

# CMAX-DM30-CPUSEV53



Cell-Max™ Low PIM Directional High Capacity Venue MIMO Antenna,  
698–960 MHz and 1710–2700 MHz, 30-Deg

## Electrical Specifications

Frequency Band, MHz	698–800	800–960	1695–1880	1850–1990	1920–2180	2200–2700	2300–2360
Gain, dBi	11.1	11.8	10.9	11.0	11.3	12.0	12.0
Beamwidth, Horizontal, degrees	34	30	34	33	31	26	28
Beamwidth, Vertical, degrees	68.0	61.0	70.0	66.0	65.0	65.0	64.0
Front-to-Back Total Power at 180° ± 30°, dB	22	22	27	27	27	27	27
CPR at Boresight, dB	20	20	17	17	17	20	20
Isolation, Cross Polarization, dB	25	25	25	25	25	25	25
VSWR   Return Loss, dB	1.5   14.0	1.5   14.0	1.5   14.0	1.5   14.0	1.5   14.0	1.5   14.0	1.5   14.0
PIM, 3rd Order, 2 x 20 W, dBc	-153	-153	-153	-153	-153	-153	-153
Input Power per Port, maximum, watts	200	200	200	200	200	200	200
Polarization	±45°	±45°	±45°	±45°	±45°	±45°	±45°
Impedance	50 ohm	50 ohm	50 ohm	50 ohm	50 ohm	50 ohm	50 ohm

## Product Classification

<b>Brand</b>	Cell-Max™
<b>Product Type</b>	Indoor/outdoor antenna

## General Specifications

<b>Antenna Type</b>	Directional
<b>Application</b>	Indoor   Outdoor
<b>Includes</b>	Mounting bracket
<b>Number of Ports, all types</b>	2
<b>Package Quantity</b>	1

## Mechanical Specifications

<b>Color</b>	White
<b>Radome Material</b>	ABS, UV resistant
<b>RF Connector Interface</b>	7-16 DIN Female
<b>Wind Loading, maximum</b>	686.0 N @ 216 km/h 154.2 lbf @ 216 km/h
<b>Wind Speed, maximum</b>	216 km/h   134 mph

# CMAX-DM30-CPUSEV53

---

## Environmental Specifications

<b>Ingress Protection Test Method</b>	IEC 60529:2001, IP65
<b>Operating Temperature</b>	-40 °C to +60 °C (-40 °F to +140 °F)
<b>Relative Humidity</b>	Up to 100%
<b>Vibration Test Method</b>	ASTM D4169   IEC 60068-2-6

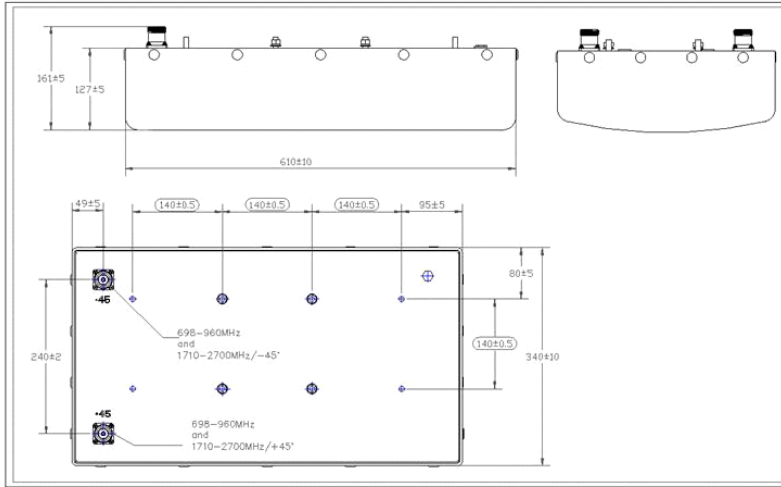
## Dimensions

<b>Depth</b>	127.0 mm   5.0 in
<b>Length</b>	609.6 mm   24.0 in
<b>Width</b>	340.4 mm   13.4 in
<b>Net Weight</b>	7.0 kg   15.4 lb

## Packed Dimensions

<b>Depth</b>	210.0 mm   8.3 in
<b>Length</b>	890.0 mm   35.0 in
<b>Width</b>	350.0 mm   13.8 in
<b>Shipping Weight</b>	12.4 kg   27.3 lb

## Outline Drawing



## Regulatory Compliance/Certifications

### Agency

RoHS 2011/65/EU

### Classification

