

CMAX-DM30-43-V53



Cell-Max™ Low PIM Directional High Capacity Venue MIMO Antenna, 698–960 MHz and 1710–2700 MHz, 30-Deg, 4.3-10

Electrical Specifications

Frequency Band, MHz	698–800	800–960	1695–1880	1850–1990	1920–2180	2200–2700	2300–2360
Gain, dBi	11.1	11.8	10.9	11.0	11.3	12.0	12.0
Beamwidth, Horizontal, degrees	34	30	34	33	31	26	28
Beamwidth, Vertical, degrees	68.0	61.0	70.0	66.0	65.0	65.0	64.0
Front-to-Back Total Power at 180° ± 30°, dB	22	22	27	27	27	27	27
CPR at Boresight, dB	20	20	17	17	17	20	20
Isolation, Cross Polarization, dB	25	25	25	25	25	25	25
VSWR Return Loss, dB	1.5 14.0	1.5 14.0	1.5 14.0	1.5 14.0	1.5 14.0	1.5 14.0	1.5 14.0
PIM, 3rd Order, 2 x 20 W, dBc	-153	-153	-153	-153	-153	-153	-153
Input Power per Port, maximum, watts	200	200	200	200	200	200	200
Polarization	±45°	±45°	±45°	±45°	±45°	±45°	±45°
Impedance	50 ohm	50 ohm	50 ohm	50 ohm	50 ohm	50 ohm	50 ohm

Product Classification

Brand	Cell-Max™
Product Type	Indoor/outdoor antenna

General Specifications

Antenna Type	Directional
Application	Indoor Outdoor
Includes	Mounting bracket
Number of Ports, all types	2
Package Quantity	1

Mechanical Specifications

Color	White
Radome Material	ABS, UV resistant
RF Connector Interface	4.3-10 Female
Wind Loading, maximum	686.0 N @ 216 km/h 154.2 lbf @ 216 km/h
Wind Speed, maximum	216 km/h 134 mph

CMAX-DM30-43-V53

Environmental Specifications

Ingress Protection Test Method	IEC 60529:2001, IP65
Operating Temperature	-40 °C to +60 °C (-40 °F to +140 °F)
Relative Humidity	Up to 100%
Vibration Test Method	ASTM D4169 IEC 60068-2-6

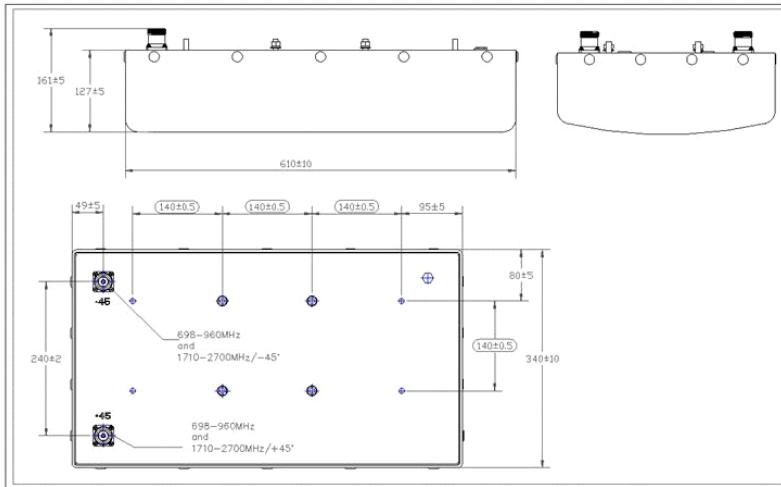
Dimensions

Depth	127.0 mm 5.0 in
Length	609.6 mm 24.0 in
Width	340.4 mm 13.4 in
Net Weight	7.0 kg 15.4 lb

Packed Dimensions

Depth	210.0 mm 8.3 in
Length	890.0 mm 35.0 in
Width	350.0 mm 13.8 in
Shipping Weight	12.4 kg 27.3 lb

Outline Drawing



Regulatory Compliance/Certifications

Agency
RoHS 2011/65/EU

Classification

