

Pressure Window for WR229, 3.3–4.9 GHz, mates to CPR229G

## Product Classification

**Product Type** Rectangular waveguide, pressure window

## Electrical Specifications

**Operating Frequency Band** 3.3 – 4.9 GHz

**VSWR** 1.01

## General Specifications

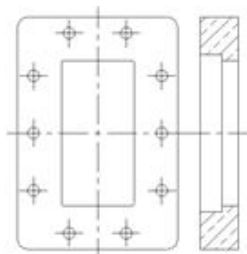
**Component** Pressure Window

**Waveguide Size** WR229 | WG11 | R40

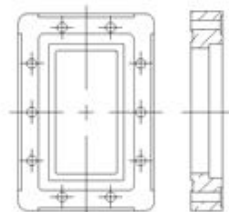
**Interface** CPR229F

**Mates to Interface** CPR229G

### Interface



### Mates to Interface



## Regulatory Compliance/Certifications

**Agency**  
ISO 9001:2015

**Classification**  
Designed, manufactured and/or distributed under this quality management system

