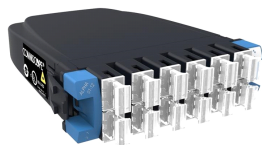


G2 Singlemode Standard Module, 12 SC fibers (6 duplex ports)



Product Classification

Portfolio	CommScope®
Product Type	Fiber module
Regional Availability	Asia Australia/New Zealand EMEA Latin America North America

Construction Materials

Fiber Type	G.652.D and G.657.A1 , TeraSPEED® OS2
Total Fibers, quantity	12

Dimensions

Depth	116.84 mm 4.60 in
Height	30.48 mm 1.20 in
Width	91.44 mm 3.60 in

Environmental Specifications

Safety Standard	UL
------------------------	----

General Specifications

Interface, front	SC
Total Ports, quantity, front	12
Interface Feature, front	Standard
Color, front	Blue
Adapters, quantity, front	6
Data Module Type	Standard
Shuttered	Yes
Interface, rear	MPO Pinned
Adapters, quantity, rear	1
Interface Feature, rear	Reduced footprint
Color, rear	Gray
Package Quantity	1

Optical Performance

Insertion Loss, maximum 1.05 dB

Regulatory Compliance/Certifications

Agency

RoHS 2011/65/EU

ISO 9001:2015

Classification

Compliant

Designed, manufactured and/or distributed under this quality management system

