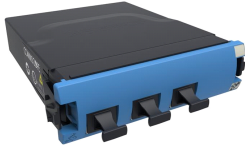


## G2 2x3 Singlemode Conversion Module, 3 MPO male ports



### Product Classification

<b>Portfolio</b>	CommScope®
<b>Product Type</b>	Fiber module
<b>Regional Availability</b>	Asia   Australia/New Zealand   EMEA   Latin America   North America

### Construction Materials

<b>Fiber Type</b>	G.652.D and G.657.A1 , TeraSPEED®   OS2
<b>Total Fibers, quantity</b>	24

### Dimensions

<b>Depth</b>	109.22 mm   4.30 in
<b>Height</b>	27.94 mm   1.10 in
<b>Width</b>	91.44 mm   3.60 in

### Environmental Specifications

<b>Safety Standard</b>	UL
------------------------	----

### General Specifications

<b>Interface, front</b>	MPO Male
<b>Total Ports, quantity, front</b>	3
<b>Interface Feature, front</b>	Standard
<b>Color, front</b>	Blue
<b>Adapters, quantity, front</b>	3
<b>Color, housing</b>	Black
<b>Data Module Type</b>	Standard
<b>Shuttered</b>	No
<b>Interface, rear</b>	MPO Male
<b>Adapters, quantity, rear</b>	2
<b>Interface Feature, rear</b>	Reduced footprint
<b>Color, rear</b>	Blue
<b>Package Quantity</b>	1

## Optical Performance

**Insertion Loss, maximum** 1.34 dB

## Regulatory Compliance/Certifications

**Agency**

RoHS 2011/65/EU

ISO 9001:2015

**Classification**

Designed, manufactured and/or distributed under this quality management system

