

InstaPATCH® Cu GigaSPEED X10D® U/UTP Plenum Preterminated Copper Cable, single row standard density outlet to dual row standard density RJ45 plug, 24 links

Product Classification

Portfolio	SYSTIMAX®
Brand	GigaSPEED X10D® InstaPATCH® Cu
Product Type	Copper trunk cable assembly
Regional Availability	Asia Australia/New Zealand EMEA Latin America North America

Dimensions

Cord Length, minimum	2 m 7 ft
Cord Length, maximum	30 m 98 ft

Electrical Specifications

ANSI/TIA Category	6A
dc Resistance, maximum	0.30 ohm
Safety Voltage Rating	300 V

Environmental Specifications

Environmental Space	Plenum
Flammability Rating	UL 94 V-0
Operating Temperature	-10 °C to +60 °C (+14 °F to +140 °F)

General Specifications

Cable Type	U/UTP (unshielded)
Interface, connector A	Information outlet
Interface, connector B	RJ45 plug
Interface Feature, connector A	Single row Standard density
Interface Feature, connector B	Dual row Standard density

Mechanical Specifications

Link Count	24
Conductor Type	Solid
Wiring	T568B

Regulatory Compliance/Certifications

Agency	Classification
RoHS 2011/65/EU	Compliant

ISO 9001:2015

Designed, manufactured and/or distributed under this quality management system



Included Products

2095B 4/24 (Product Component—not orderable) — GigaSPEED X10D® 2095B Category 6A U/UTP Cable, plenum, 4 pair count

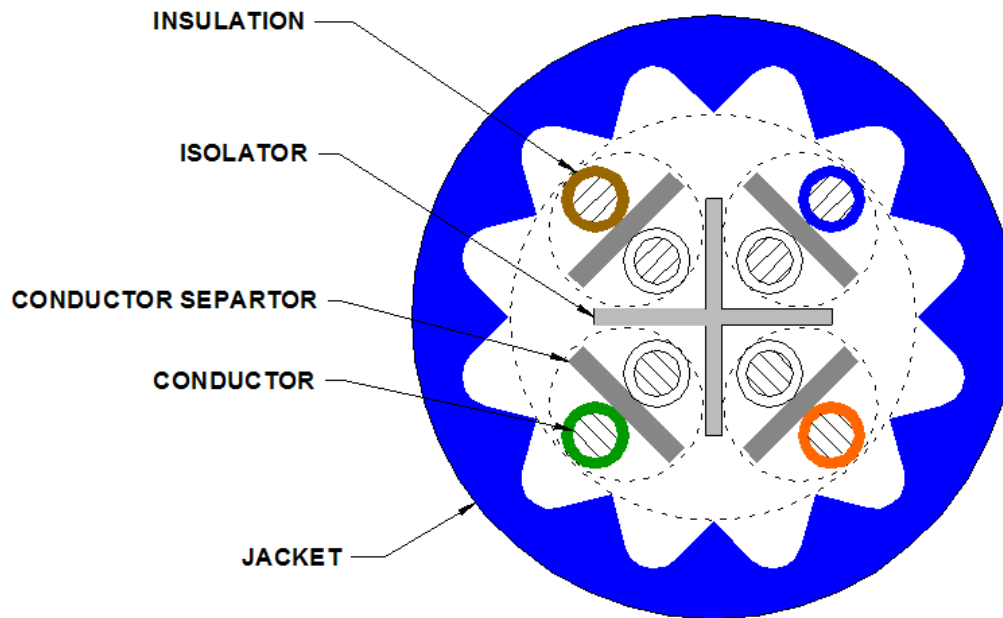
MGS600 (Product Component—not orderable) — GigaSPEED X10D® MGS600 Series Information Outlet

GigaSPEED X10D® 2095B Category 6A U/UTP Cable, plenum, 4 pair count

Product Classification

Portfolio	SYSTIMAX®
Brand	GigaSPEED X10D®
Product Type	Twisted pair cable
Regional Availability	Asia Australia/New Zealand EMEA Latin America North America

Cross Section Drawing



Construction Materials

Jacket Material	PVC
Conductor Material	Bare copper
Insulation Material	FEP
Separator Material	FEP
Separator 2 Material	Polyolefin

Dimensions

Cable Weight	41.58 lb/kft
Diameter Over Jacket, nominal	7.239 mm 0.285 in

Jacket Thickness 1.524 mm | 0.060 in

Electrical Specifications

ANSI/TIA Category 6A
Characteristic Impedance 100 ohm
Characteristic Impedance Tolerance ±15 ohm
dc Resistance Unbalance, maximum 4 %
dc Resistance, maximum 9.38 ohms/100 m
Mutual Capacitance 6.0 nF/100 m @ 1 kHz
Nominal Velocity of Propagation (NVP) 67 %
Operating Frequency, maximum 550 MHz
Operating Voltage, maximum 80 V
Transmission Standards ANSI/TIA-568-C.2
Safety Voltage Rating 300 V
Dielectric Strength, minimum 1500 Vac | 2500 Vdc

Environmental Specifications

Environmental Space Plenum
Flame Test Method CMP
Installation Temperature 0 °C to +60 °C (+32 °F to +140 °F)
Operating Temperature -20 °C to +60 °C (-4 °F to +140 °F)

General Specifications

Cable Type U/UTP (unshielded)
Pairs, quantity 4
Cable Component Type Cordage
Product Number 2095B
Conductor Gauge, singles 24 AWG
Conductor Type, singles Solid
Conductors, quantity 8
Separator Type Isolator

Mechanical Specifications

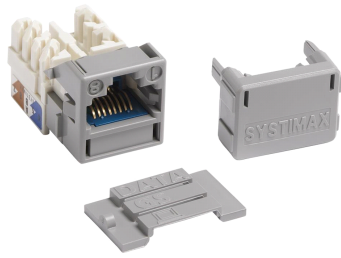
Pulling Tension, maximum 11 kg | 25 lb

Regulatory Compliance/Certifications

Agency	Classification
RoHS 2011/65/EU	Compliant
ISO 9001:2015	Designed, manufactured and/or distributed under this quality management system



MGS600



GigaSPEED X10D® MGS600 Series Information Outlet

Product Classification

Portfolio	SYSTEMAX®
Brand	GigaSPEED X10D®
Product Type	Modular jack
Regional Availability	Asia Australia/New Zealand EMEA Latin America North America

Dimensions

Depth	30.48 mm 1.20 in
Height	20.32 mm 0.80 in
Width	20.32 mm 0.80 in

Electrical Specifications

ANSI/TIA Category	6A
Contact Resistance Variation, maximum	20 mOhm
Contact Resistance, maximum	100 mOhm
Current Rating	1.5 A @ 20 °C 1.5 A @ 68 °F
Dielectric Withstand Voltage, RMS, conductive surface	1500 Vac @ 60 Hz
Dielectric Withstand Voltage, RMS, contact-to-contact	1000 Vac @ 60 Hz
Insulation Resistance, minimum	500 MOhm

Environmental Specifications

Flammability Rating	UL 94 V-0
Operating Temperature	-10 °C to +60 °C (+14 °F to +140 °F)
Relative Humidity	Up to 95%, non-condensing
Safety Standard	cUL UL
Storage Temperature	-40 °C to +70 °C (-40 °F to +158 °F)

General Specifications

Cable Type	Unshielded
Package Quantity	1

Mechanical Specifications

Conductor Gauge, solid	22 AWG 24 AWG
Conductor Gauge, stranded	22 AWG 24 AWG
Conductor Type	Solid Stranded
Contact Plating Material	Precious metals
Material Type	Copper alloy High-impact, flame retardant, thermoplastic
Plug Insertion Life, minimum	750 times
Plug Insertion Life, test plug	IEC 60603-7 compliant plug
Plug Retention Force, minimum	30 lbf 133 N
Termination Contact Plating	Nickel
Termination Type	IDC
Wiring	T568A T568B

Regulatory Compliance/Certifications

Agency	Classification
RoHS 2011/65/EU	Compliant
ISO 9001:2015	Designed, manufactured and/or distributed under this quality management system

