

Pressure Window for WR28, 26.5–40.1 GHz, mates to PBR320

## Product Classification

**Product Type** Rectangular waveguide, pressure window

## Electrical Specifications

**Operating Frequency Band** 26.5 – 40.1 GHz

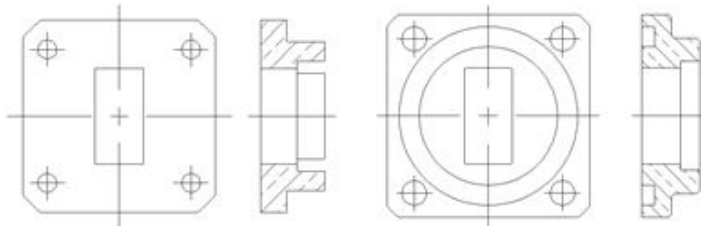
**VSWR** 1.04

## General Specifications

**Component** Pressure Window  
**Waveguide Size** WR28 | WG22 | R320  
**Interface** UBR320  
**Mates to Interface** PBR320

### Interface

### Mates to Interface



## Regulatory Compliance/Certifications

**Agency** ISO 9001:2015  
**Classification** Designed, manufactured and/or distributed under this quality management system

