

Pressure Window for WR90, 8.2–12.4 GHz, mates to PDR100

## Product Classification

**Product Type** Rectangular waveguide, pressure window

## Electrical Specifications

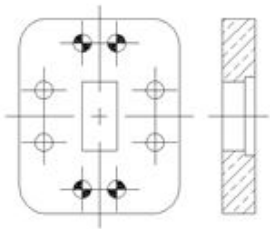
**Operating Frequency Band** 8.2 – 12.4 GHz

**VSWR** 1.04

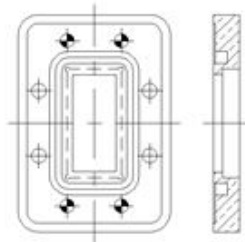
## General Specifications

**Component** Pressure Window  
**Waveguide Size** WR90 | WG16 | R100  
**Interface** UDR100  
**Mates to Interface** PDR100

### Interface



### Mates to Interface



## Regulatory Compliance/Certifications

**Agency** ISO 9001:2015  
**Classification** Designed, manufactured and/or distributed under this quality management system

