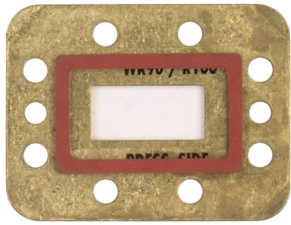


55000A-75



Pressure Window for WR75, 10.0–15.0 GHz, mates to WR75 Choke

Product Classification

Product Type Rectangular waveguide, pressure window

Electrical Specifications

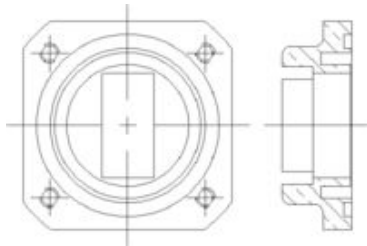
Operating Frequency Band 10.0 – 15.0 GHz

VSWR 1.04

General Specifications

Component Pressure Window
Waveguide Size WR75 | WG17 | R120
Interface WR75 Cover
Mates to Interface WR75 Choke

Mates to Interface



Regulatory Compliance/Certifications

Agency ISO 9001:2015
Classification Designed, manufactured and/or distributed under this quality management system

