

Pressure Window for WR159, 4.9–7.05 GHz, mates to CPR159G

## Product Classification

**Product Type** Rectangular waveguide, pressure window

## Electrical Specifications

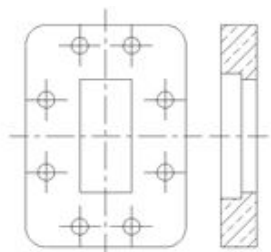
**Operating Frequency Band** 4.9 – 7.05 GHz

**VSWR** 1.01

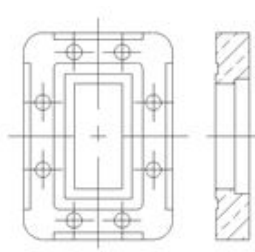
## General Specifications

**Component** Pressure Window  
**Waveguide Size** WR159 | WG13 | R58  
**Interface** CPR159F  
**Mates to Interface** CPR159G

### Interface



### Mates to Interface



## Regulatory Compliance/Certifications

**Agency** ISO 9001:2015  
**Classification** Designed, manufactured and/or distributed under this quality management system

