

Pressure Window for WR187, 3.95–5.85 GHz, mates to CPR187G

Product Classification

Product Type Rectangular waveguide, pressure window

Electrical Specifications

Operating Frequency Band 3.95 – 5.85 GHz

VSWR 1.01

General Specifications

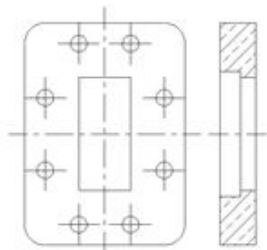
Component Pressure Window

Waveguide Size WR187 | WG12 | R48

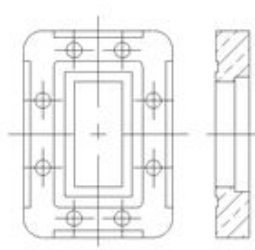
Interface CPR187F

Mates to Interface CPR187G

Interface



Mates to Interface



Regulatory Compliance/Certifications

Agency

ISO 9001:2015

Classification

Designed, manufactured and/or distributed under this quality management system

