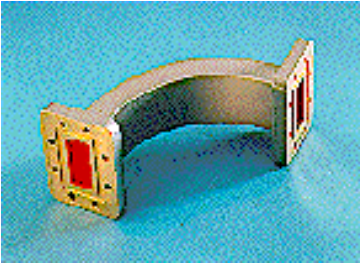


# E112MC102C102SG



90° E Plane Swept Bend for WR112, 7.05–10.0 GHz, with interface types CPR112G and CPR112G, 102 mm x 102 mm, gray

## Product Classification

**Product Type** Rectangular waveguide, swept bend

## Electrical Specifications

**Operating Frequency Band** 7.05 – 10.0 GHz

**VSWR** 1.05

## General Specifications

**Component** 90° E Plane Swept Bend

**Waveguide Size** WR112 | WG15 | R84

**Finish** Gray

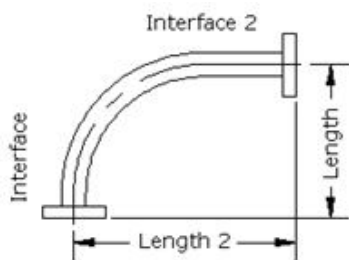
**Interface** CPR112G

**Interface 2** CPR112G

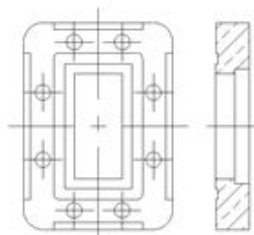
**Length** 102 mm | 4 in

**Length 2** 102 mm | 4 in

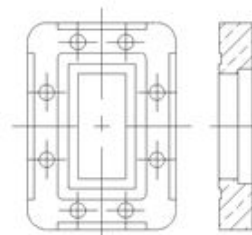
### Component



### Interface



### Interface 2



## Regulatory Compliance/Certifications

### Agency

ISO 9001:2015

### Classification

Designed, manufactured and/or distributed under this quality management system

