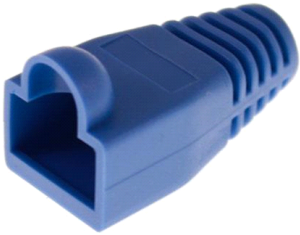


Modular Plug Boot, for category 5E and 6/6A EMT plugs, 6.5 mm max cable OD, 2400 per box, blue



## **OBSOLETE**

This product was discontinued on: July 1, 2017

### **Replaced By**

2843033-3  
MP-Boot-S/SL-C

Modular Plug Shielded Slim-Line Boot for Category 6A/6 and Category 5e EMT Plugs, 5.7 to 7.0 mm, transparent

## Product Classification

<b>Portfolio</b>	NETCONNECT®
<b>Product Type</b>	Modular plug boot
<b>Regional Availability</b>	Asia   Australia/New Zealand   EMEA   Latin America   North America

## Dimensions

**Compatible Cable Diameter, maximum** 6.50 mm | 0.26 in

**Compatible Cable Diameter, minimum** 6.00 mm | 0.24 in

## General Specifications

<b>Color</b>	Blue
<b>Boot Feature</b>	Snagless
<b>Compatible Plug Type</b>	Cat 6
<b>Package Quantity</b>	2400
<b>Packaging Type</b>	Bag   Box