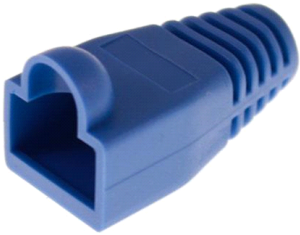


Modular Plug Boot, for category 5E and 6/6A EMT plugs, 5.5 mm max cable OD, 2400 per box, blue



OBSOLETE

This product was discontinued on: July 1, 2017

Replaced By

2843032-3 MP-Boot-S/SL-AB	Modular Plug Shielded Slim-Line Boot for Category 6A/6 and Category 5e EMT Plugs, 4.7 to 6.0 mm, transparent
------------------------------	--------------------------------------------------------------------------------------------------------------

Product Classification

Portfolio	NETCONNECT®
Product Type	Modular plug boot
Regional Availability	Asia Australia/New Zealand EMEA Latin America North America

Dimensions

Compatible Cable Diameter, maximum 5.50 mm | 0.22 in

Compatible Cable Diameter, minimum 4.70 mm | 0.19 in

General Specifications

Color	Blue
Boot Feature	Snagless
Compatible Plug Type	Cat 6
Package Quantity	2400
Packaging Type	Bag Box