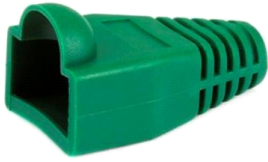


Modular Plug Boot, for category 5E and 6/6A EMT plugs, 5.5 mm max cable OD, 2400 per box, green



## **OBSOLETE**

**This product was discontinued on: July 1, 2017**

### **Replaced By**

2843032-3                      Modular Plug Shielded Slim-Line Boot for Category 6A/6 and Category 5e EMT Plugs, 4.7 to 6.0 mm, transparent  
MP-Boot-S/SL-AB

## Product Classification

<b>Portfolio</b>	NETCONNECT®
<b>Product Type</b>	Modular plug boot
<b>Regional Availability</b>	Asia   Australia/New Zealand   EMEA   Latin America   North America

## Dimensions

**Compatible Cable Diameter, maximum** 5.50 mm | 0.22 in

**Compatible Cable Diameter, minimum** 4.70 mm | 0.19 in

## General Specifications

<b>Color</b>	Green
<b>Boot Feature</b>	Snagless
<b>Compatible Plug Type</b>	Cat 6
<b>Package Quantity</b>	2400
<b>Packaging Type</b>	Bag   Box