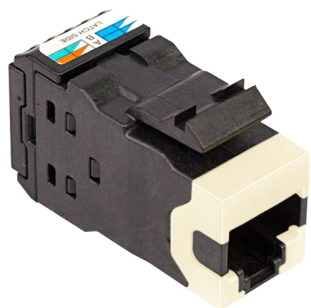


JACK, AMP-TWIST, UTP, C6A, L. ALMOND



This product will be discontinued on: June 30, 2019

Replaced By

760241184
SL10G-L.ALD

NETCONNECT SL 110 Series Modular Jack, RJ45, category 6A, T568A/T568B, unshielded, no dust cover, light almond

Product Classification

Portfolio	NETCONNECT®
Product Series	SL Series
Product Type	Modular jack
Regional Availability	Asia Australia/New Zealand EMEA Latin America

Dimensions

Compatible Cable Diameter, maximum	9.00 mm 0.35 in
Compatible Insulated Conductor Diameter, maximum	1.600 mm 0.063 in
Depth	39.03 mm 1.54 in
Height	21.50 mm 0.85 in
Width	15.25 mm 0.60 in

Electrical Specifications

Safety Voltage Rating	150 Vac
Transmission Standard	ANSI/TIA-568-C.2 ISO/IEC 11801 Class EA

Environmental Specifications

Flammability Rating	UL 94 V-0
Operating Temperature	-40 °C to +70 °C (-40 °F to +158 °F)
Safety Standard	cUL

General Specifications

Cable Type	Unshielded
Color	Almond
Includes	Strain relief cap
Mount Type	SL Series faceplates and panels
Package Quantity	24
Panel Cutout, recommended	14.78 x 20.32 mm (0.58 x 0.80 in)
Panel Thickness, recommended	1.60 mm

Mechanical Specifications

Conductor Gauge, solid	24–22 AWG
Conductor Gauge, stranded	24 AWG
Conductor Type	Solid Stranded
Contact Base Material	Beryllium copper
Contact Plating Material	Gold
Contact Plating Thickness	1.27 µm
Material Type	Polycarbonate
Outlet Feature	Inverted jack face
Outlet Type	Standard
Plug Insertion Life, minimum	750 times
Termination Tool	SL Termination tool
Termination Type	IDC
Wiring	T568A T568B

Regulatory Compliance/Certifications

Agency
RoHS 2011/65/EU

Classification

