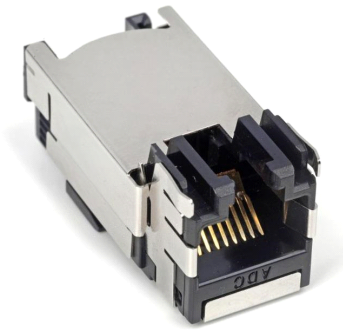


RJ45 Modular Jack Q-Series, category 6A, shielded, 8-position



Product Classification

Portfolio	NETCONNECT®
Product Series	Q Series
Product Type	Modular jack
Regional Availability	Asia Australia/New Zealand EMEA Latin America North America

Electrical Specifications

Transmission Standard	ANSI/TIA-568-C.2 ISO/IEC 11801 Class EA
------------------------------	---

Environmental Specifications

Flammability Rating	UL 94 V-0
----------------------------	-----------

General Specifications

Cable Type	Shielded
Color	Black
Package Quantity	12
Packaging Type	Tray in box
Panel Thickness, recommended	1.60 mm

Mechanical Specifications

Conductor Type	Solid Stranded
Contact Base Material	Beryllium copper
Contact Plating Material	Gold
Contact Plating Thickness	1.27 µm
Material Type	Polycarbonate
Outlet Type	Standard
Termination Type	IDC
Wiring	T568A T568B

Regulatory Compliance/Certifications

Agency

RoHS 2011/65/EU

Classification

Compliant

