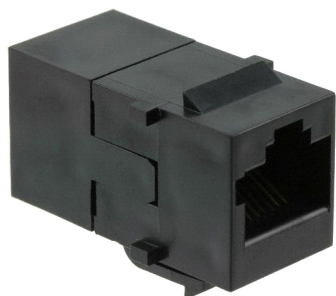


RJ45 Coupler Assembly, category 3, 8-position, in-line, keyed, black



## Product Classification

<b>Portfolio</b>	NETCONNECT®
<b>Product Type</b>	Modular jack coupler
<b>Regional Availability</b>	Asia   Latin America   North America

## Dimensions

<b>Depth</b>	30.73 mm   1.21 in
<b>Height</b>	19.05 mm   0.75 in
<b>Width</b>	14.48 mm   0.57 in

## Electrical Specifications

<b>ANSI/TIA Category</b>	3
<b>Transmission Standard</b>	ANSI/TIA-568-C.2   ISO/IEC 11801 Class C

## Environmental Specifications

<b>Flammability Rating</b>	UL 94 V-0
----------------------------	-----------

## General Specifications

<b>Cable Type</b>	Unshielded
<b>Color</b>	Black
<b>Package Quantity</b>	1
<b>Panel Cutout, recommended</b>	14.86 x 19.30 mm (0.59 x 0.76 in)
<b>Panel Thickness, recommended</b>	1.60 mm

## Mechanical Specifications

<b>Conductor Type</b>	Solid   Stranded
<b>Contact Base Material</b>	Phosphor bronze
<b>Contact Plating Material</b>	Gold
<b>Contact Plating Thickness</b>	1.27 µm

# 555376-1

---

<b>Material Type</b>	Polycarbonate
<b>Outlet Feature</b>	Keyed
<b>Outlet Type</b>	Inline
<b>Termination Type</b>	IDC
<b>Wiring</b>	T568A   T568B

## Regulatory Compliance/Certifications

**Agency**  
RoHS 2011/65/EU

**Classification**  
Compliant

