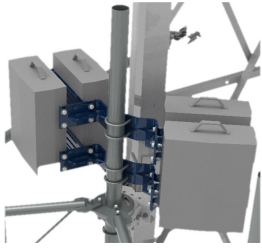


# RR-APEX4-A

---



Apex RRU Mount with "860677769-001" Interface plates for up to 4 Radios - Mounts to 3-1/2" OD Extended Spine on G2RHDX Series Mounts

Designed for G2 RHDH Series Mounts with Extended Spine

- Increased versatility and stability
- More RRU mounting available, reducing need for additional mounts
- Better load management and Less structure stress
- Angled RRU brackets for stronger, more versatile mounting
- Decreased PIM from radio relocation (pulls radio from near field)
- Decreased antenna pipe loading
- Compatible with towers and monopoles

Supports all typical RRH units from Ericsson, Nokia, Samsung, Huawei, Fujitsu

RR-APEX4-A includes (4) universal adapter plates "860677769-001" for Ericsson ERS radios such as 8843, 4449, 4890, 4490, 8863

## Product Classification

<b>Portfolio</b>	CommScope®
<b>Product Type</b>	Remote radio head unit mount
<b>Ordering Note</b>	CommScope® standard product with terms
<b>Warranty</b>	One year

## General Specifications

<b>Mounting</b>	Pipe, 88.9 mm (3-1/2 in) OD
-----------------	-----------------------------

## Dimensions

<b>Height</b>	381 mm   15 in
<b>Length</b>	1,320.8 mm   52 in
<b>Compatible Diameter</b>	88.9 mm   3.5 in
<b>Mounting Diameter, maximum</b>	88.9 mm   3.5 in
<b>Mounting Diameter, minimum</b>	88.9 mm   3.5 in

## Material Specifications

<b>Material Type</b>	Hot dip galvanized steel
----------------------	--------------------------

# RR-APEX4-A

---

## Mechanical Specifications

**Wind Rating** For Specifications, please contact [steelproducts@commscope.com](mailto:steelproducts@commscope.com) or call 800-255-1479

## Packaging and Weights

**Included** Clamps | Hardware

**Packaging quantity** 2

**Weight, net** 52.617 kg | 116 lb

## \* Footnotes

**Warranty** For more information, please consult our Product Warranty guidelines

**Wind Rating** BWS—Base Wind Speed; FBC—Florida Building Code