

4

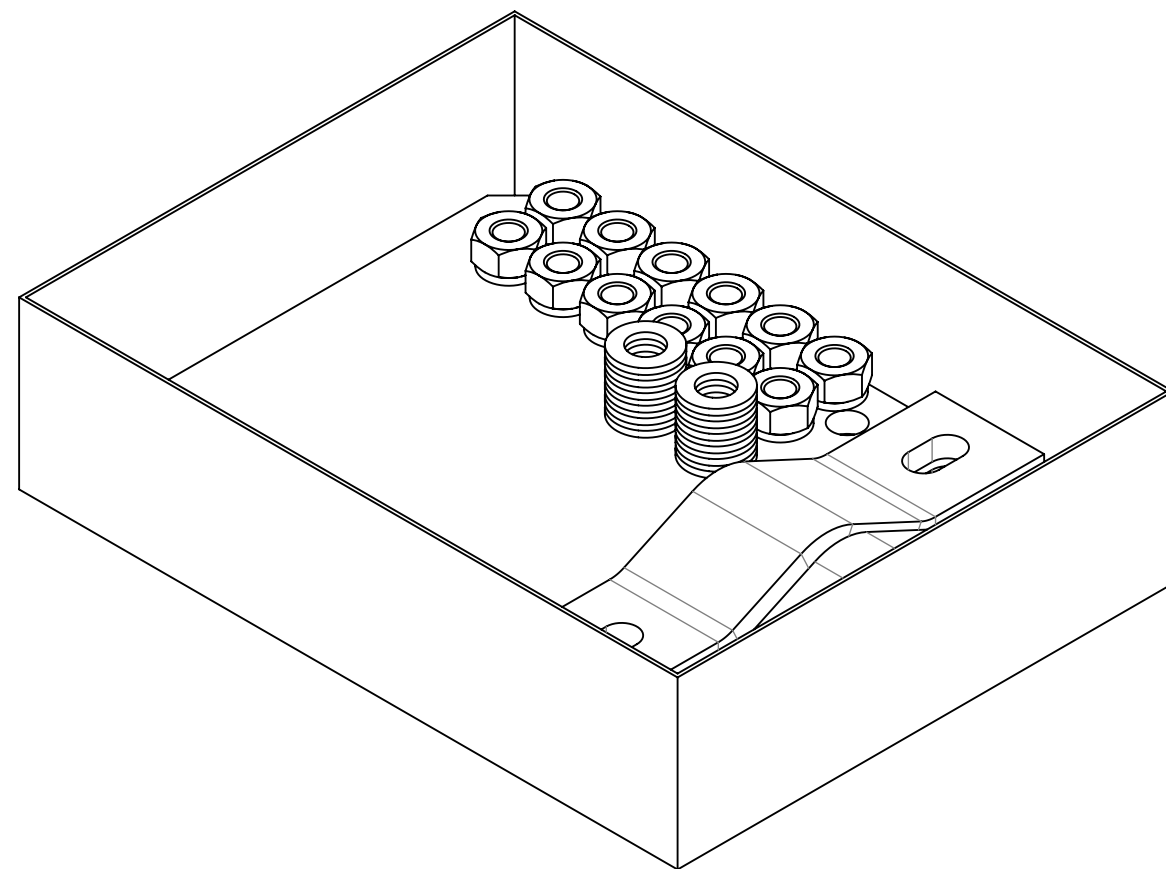
3

2

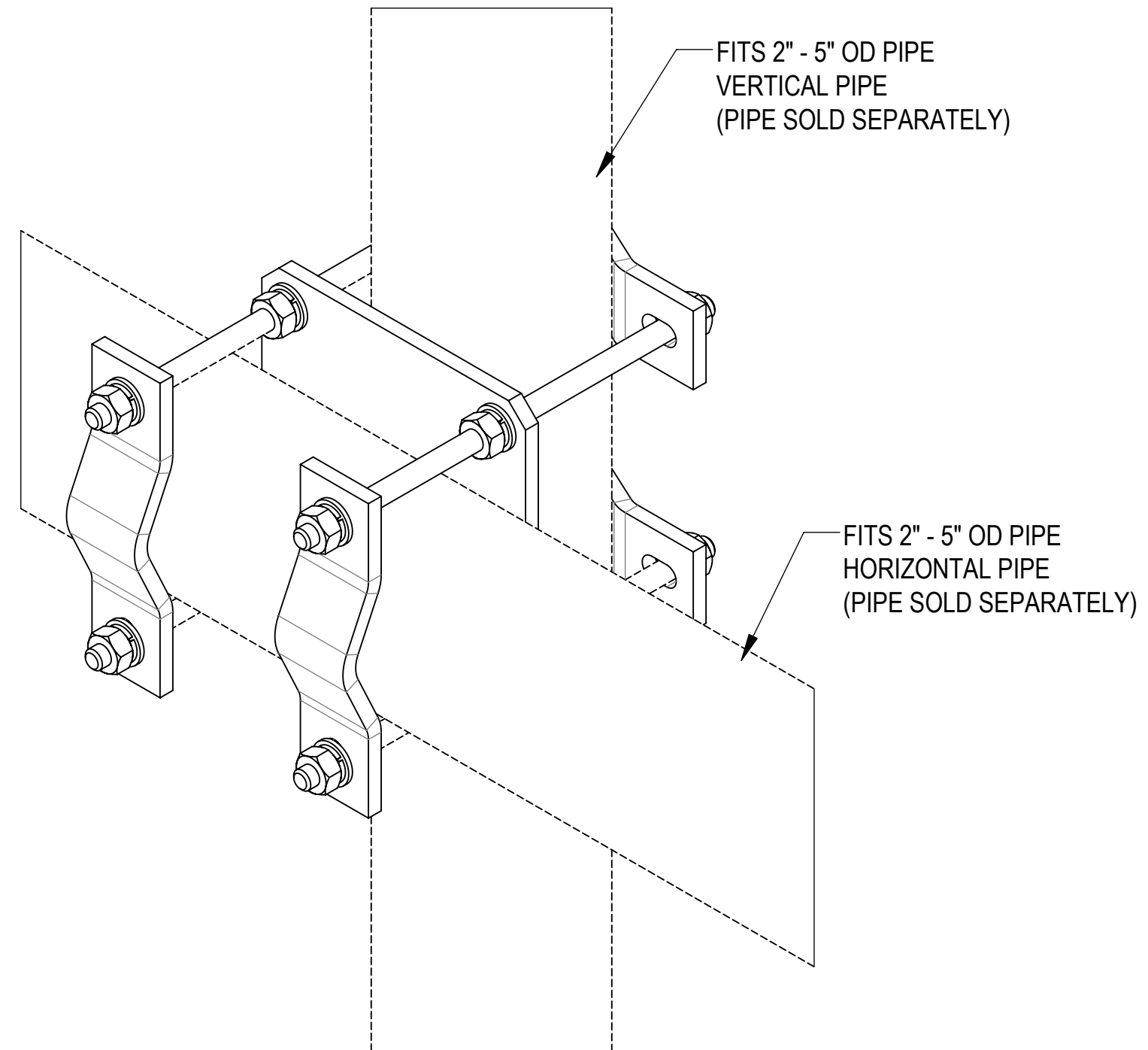
1

- 1.0 GENERAL NOTES
 - 1.1 ALL METRIC DIMENSIONS ARE IN BRACKETS [X. X]
 - 1.2 FOR PATENT INFO: <https://www.cs-pat.com>
- 2.0 DESIGN NOTES
- 3.0 MANUFACTURING/SPECIAL REQUIREMENTS
 - 3.1 TIGHTEN ALL BOLTS SECURING FLAT PLATES BY THE TURN-OF-NUT METHOD. TIGHTEN ALL U-BOLTS USING TURN-OF-NUT METHOD WITH ATTENTION TO LEAVE EQUAL DISTANCE AND EQUAL FORCE ON EACH LEG OF THE U-BOLT.
- 4.0 TEST
- 5.0 PACKAGING
 - 5.1 PACKAGING SHALL MEET COMMSCOPE REQUIREMENTS PER DOCUMENT IS-PL-3005
 - 5.2 PRINTED DOCUMENT TO BE PLACED INSIDE POLYBAG AND THEN IN SHIPPING CONTAINER
 - 5.3 EXTRA HARDWARE MAY BE SUPPLIED, BAGGED AND SHIPPED


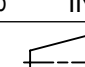
| REVISIONS | | | |
|-----------|-----------------|-------------------|-----------------------|
| REV. | DESCRIPTION | DATE | APPROVED |
| A | INITIAL RELEASE | YX1027 21MAY24 | XK1001 40196046CMO |



PACKAGE VIEW



WITH PIPES VIEW

| | | | | | | | | | | |
|---|-------------|--------|------------------------------|--|---------------------|----------|---------|--------|----------|--------|
| COMMSCOPE, INC. OF NORTH CAROLINA | | | | | | | | | | |
| TOLERANCES | | | | | SAP MATERIAL MASTER | | | | | |
| 1 PLACE .X[X] ± 0.2[6.3] | | | 3 PLACE .XXX[X] ± 0.060[1.5] | | CO-200-LD | | | | | |
| 2 PLACE .XX[X] ± 0.12[3.0] | | | ANGLES ± 2° | | | | | | | |
| FINISH | | | | | MATERIAL | | | | | |
| CROSSOVER PLATE KIT, 2" - 5" PIPE, LD | | | | | | | | | | |
| UNLESS OTHERWISE SPECIFIED DIMENSIONS ARE IN INCHES INTERPRET PER ANSI Y 14.5M-1994 | | NAME | DATE | TITLE | | | | | | |
| CE | YX1027 | YMENG | 05/21/2024 | SCALE: 1:2 DOCUMENT NO.: CO-200-LD | | | | | | |
| RW | YMENG | YMENG | 05/21/2024 | | | | | | | |
| AD | XK1001 | YMENG | 05/21/2024 | | | | | | | |
| RE | YMENG | YMENG | 05/22/2024 | | | | | | | |
| ECN | 40196046CMO | | | | | | | | | |
| DENSITY | | 16.77 | lbs/in ³ | SIZE: C   | | | | | | |
| MASS | | 73.82 | lbs | | | | | | | |
| VOLUME | | 921.22 | in ³ | | | | | | | |
| SURFACE AREA | | 12.00" | in ² | MODEL | | DRAWING | | | | |
| HEIGHT | | 8.13" | in | VERSION | STATUS | REVISION | VERSION | STATUS | REVISION | SHEET |
| LENGTH | | 8.13" | in | 00 | RE | A | 00 | RE | A | 1 OF 2 |
| WIDTH | | 8.13" | in | | | | | | | |

4

3

2

1

4

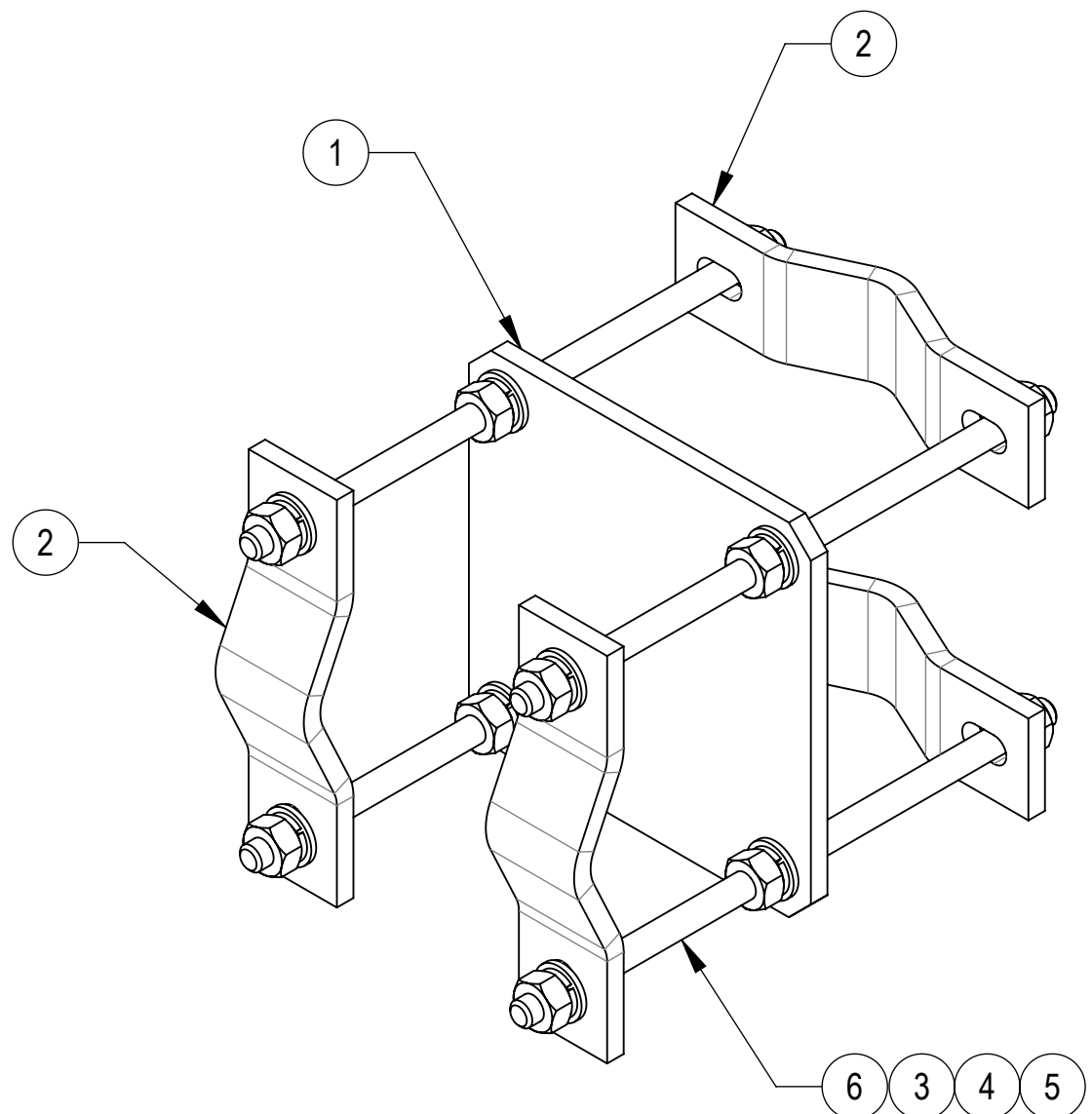
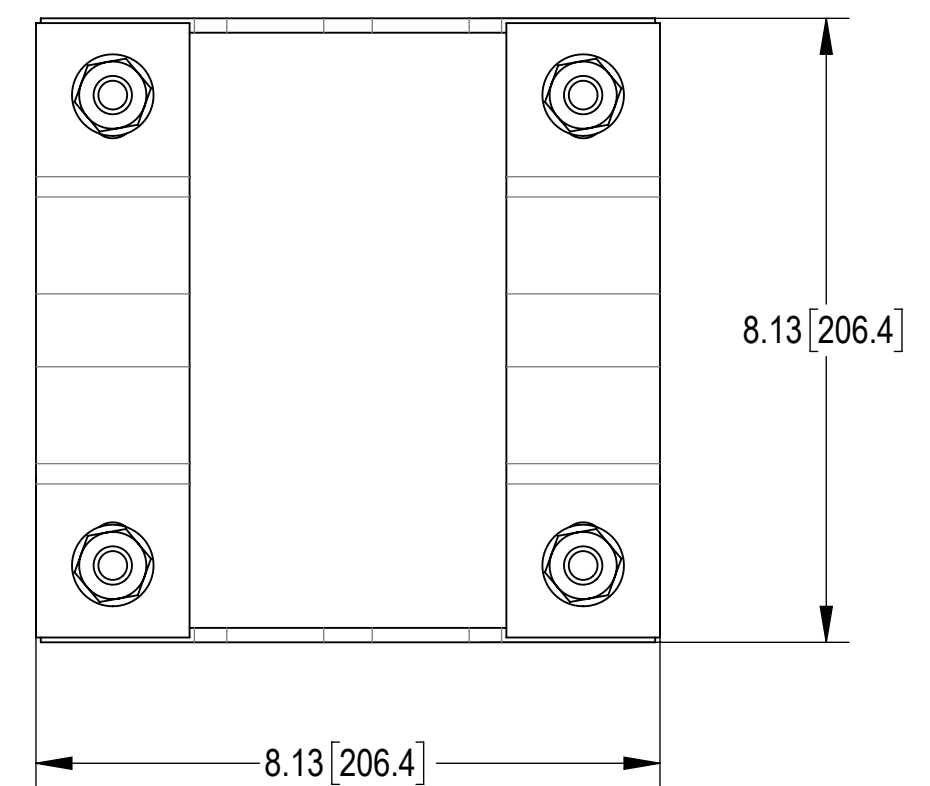
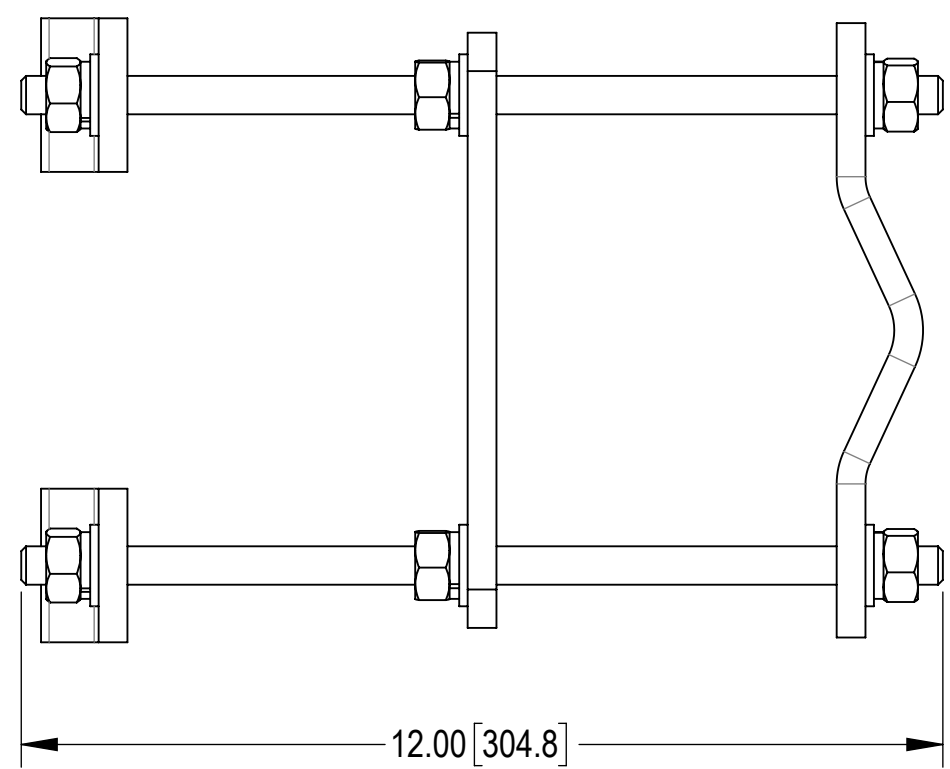
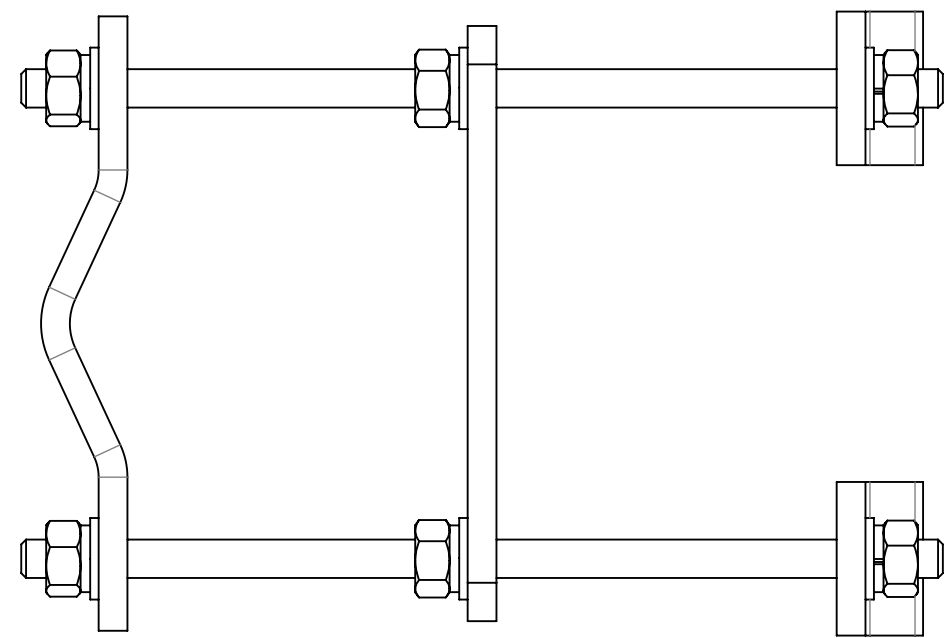
3

2

1

D

D



COMPONENT PART NUMBERS PROVIDED FOR ASSEMBLY PURPOSES;
INDIVIDUAL COMPONENTS MAY BE SHIPPED AS PARTS WITHIN AN INCLUDED KIT.

| ITEM NO. | PART NUMBER | DESCRIPTION | QTY. | WEIGHT | NOTE NO. |
|----------|-----------------|---|------|----------|----------|
| 1 | CO200LD-1000-00 | CROSSOVER PLATE 7.75"X 7.75",9/16"HOLE | 1 | 6.24 LBS | |
| 2 | DCP11-00 | CLAMP HALF:3/8", 9/16" HOLE,2" TO 5" OD | 4 | 1.65 LBS | |
| 3 | GWF04A | 1/2" GALV FLAT WASHER (A325) | 12 | 0.02 LBS | |
| 4 | GWL-04 | 1/2" GALV LOCK WASHER | 12 | 0.01 LBS | |
| 5 | GN-04A | 1/2" GALV HEX NUT (A194 2H) | 12 | 0.07 LBS | |
| 6 | MT-379 | 1/2" X 12" GALV THREADED ROD | 4 | 0.66 LBS | |

| | | | | | |
|---|---------------------|----------------------------------|--------------|---------------|-----------------|
| COMMSCOPE, INC. OF NORTH CAROLINA | | | | | |
| TITLE CROSSOVER PLATE KIT, 2" - 5" PIPE,LD | | | | | |
| SIZE C | SCALE 1:4 | DOCUMENT NO. CO-200-LD | | | |
| | | DRAWING | | | SHEET 2 OF 2 |
| | | VERSION 00 | STATUS RE | REVISION A | |

© 2024 CommScope, Inc. Confidential

4

3

2

1

A

A