

4

3

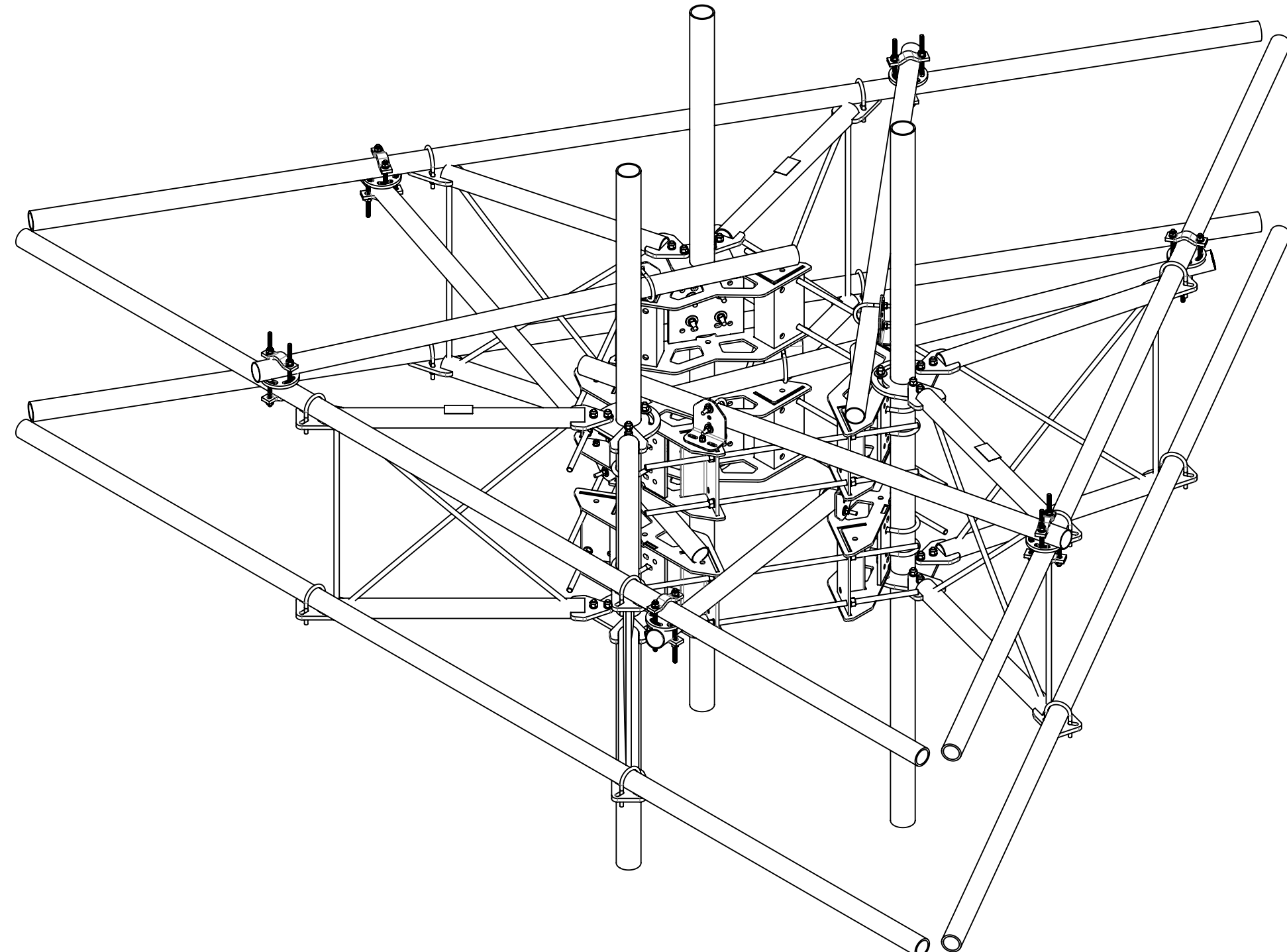
2

1

- 1.0 GENERAL NOTES
  - 1.1 ALL METRIC DIMENSIONS ARE IN BRACKETS [X. X]
  - 1.2 FOR PATENT INFO: <https://www.cs-pat.com>

- 2.0 DESIGN NOTES
  - 2.1 ANY HAZARDS OR OBSTRUCTIONS TO THE CLIMBING FACILITY AND SAFETY CLIMB MUST BE IDENTIFIED PRIOR TO INSTALLING THE APPURTENANCE. ADDITIONAL PRODUCTS MAY BE REQUIRED TO MAINTAIN THE INTEGRITY OF THE SAFETY CLIMB. DURING INSTALLATION, TEMPORARY AND/OR PERMANENT PRECAUTIONARY MEASURES SHOULD BE TAKEN TO PRESERVE THE CLIMBING FACILITY AND/OR SAFETY CLIMB.
  - 2.2 FITS MONOPOLES 30" TO 50" OD.
- 3.0 MANUFACTURING/SPECIAL REQUIREMENTS
  - 3.1 TIGHTEN ALL BOLTS SECURING FLAT PLATES BY THE TURN-OF-NUT METHOD. TIGHTEN ALL U-BOLTS USING TURN-OF-NUT METHOD WITH ATTENTION TO LEAVE EQUAL DISTANCE AND EQUAL FORCE ON EACH LEG OF THE U-BOLT.
- 4.0 TEST
- 5.0 PACKAGING
  - 5.1 PACKAGING SHALL MEET COMMSCOPE REQUIREMENTS PER DOCUMENT IS-PL-3005.
  - 5.2 PRINTED DOCUMENT TO BE PLACED INSIDE POLYBAG AND THEN IN SHIPPING CONTAINER.
  - 5.3 EXTRA HARDWARE MAY BE SUPPLIED, BAGGED AND SHIPPED.

REVISIONS			
REV.	DESCRIPTION	DATE	APPROVED
A	INITIAL RELEASE	JL1183 07MAY24	CB1094 40194988CMO



<b>COMMSCOPE, INC. OF NORTH CAROLINA</b>										
TOLERANCES					SAP MATERIAL MASTER					
0 PLACE X[X] ± 0.25[6.3]		2 PLACE .XX[X] ± 0.06[1.5]			<b>MCG23RHDX-15MB</b>					
1 PLACE X[X] ± 0.12[3.0]		ANGLES ± 2°								
FINISH					MATERIAL					
					<b>MP,SF,15'FP,NOAP</b>					
UNLESS OTHERWISE SPECIFIED DIMENSIONS ARE IN INCHES INTERPRET PER ANSI Y 14.5M-1994		NAME	DATE	TITLE						
CE	JL1183	07MAY24								
RW	JL1183	05/16/2024								
AD	CB1094	05/22/2024								
RE	JL1183	05/23/2024								
ECN	40194988CMO									
SCALE		DOCUMENT NO.								
<b>1:20</b>		<b>MCG23RHDX-15MB</b>								
SIZE	Auth Group	INSL	MODEL			DRAWING				SHEET
<b>C</b>			VERSION	STATUS	REVISION	VERSION	STATUS	REVISION	1 OF 4	
			00	RE	A	00	RE	A		

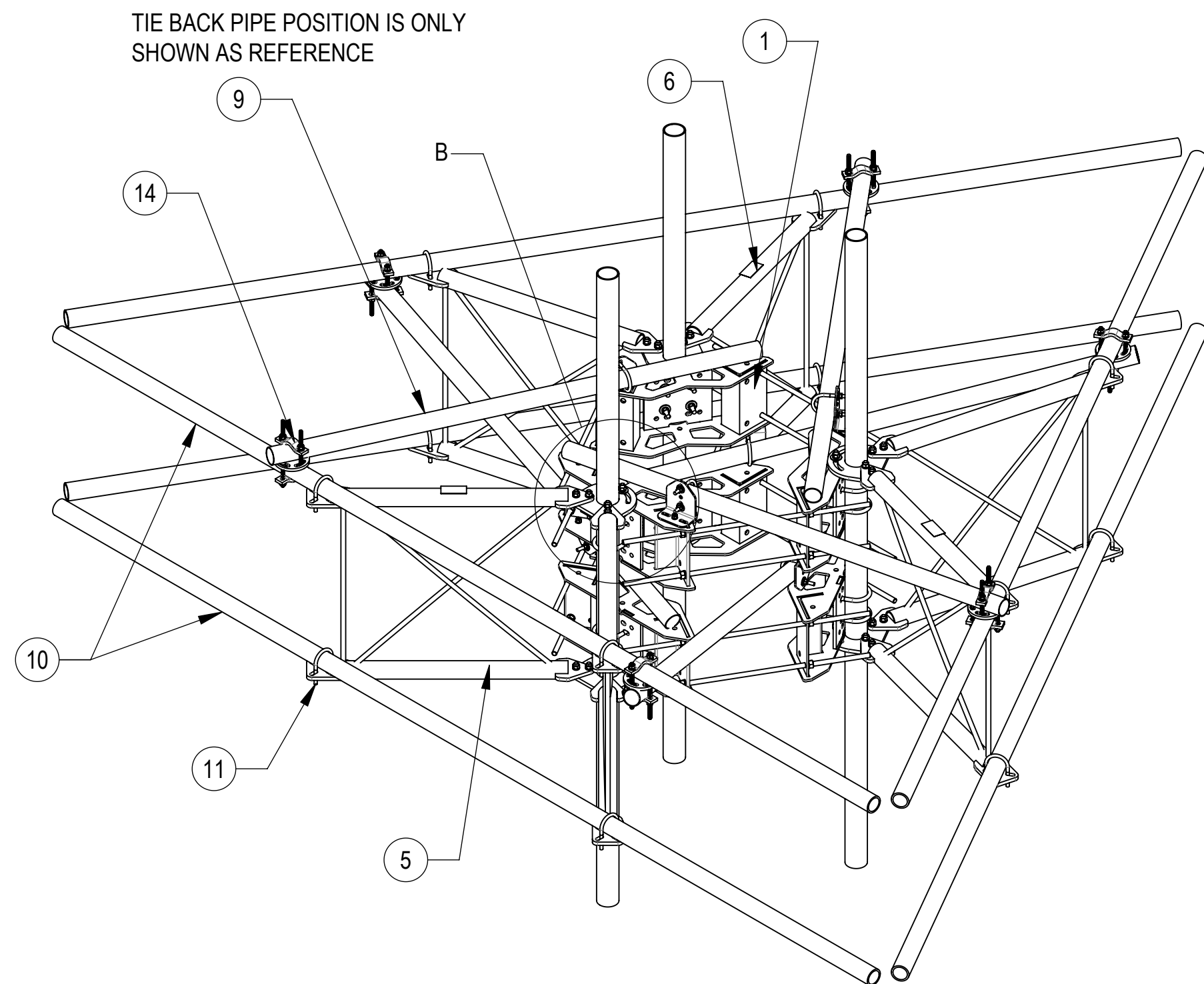
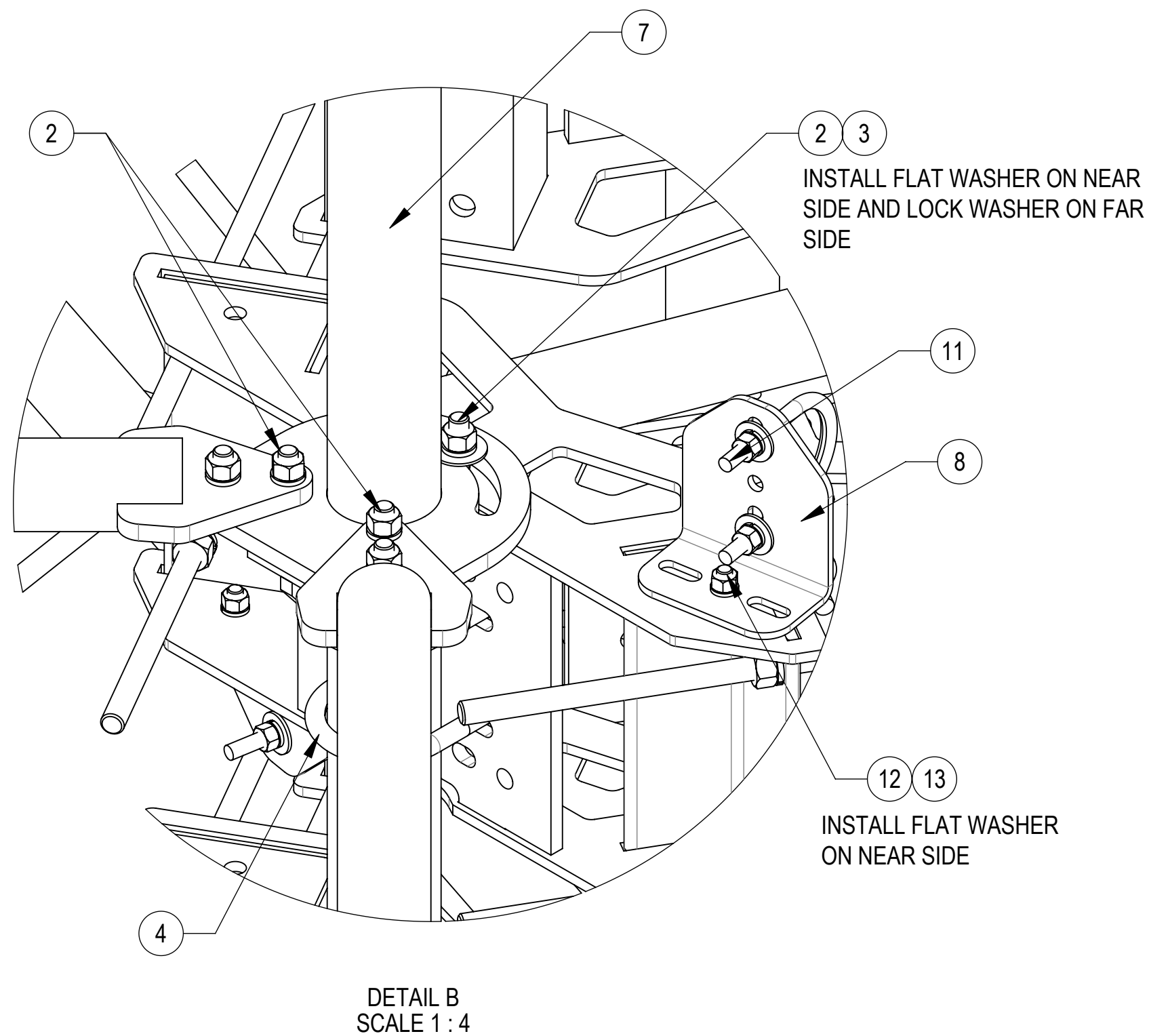
DENSITY		lbs/in <sup>3</sup>
MASS	2076.56	lbs
VOLUME	16592.99	in <sup>3</sup>
SURFACE AREA	95456.08	in <sup>2</sup>
HEIGHT	120"	
LENGTH	180"	
WIDTH	84"	

4

3

2

1

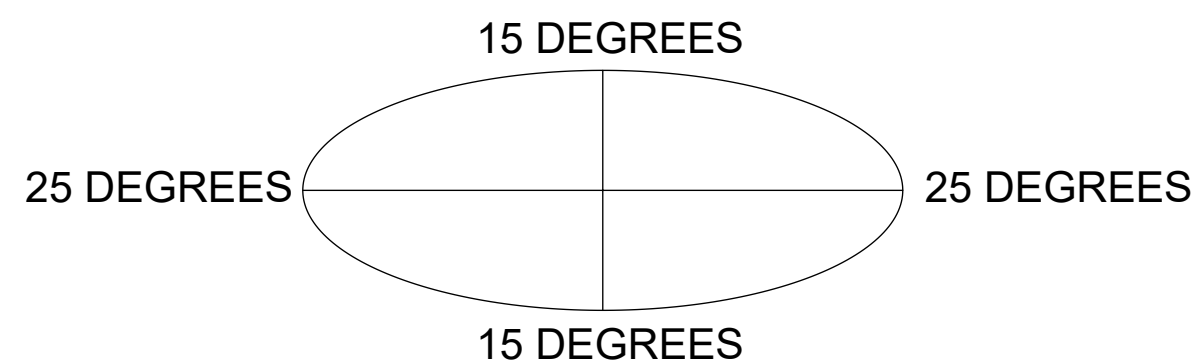


COMPONENT PART NUMBERS PROVIDED FOR ASSEMBLY PURPOSES;  
INDIVIDUAL COMPONENTS MAY BE SHIPPED AS PARTS WITHIN AN INCLUDED KIT.

ITEM	PART NO.	DESCRIPTION	QTY.	WEIGHT	NOTE NO.
1	MC-RM1550-3	15" - 50" OD RINGMOUNT	2	229.90 LBS	
2	GB-05225	5/8" X 2-1/4" GALV BOLT KIT	30	0.28 LBS	
3	GWF-05	5/8" GALV FLAT WASHER, 1.7OD	6	0.06 LBS	
4	GUB-53560	5/8" X 3-5/8" X 6" GALV U-BOLT	12	1.30 LBS	
5	SFG23175	ARM, STANDOFF - SFG23	6	63.28 LBS	
6	SFG2398	LABEL, SFG23RHDX	3	0.04 LBS	
7	SFG2204	WELDMENT, BACK VERTICAL ARM MOUNT	3	36.96 LBS	
8	XAU01	ANGLE, CROSSOVER, 1.9-3.5" X 1.9-3.5" OD	6	2.98 LBS	
9	MT546084120	2.88" OD X 84" LONG PIPE	6	24.81 LBS	
10	MT546180276	PIPE, 2.875"OD X 180"	6	115.33 LBS	
11	GUB-4352	1/2" X 3" X 5-1/4" GALV U-BOLT	18	0.71 LBS	
12	GB-04145	1/2" X 1-1/2" GALV BOLT KIT	6	0.13 LBS	
13	GWF-04	1/2" GALV FLAT WASHER	6	0.04 LBS	
14	XP-R	CROSSOVER PLATE, ROUND, UP TO 3.5" OD	6	6.20 LBS	

**ALLOWABLE TIEBACK ANGLE**

± 15 DEGREES VERTICAL  
± 25 DEGREES HORIZONTAL



COMMSCOPE, INC. OF NORTH CAROLINA

TITLE		MP,SF,15'FP,NOAP		
SIZE	SCALE	DOCUMENT NO.		
C	1:20	MCG23RHDX-15MB		
DRAWING		VERSION	STATUS	REVISION
SHEET		00	RE	A
2 OF 4				

4

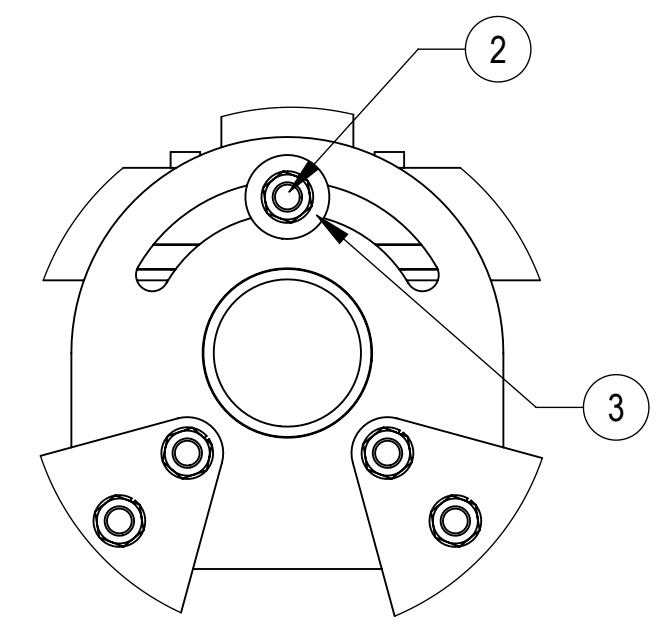
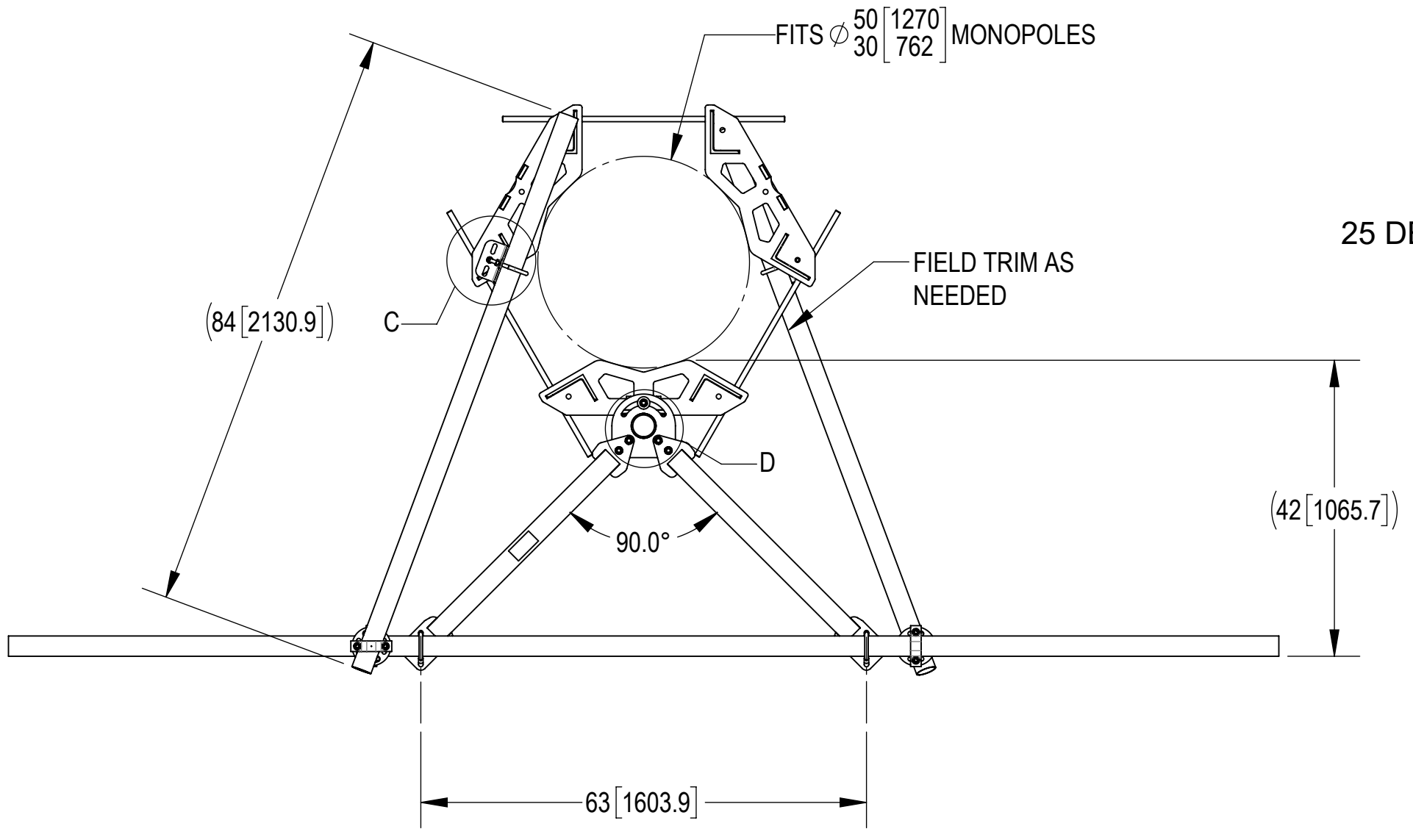
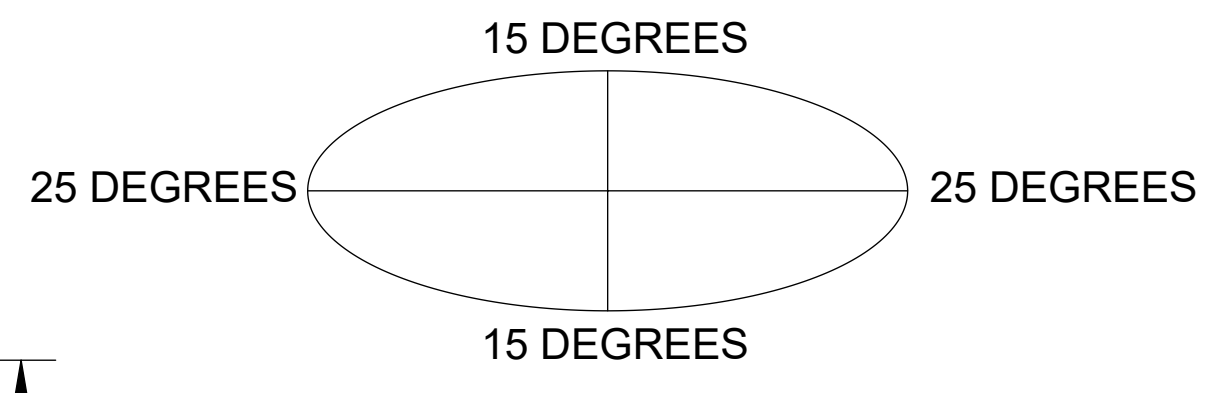
3

2

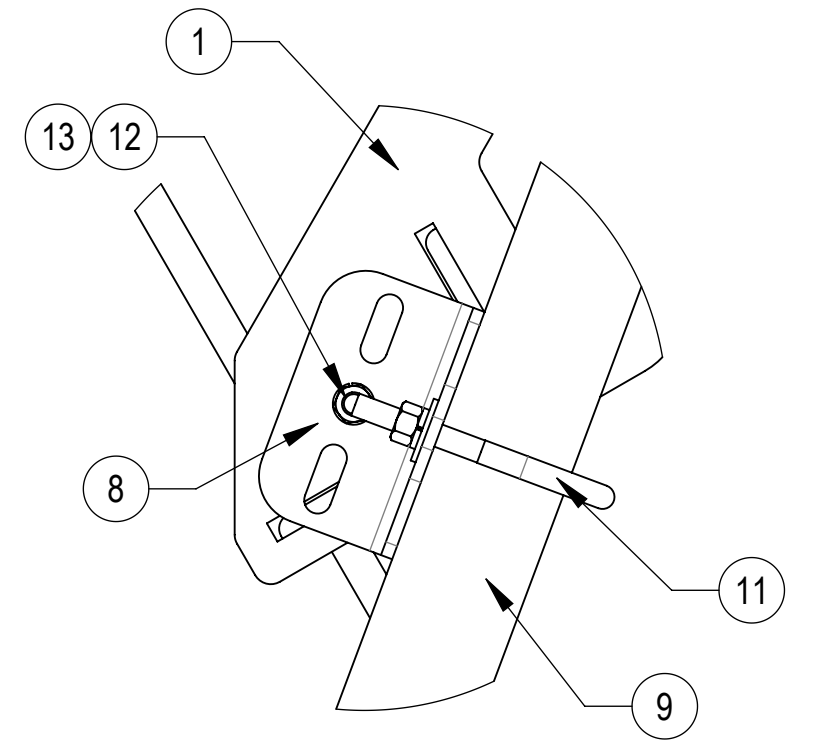
1

### ALLOWABLE TIEBACK ANGLE

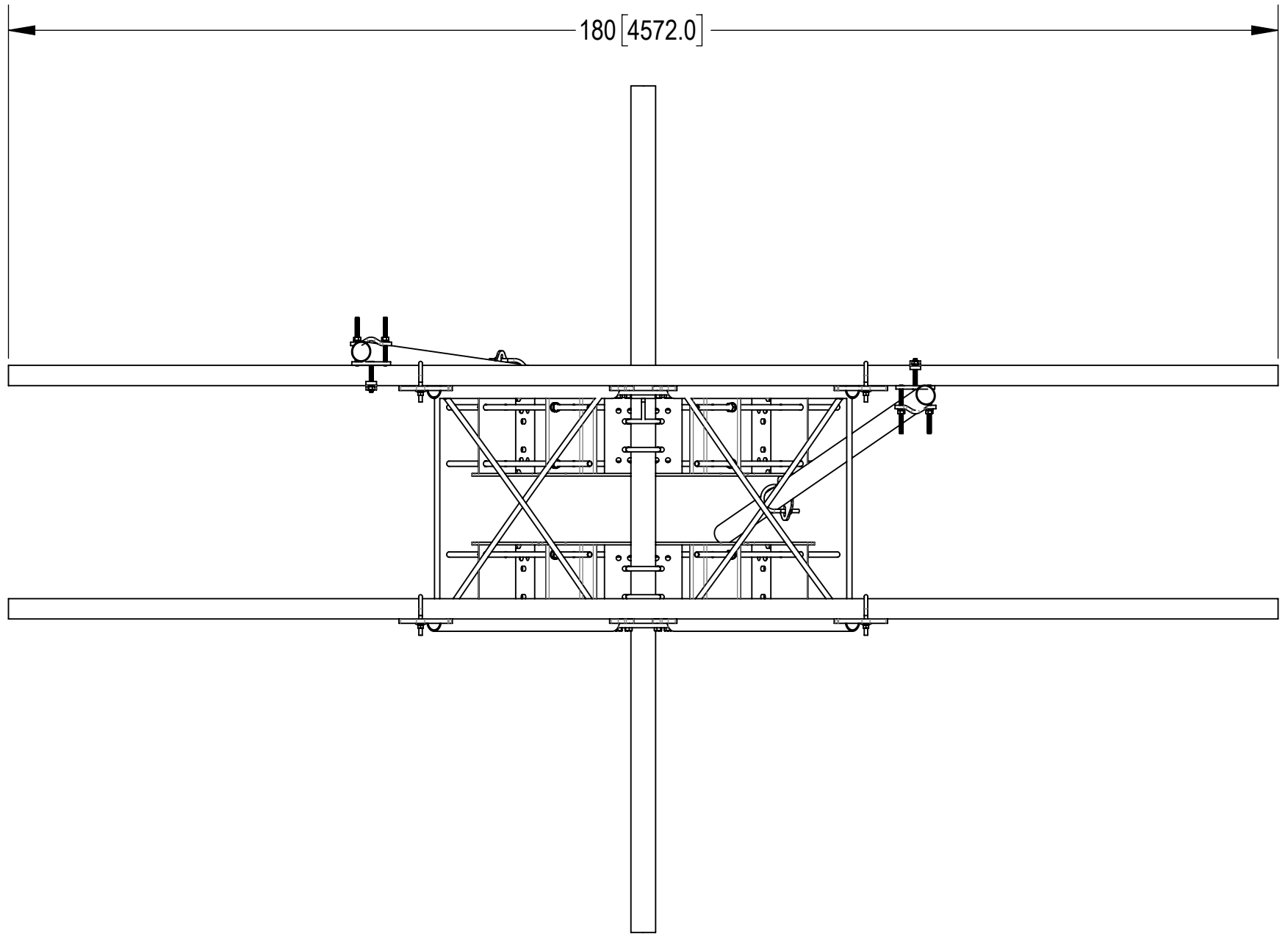
±15 DEGREES VERTICAL  
±25 DEGREES HORIZONTAL



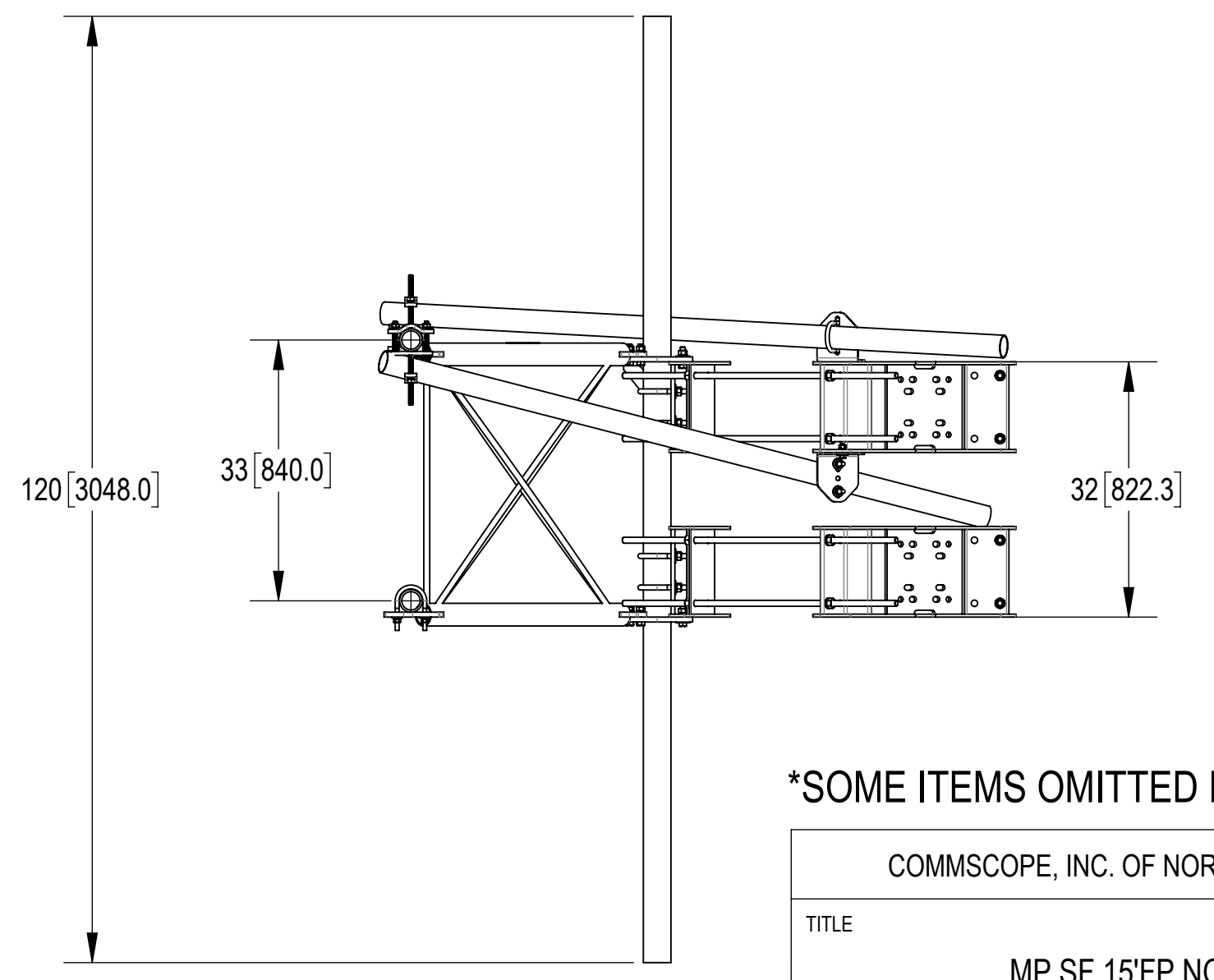
DETAIL D  
SCALE 1:4



DETAIL C  
SCALE 1:4



TOP  
↓  
BOTTOM



\*SOME ITEMS OMITTED FOR CLARITY\*

COMMSCOPE, INC. OF NORTH CAROLINA				
TITLE MP,SF,15'FP,NOAP				
SIZE C	SCALE 1:20	DOCUMENT NO. MCG23RHDx-15MB		
		DRAWING		SHEET
		VERSION	STATUS	REVISION
		00	RE	A
				SHEET 3 OF 4

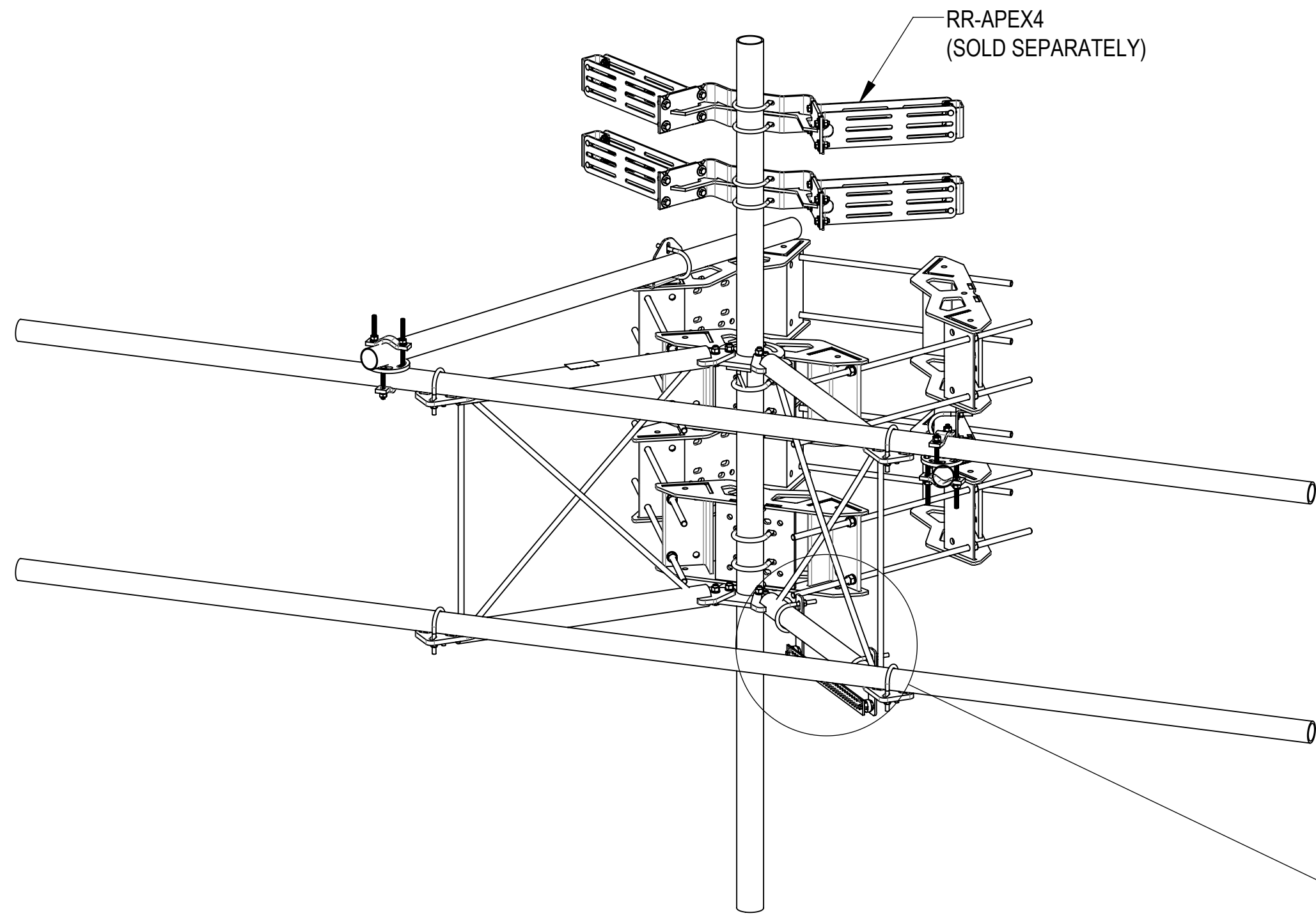
4

3

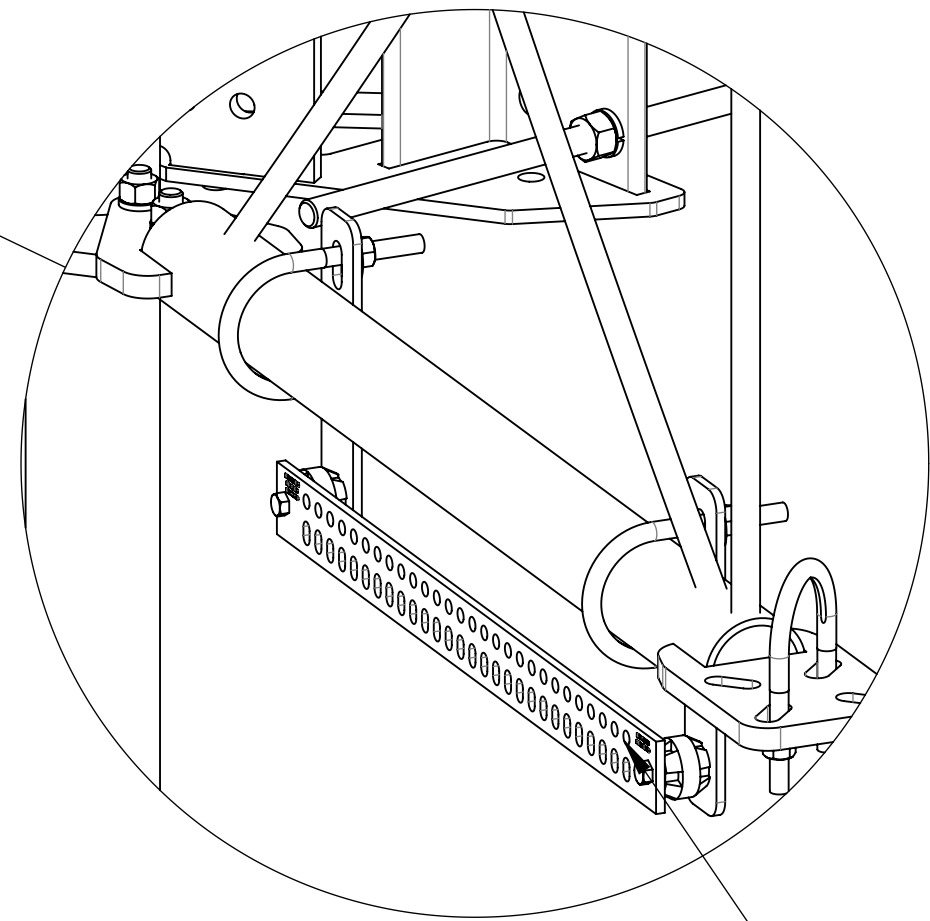
2

1

OPTIONAL ACCESSORIES:



RR-APEX4  
(SOLD SEPARATELY)

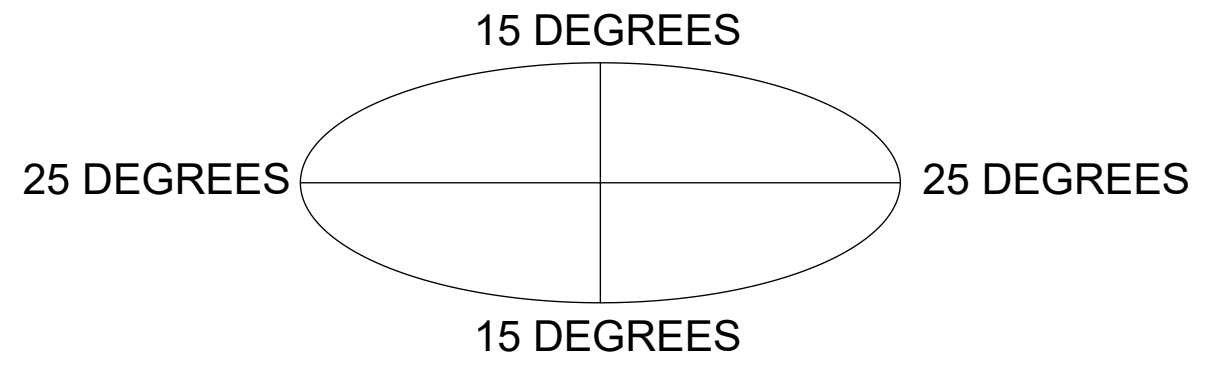


GBSF278  
(SOLD SEPARATELY)

DETAIL E  
SCALE 1:5

**ALLOWABLE TIEBACK ANGLE**

±15 DEGREES VERTICAL  
±25 DEGREES HORIZONTAL



COMMSCOPE, INC. OF NORTH CAROLINA				
TITLE MP,SF,15'FP,NOAP				
SIZE <b>C</b>	SCALE <b>1:24</b>	DOCUMENT NO. <b>MCG23RHDx-15MB</b>		
		DRAWING		SHEET
		VERSION 00	STATUS RE	REVISION A