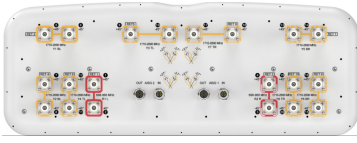


RR2V4-6533D-R10



20-port Sector/Multi beam antenna, 4x 698–960 MHz 65° HPBW and 16x 1710–2690MHz 8x33° HPBW, 10x RET

- All Internal RET actuators are connected in “Cascaded SRET” configuration
- Uses the 4.3-10 connector which is 40 percent smaller than the 7-16 DIN connector
- New aerodynamic endcaps for wind load optimization

General Specifications

Antenna Type	Sector
Band	Multiband
Grounding Type	RF connector inner conductor and body grounded to reflector and mounting bracket
Performance Note	Outdoor usage
RF Connector Interface	4.3-10 Female
RF Connector Location	Bottom
RF Connector Quantity, high band	16
RF Connector Quantity, low band	4
RF Connector Quantity, total	20

Remote Electrical Tilt (RET) Information

RET Hardware	CommRET v2
RET Interface	8-pin DIN Female 8-pin DIN Male
RET Interface, quantity	2 female 2 male
Input Voltage	10–30 Vdc
Internal RET	High band (8) Low band (2)
Power Consumption, active state, maximum	8 W
Power Consumption, idle state, maximum	1 W
Protocol	3GPP/AISG 2.0

Dimensions


Width	640 mm 25.197 in
Depth	235 mm 9.252 in
Length	2688 mm 105.827 in

RR2V4-6533D-R10

Net Weight, antenna only

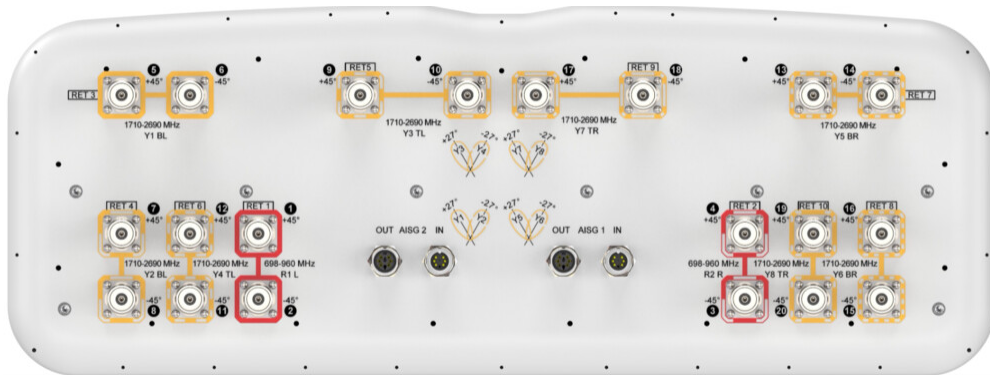
78 kg | 171.96 lb

Array Layout



Array ID	Frequency (MHz)	RF Connector	RET (SRET)	AISG No.	AISG RET UID
R1	698-960	1 - 2	1	AISG1	CPxxxxxxxxxxxxR1
R2	698-960	3 - 4	2	AISG1	CPxxxxxxxxxxxxR2
Y1	1710-2690	5 - 6	3	AISG1	CPxxxxxxxxxxxxY1
Y2	1710-2690	7 - 8	4	AISG1	CPxxxxxxxxxxxxY2
Y3	1710-2690	9 - 10	5	AISG1	CPxxxxxxxxxxxxY3
Y4	1710-2690	11 - 12	6	AISG1	CPxxxxxxxxxxxxY4
Y5	1710-2690	13 - 14	7	AISG1	CPxxxxxxxxxxxxY5
Y6	1710-2690	15 - 16	8	AISG1	CPxxxxxxxxxxxxY6
Y7	1710-2690	17 - 18	9	AISG1	CPxxxxxxxxxxxxY7
Y8	1710-2690	19 - 20	10	AISG1	CPxxxxxxxxxxxxY8

Port Configuration



Electrical Specifications

Impedance	50 ohm
Operating Frequency Band	1710 – 2690 MHz 698 – 960 MHz
Polarization	±45°
Total Input Power, maximum	2,250 W @ 50 °C

Electrical Specifications

	R1,R2	R1,R2	R1,R2	Y1-Y8	Y1-Y8	Y1-Y8	Y1-Y8	Y1-Y8
Frequency Band, MHz	698-790	790-890	890-960	1710-1880	1850-1990	1920-2180	2300-2500	2500-2690

RR2V4-6533D-R10

RF Port	1-4	1-4	1-4	5-20	5-20	5-20	5-20	5-20
Gain at Mid Tilt, dBi	16.2	16.4	16.4	17.4	18.3	19	20	20.1
Beam Centers, Horizontal, degrees				±27	±27	±27	±27	±27
Beamwidth, Horizontal, degrees	63	62	69	36	34	33	26	25
Beamwidth, Vertical, degrees	9	8.2	7.5	7.2	6.8	6.4	5.6	5.2
Beam Tilt, degrees	2–12	2–12	2–12	2–12	2–12	2–12	2–12	2–12
USLS (First Lobe), dB	19	21	19	17	18	17	18	19
Front-to-Back Ratio at 180°, dB	34	33	29	34	35	35	34	32
Isolation, Cross Polarization, dB	25	25	25	25	25	25	25	25
Isolation, Inter-band, dB	25	25	25	25	25	25	25	25
VSWR Return loss, dB	1.5 14.0	1.5 14.0	1.5 14.0	1.5 14.0	1.5 14.0	1.5 14.0	1.5 14.0	1.5 14.0
PIM, 3rd Order, 2 x 20 W, dBc	-150	-150	-150	-150	-150	-150	-150	-150
Input Power per Port at 50°C, maximum, watts	250	250	250	200	200	200	150	150

Electrical Specifications, BASTA

Frequency Band, MHz	698–790	790–890	890–960	1710–1880	1850–1990	1920–2180	2300–2500	2500–2690
Gain by all Beam Tilts, average, dBi	16.1	16.3	16.3	17.2	18	18.8	19.7	19.7
Gain by all Beam Tilts Tolerance, dB	±0.3	±0.3	±0.5	±1.4	±0.6	±0.9	±0.6	±0.6
Beamwidth, Horizontal Tolerance, degrees	±5	±5	±6	±2	±2	±2	±2	±2
Beamwidth, Vertical Tolerance, degrees	±0.5	±0.6	±0.4	±0.4	±0.3	±0.4	±0.3	±0.3
USLS, beampeak to 20° above beampeak, dB	17	17	17	14	16	16	15	16
Front-to-Back Total Power at 180° ± 30°, dB	25	25	24	28	29	29	28	27
CPR at Boresight, dB	14	15	15	19	20	21	20	16
CPR at Sector, dB	10	10	13					
CPR at 10 dB Horizontal Beamwidth, dB				10	12	13	12	10

Mechanical Specifications

Wind Loading @ Velocity, frontal

1,103.0 N @ 150 km/h (248.0 lbf @ 150 km/h)

RR2V4-6533D-R10

Wind Loading @ Velocity, lateral	329.0 N @ 150 km/h (74.0 lbf @ 150 km/h)
Wind Loading @ Velocity, maximum	1,405.0 N @ 150 km/h (315.9 lbf @ 150 km/h)
Wind Loading @ Velocity, rear	689.0 N @ 150 km/h (154.9 lbf @ 150 km/h)
Wind Speed, maximum	241 km/h (150 mph)

Packaging and Weights

Width, packed	760 mm 29.921 in
Depth, packed	390 mm 15.354 in
Length, packed	2910 mm 114.567 in
Weight, gross	103 kg 227.076 lb

Regulatory Compliance/Certifications

Agency	Classification
CHINA-ROHS	Above maximum concentration value
ISO 9001:2015	Designed, manufactured and/or distributed under this quality management system
ROHS	Compliant/Exempted
UK-ROHS	Compliant/Exempted



Included Products

- | | | |
|-----------|---|--|
| BSAMNT-4 | - | Wide Profile Antenna Downtilt Mounting Kit for 2.4 - 4.5 in (60 - 115 mm) OD round members. Kit contains one scissor top bracket set and one bottom bracket set. |
| BSAMNT-M4 | - | Middle Downtilt Mounting Kit for Long Antennas for 2.4 - 4.5 in (60 - 115 mm) OD round members. Kit contains one scissor bracket set. |

* Footnotes

Performance Note Severe environmental conditions may degrade optimum performance

BSAMNT-4



Wide Profile Antenna Downtilt Mounting Kit for 2.4 - 4.5 in (60 - 115 mm) OD round members. Kit contains one scissor top bracket set and one bottom bracket set.

Product Classification

Product Type Downtilt mounting kit

General Specifications

Application Outdoor

Color Silver

Dimensions

Compatible Diameter, maximum 115 mm | 4.528 in

Compatible Diameter, minimum 60 mm | 2.362 in

Weight, net 6.5 kg | 14.33 lb

Material Specifications

Material Type Galvanized steel

Packaging and Weights

Included Brackets | Hardware

Packaging quantity 1

Regulatory Compliance/Certifications

Agency	Classification
CHINA-ROHS	Below maximum concentration value
ISO 9001:2015	Designed, manufactured and/or distributed under this quality management system
REACH-SVHC	Compliant as per SVHC revision on www.commscope.com/ProductCompliance
ROHS	Compliant
UK-ROHS	Compliant



BSAMNT-M4



Middle Downtilt Mounting Kit for Long Antennas for 2.4 - 4.5 in (60 - 115 mm) OD round members. Kit contains one scissor bracket set.

Product Classification

Product Type Downtilt mounting kit

General Specifications

Application Outdoor

Color Silver

Dimensions

Compatible Diameter, maximum 115 mm | 4.528 in

Compatible Diameter, minimum 60 mm | 2.362 in

Weight, net 4.6 kg | 10.141 lb

Material Specifications

Material Type Galvanized steel

Packaging and Weights

Included Brackets | Hardware

Packaging quantity 1

Regulatory Compliance/Certifications

Agency	Classification
CHINA-ROHS	Below maximum concentration value
ISO 9001:2015	Designed, manufactured and/or distributed under this quality management system
REACH-SVHC	Compliant as per SVHC revision on www.commscope.com/ProductCompliance
ROHS	Compliant
UK-ROHS	Compliant

