

4

3

2

1

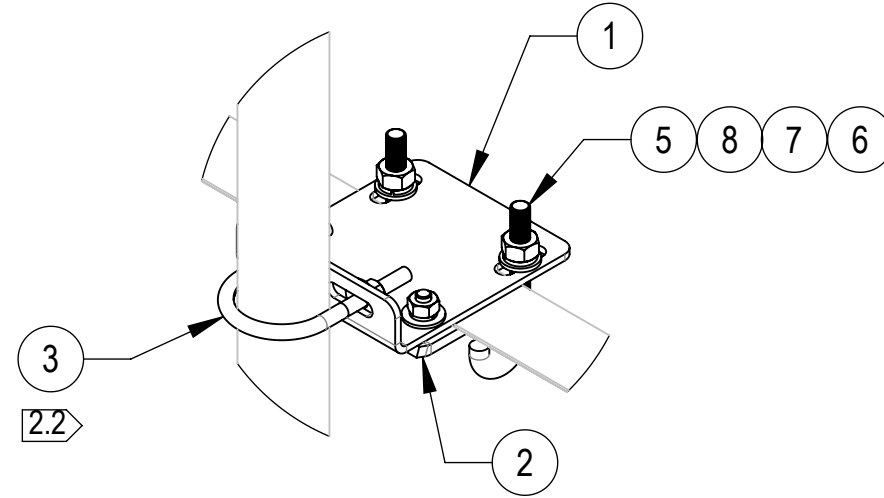
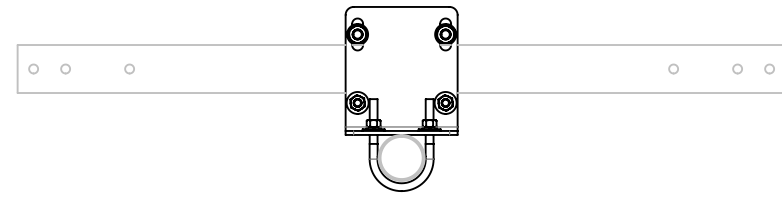
- 1.0 GENERAL NOTES
- 1.1 ALL METRIC DIMENSIONS ARE IN BRACKETS [X.X]
- 1.2 FOR PATENT INFO: <https://www.cs-pat.com>

- 2.0 DESIGN NOTES
- 2.1 SUITABLE FOR 2-7/8" OD TO 3-1/2" OD PIPES, SMALLEST PIPE REQUIRED TO PAIR WITH PAM-HD IS 2-7/8" IN OD X 0.25" IN WALL.
- 2.2 U-BOLTS FOR OTHER THAN 2-7/8" OD PIPE MUST BE PURCHASED SEPARATELY.

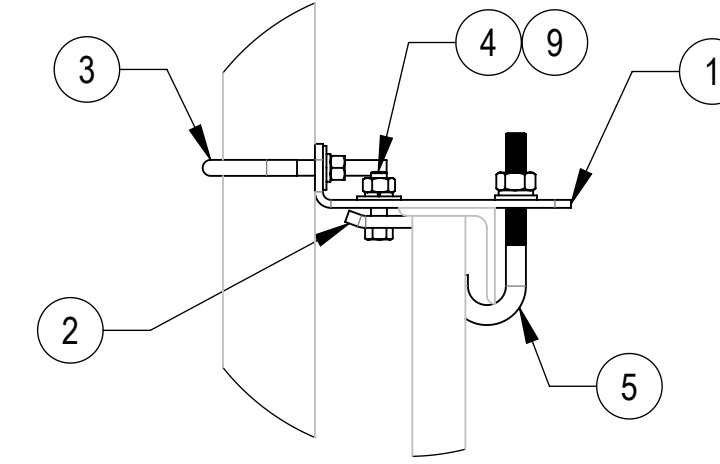
- 3.0 MANUFACTURING/SPECIAL REQUIREMENTS
- 3.1 TIGHTEN ALL BOLTS SECURING FLAT PLATES BY THE TURN-OF-NUT METHOD. TIGHTEN ALL U-BOLTS USING TURN-OF-NUT METHOD WITH ATTENTION TO LEAVE EQUAL DISTANCE AND EQUAL FORCE ON EACH LEG OF THE U-BOLT.

- 4.0 TEST
- 5.0 PACKAGING
- 5.1 PACKAGING SHALL MEET COMMSCOPE REQUIREMENTS PER DOCUMENT IS-PL-3005
- 5.2 PRINTED DOCUMENT TO BE PLACED INSIDE POLYBAG AND THEN IN SHIPPING CONTAINER
- 5.3 EXTRA HARDWARE MAY BE SUPPLIED, BAGGED AND SHIPPED

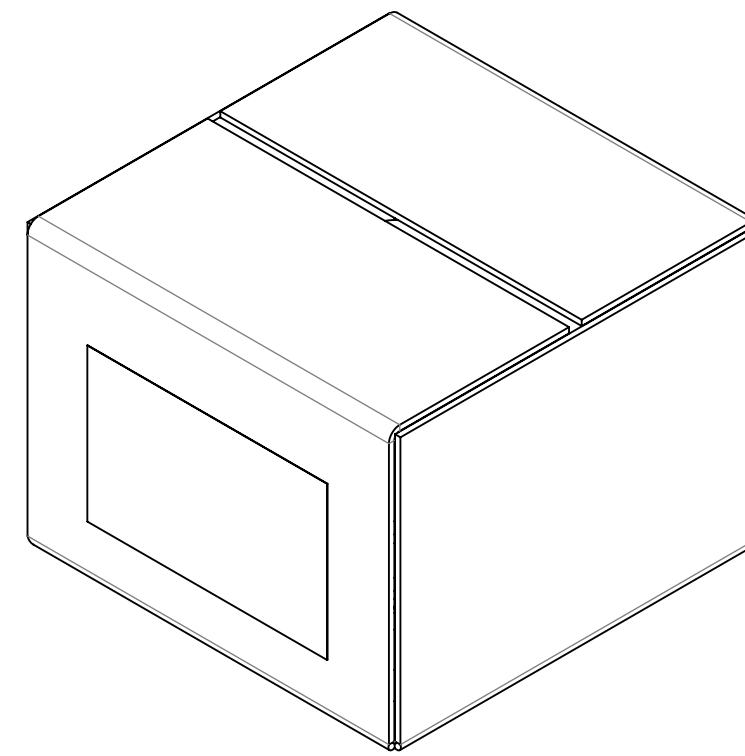
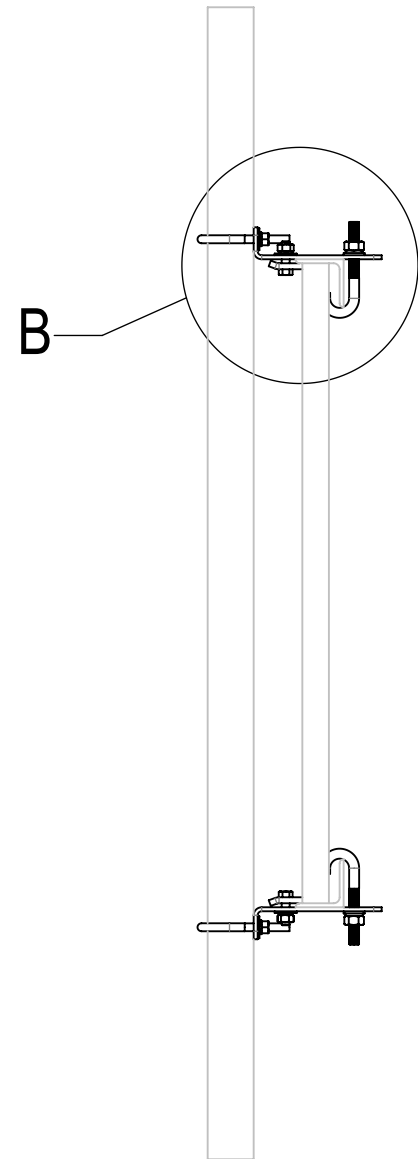
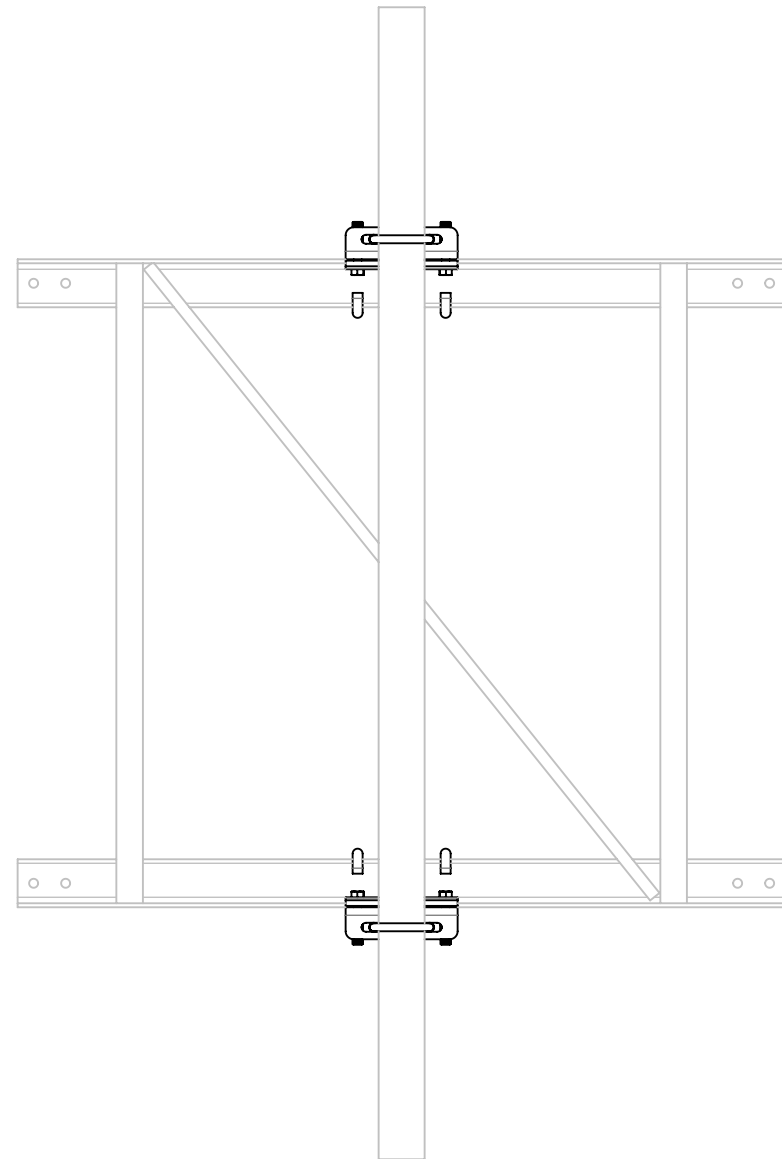
REVISIONS			
REV.	DESCRIPTION	DATE	APPROVED
A	INITIAL RELEASE	RY1002 07JUN24	EB1063 40187794CMO



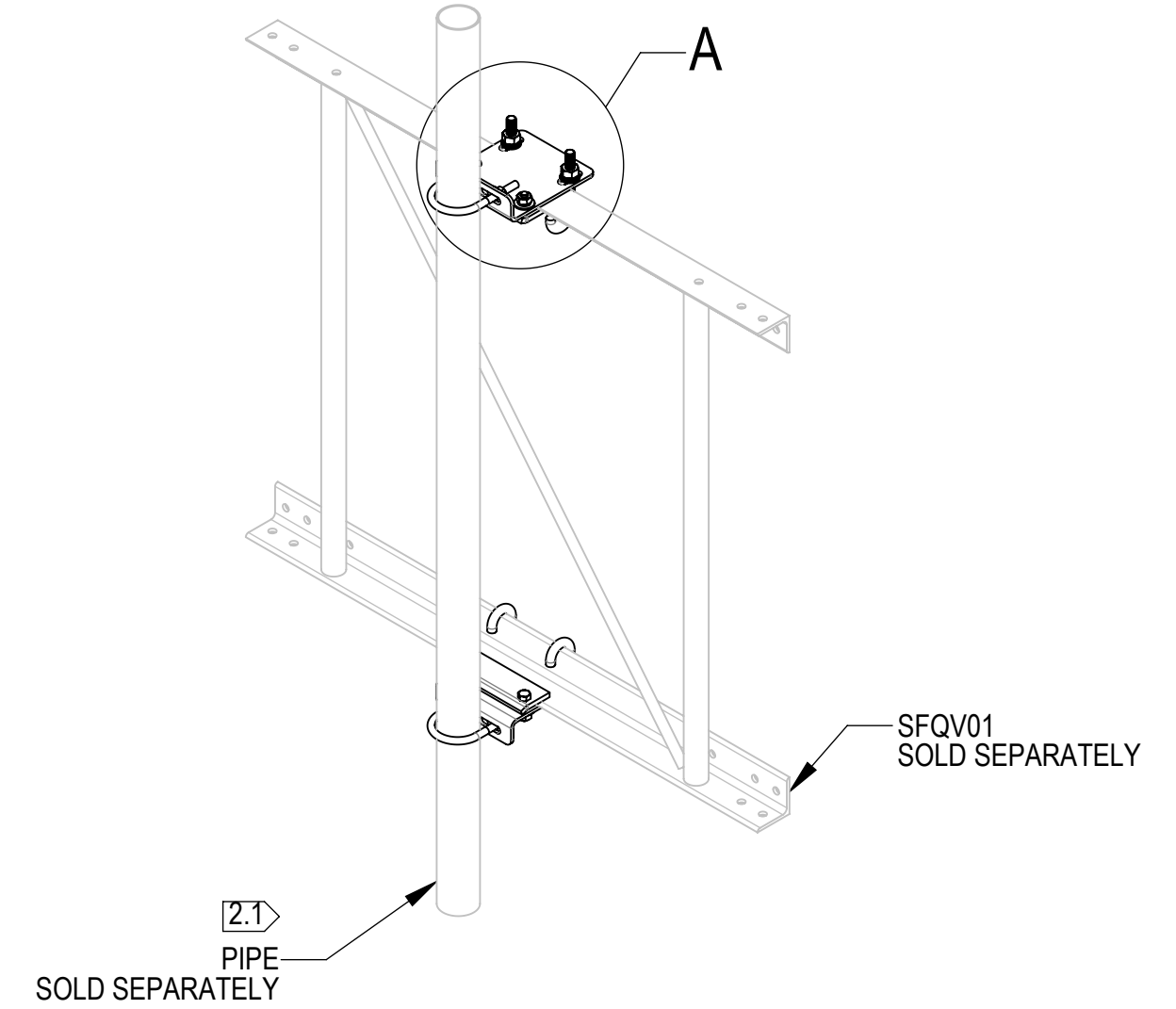
DETAIL A
SCALE 1 : 6



DETAIL B
SCALE 1 : 6



PACKAGE



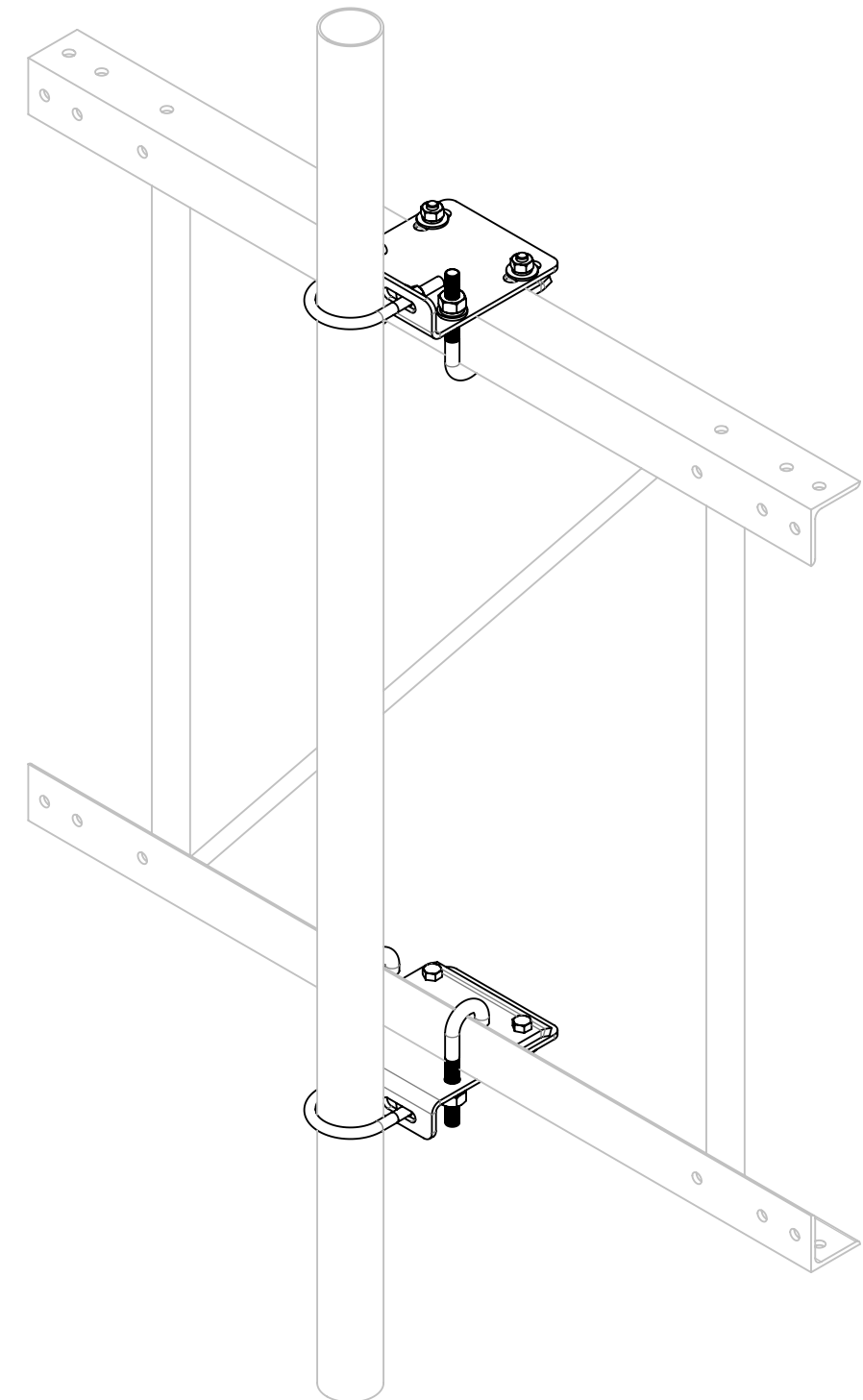
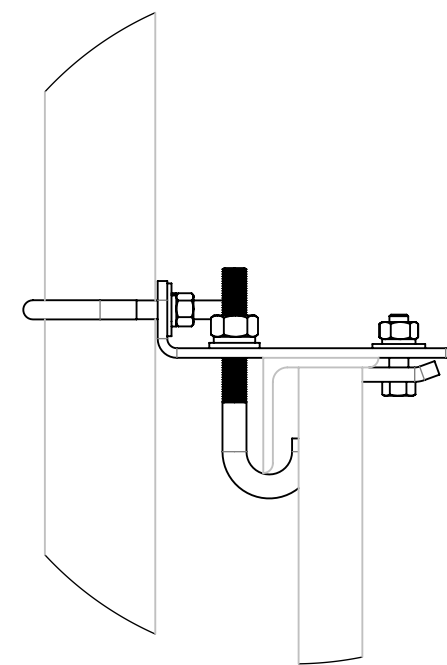
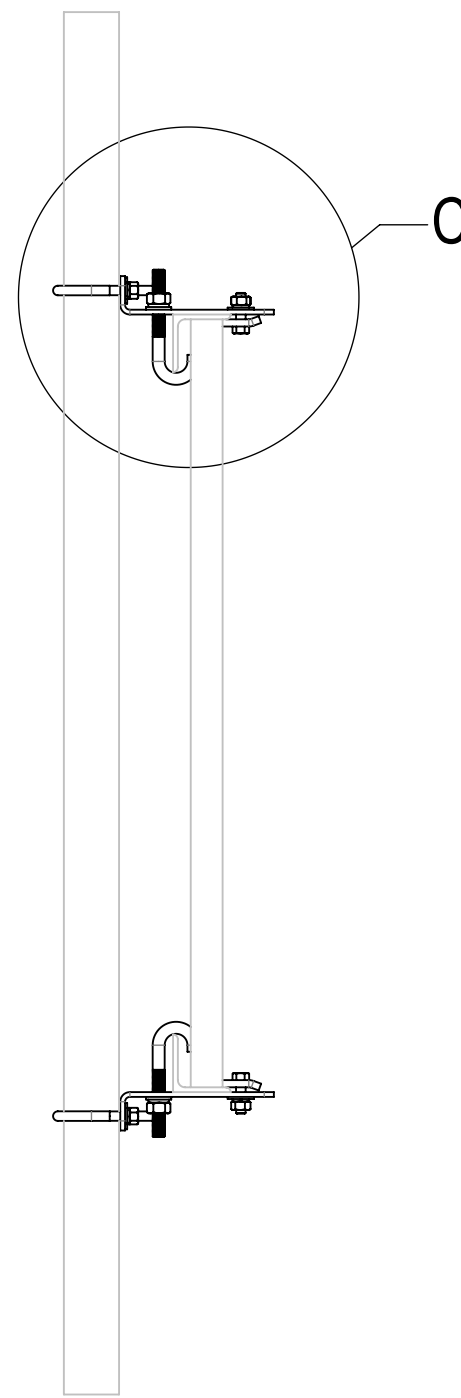
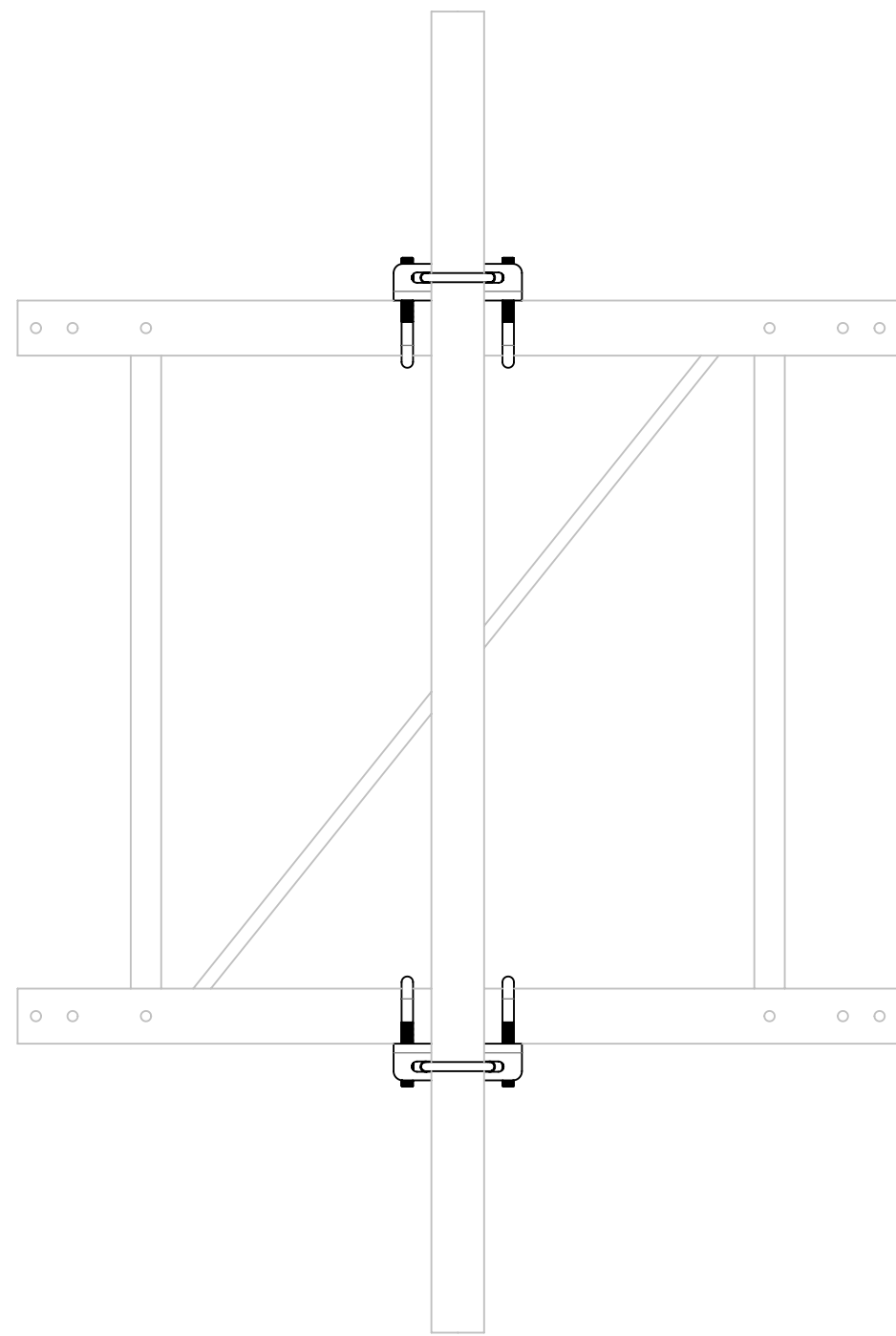
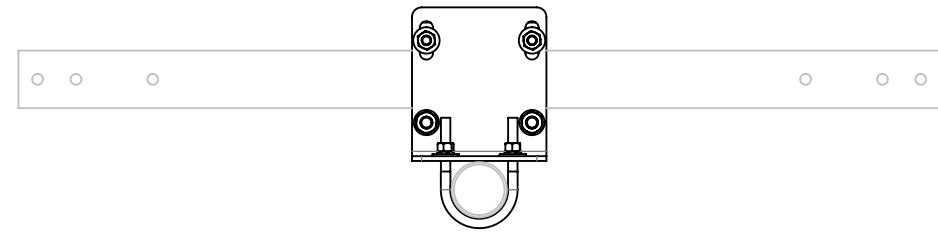
COMPONENT PART NUMBERS PROVIDED FOR ASSEMBLY PURPOSES;
INDIVIDUAL COMPONENTS MAY BE SHIPPED AS PARTS WITHIN AN INCLUDED KIT.

ITEM	PART NO.	DESCRIPTION	QTY.	WEIGHT	NOTE NO.
1	PAM-HD01-00	ANGLE, 2 X 8 X 7 X 1/4"	2	4.33 LBS	
2	PAM-HD02-00	PINCH PLATE	2	1.91 LBS	
3	GUB-4352	1/2" X 3" X 5-1/4" GALV U-BOLT	2	0.71 LBS	
4	GB-0416A	1/2" X 1-3/4" GALV BOLT KIT (A325)	4	0.14 LBS	
5	WBJB8	5/8" J-BOLT	4	0.65 LBS	
6	GN-05A	5/8" GALV HEX NUT (A194 2H)	4	0.12 LBS	
7	GWL-05	5/8" GALV LOCK WASHER	4	0.03 LBS	
8	GWF05A	GALV FLAT WASHER HARDENED 5/8", 1.30D	4	0.04 LBS	
9	GWF-04	1/2" GALV FLAT WASHER	4	0.04 LBS	


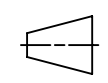
DENSITY	99.83	lbs/in ³
MASS	99.83	lbs
VOLUME	353.43	in ³
SURFACE AREA	3857.64	in ²
HEIGHT	12.0"	
LENGTH	12.0"	
WIDTH	6.0"	

COMMSCOPE, INC. OF NORTH CAROLINA												
TOLERANCES						SAP MATERIAL MASTER						
1 PLACE .X[X] ± 0.2[6.3]			3 PLACE .XXX[X] ± 0.060[1.5]			PAM-HD						
2 PLACE .XX[X] ± 0.12[3.0]			ANGLES ± 2°									
FINISH						MATERIAL						
UNLESS OTHERWISE SPECIFIED DIMENSIONS ARE IN INCHES INTERPRET PER ANSI Y 14.5M-1994	NAME	DATE	TITLE									
	CE RY1002	07JUN24	PIPE TO ANGLE MNT, 2.9-3.5OD X 2-4" ANGLE									
	RW RY1002	06/20/2024										
	AD YMENG	06/20/2024	SCALE	DOCUMENT NO.								
	RE YMENG	06/20/2024	1:12	PAM-HD								
ECN 40187794CMO			SIZE	Auth Group	INSL	MODEL			DRAWING			
			C			VERSION	STATUS	REVISION	VERSION	STATUS	REVISION	SHEET
						00	RE	A	00	RE	A	1 OF 2

ALTERNATE MOUNTING DIRECTION



DETAIL C
SCALE 1 : 5

COMMSCOPE, INC. OF NORTH CAROLINA				
TITLE PIPE TO ANGLE MNT,2.9-3.5OD X 2-4"ANGLE				
SIZE C	SCALE 1:10	DOCUMENT NO. PAM-HD		
 		DRAWING		SHEET 2 OF 2
		VERSION 00	STATUS RE	