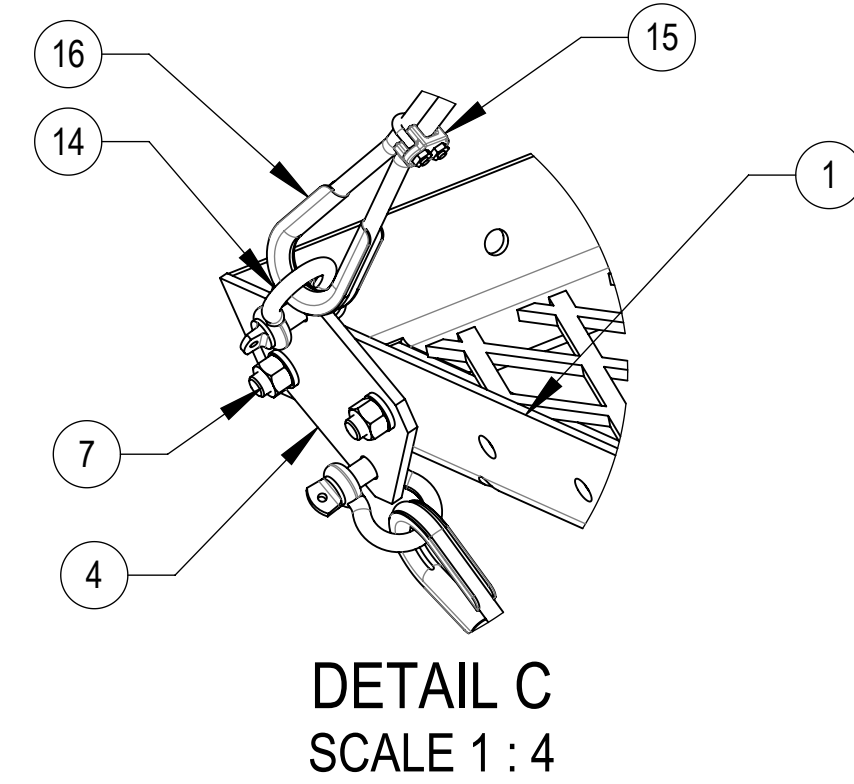
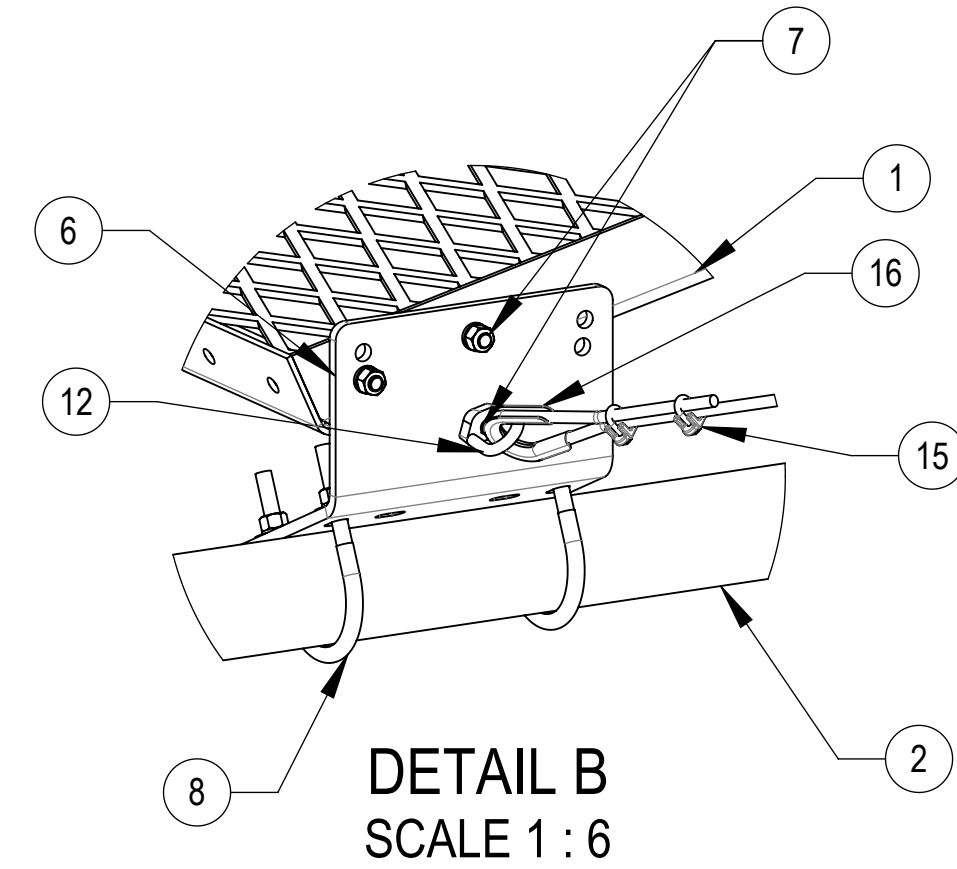
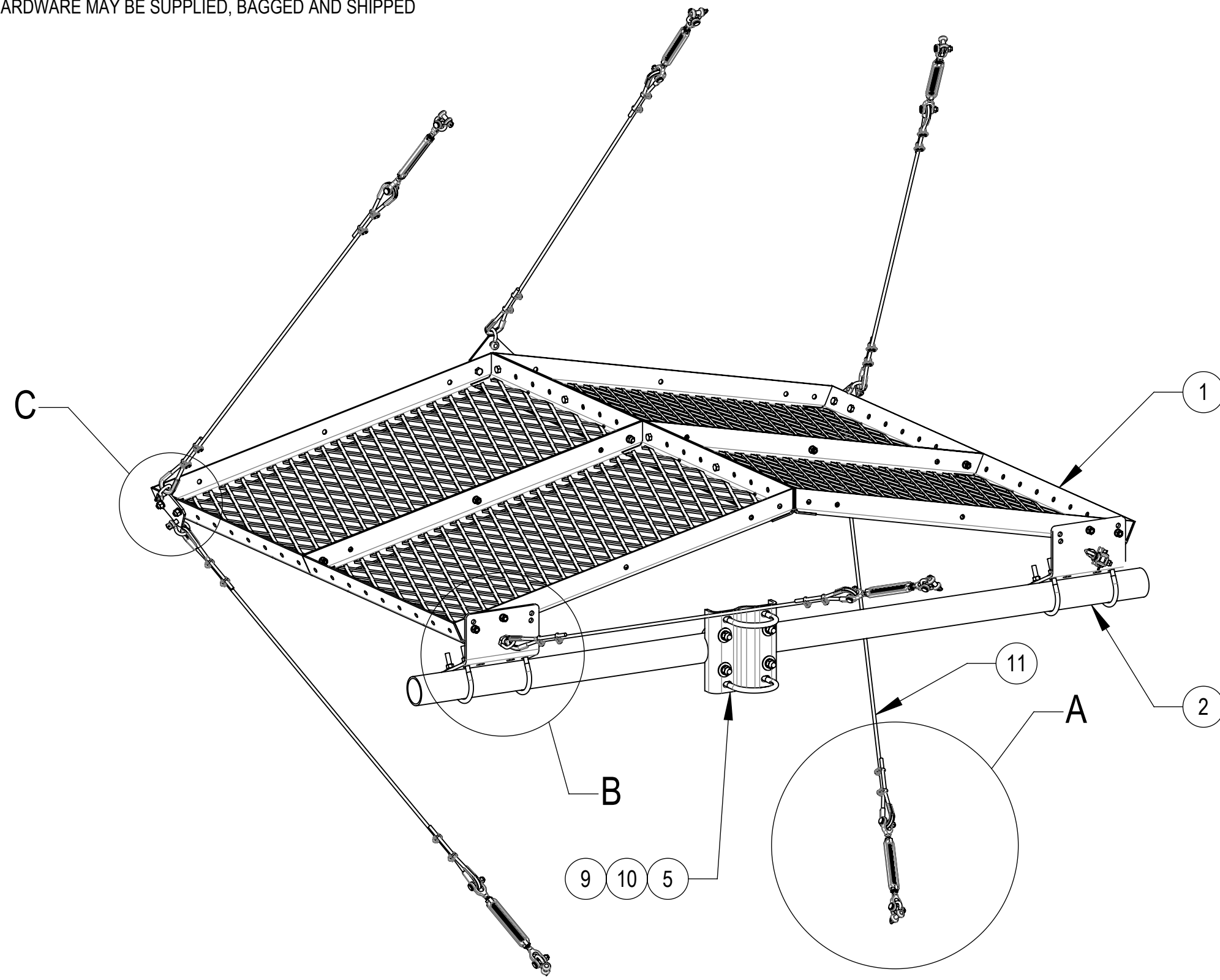


- 1.0 GENERAL NOTES
 1.1 ALL METRIC DIMENSIONS ARE IN BRACKETS [X.X]
 1.2 FOR PATENT INFO: <https://www.cs-pat.com>
 2.0 DESIGN NOTES
 3.0 MANUFACTURING/SPECIAL REQUIREMENTS
 3.1 TIGHTEN ALL BOLTS SECURING FLAT PLATES BY THE TURN-OF-NUT METHOD. TIGHTEN ALL U-BOLTS USING TURN-OF-NUT METHOD WITH ATTENTION TO LEAVE EQUAL DISTANCE AND EQUAL FORCE ON EACH LEG OF THE U-BOLT.
 3.2 3 BOLTS AT EACH PANEL CONNECTION.
 3.3 MINIMUM 45 FT-LBS OF TORQUE ON CABLE CLIPS.
 3.4 MUST HAVE ALL 7 GUY CABLE LOCATIONS.
 3.5 BRACKETS ARE MODEL DEPENDENT. BRACKETS CAN BE MOUNTED TO SIDES OR REAR.
 4.0 TEST
 5.0 PACKAGING
 5.1 PACKAGING SHALL MEET COMMSCOPE REQUIREMENTS PER DOCUMENT IS-PL-3005
 5.2 PRINTED DOCUMENT TO BE PLACED INSIDE POLYBAG AND THEN IN SHIPPING CONTAINER
 5.3 EXTRA HARDWARE MAY BE SUPPLIED, BAGGED AND SHIPPED

REVISIONS			
REV.	DESCRIPTION	DATE	APPROVED
K	INITIAL RELEASE	ACG 01OCT14	TP
L	REDRAWN IN SW	YX1027 09AUG24	BA1025 40202084CMO



COMPONENT PART NUMBERS PROVIDED FOR ASSEMBLY PURPOSES;
 INDIVIDUAL COMPONENTS MAY BE SHIPPED AS PARTS WITHIN AN INCLUDED KIT.

ITEM NO.	PART NUMBER	DESCRIPTION	QTY.	WEIGHT	NOTE NO.
1	MDS03	48" X 36" PANEL	4	87.02 LBS	
2	MT547100	3½" O.D. X 8'-4" GALV. PIPE	1	63.36 LBS	
3	MDS15	CENTER PLATE	1	1.58 LBS	
4	MDS17	SHACKLE PLATE	2	1.32 LBS	
5	MT21613	CENTER BRACKET	1	11.80 LBS	
6	MDS20	SIDE BRACKET	2	13.15 LBS	3.5
7	GB-04125	1/2" X 1-1/4" GALV BOLT KIT	24	0.12 LBS	
8	GUB-4356	1/2" X 3-5/8" X 6" GALV U-BOLT KIT	4	0.88 LBS	
9	GUB-53560	5/8" X 3-5/8" X 6" GALV U-BOLT	2	1.30 LBS	
10	GUB-5456	5/8" X 4-5/8" X 6½" GALV U-BOLT	2	1.43 LBS	
11	MT-297	7 X 19 3/8 (200 FOOT) WIRE ROPE	1	2.46 LBS	
12	MT-309	EYE NUT 3/8" WITH 1/2" THREAD	2	0.26 LBS	
13	MT-320	1/2" X 6" LONG JAW-JAW TURNBUCKLE	7	1.788 LBS	
14	MT-345	3/8 SHACKLE	12	0.33 LBS	
15	MT-326	3/8" CABLE CLIP	28	0.08 LBS	
16	MT-303	3/8" OPEN THIMBLE GALV	14	0.12 LBS	

DENSITY	507.05	lbs/in ³
MASS	507.05	lbs
VOLUME	1788.61	in ³
SURFACE AREA	19655.25	in ²
HEIGHT	116"	
LENGTH	100"	
WIDTH	141"	

© 2024 CommScope, Inc. Confidential

COMMSCOPE, INC. OF NORTH CAROLINA									
TOLERANCES					SAP MATERIAL MASTER				
1 PLACE .X[X] ± 0.12[3.0]			3 PLACE .XXX[X] ± 0.03[0.8]		MD-S6				
2 PLACE .XX[X] ± 0.06[1.5]			ANGLES ± 2°						
FINISH					MATERIAL				
MICROWAVE DISH SHIELD, 6' ANTENNA									
NAME		DATE		TITLE					
CE	ACG	01OCT14		MD-S6					
RW	YMENG	08/16/2024							
AD	BA1025	08/16/2024							
RE	YX1027	08/16/2024							
ECN 40202084CMO				SCALE	DOCUMENT NO.				
				1:50					
SIZE	Auth Group	INSL	MODEL			DRAWING			
C			VERSION	STATUS	REVISION	VERSION	STATUS	REVISION	SHEET
			01	RE	M	01	RE	L	1 OF 3

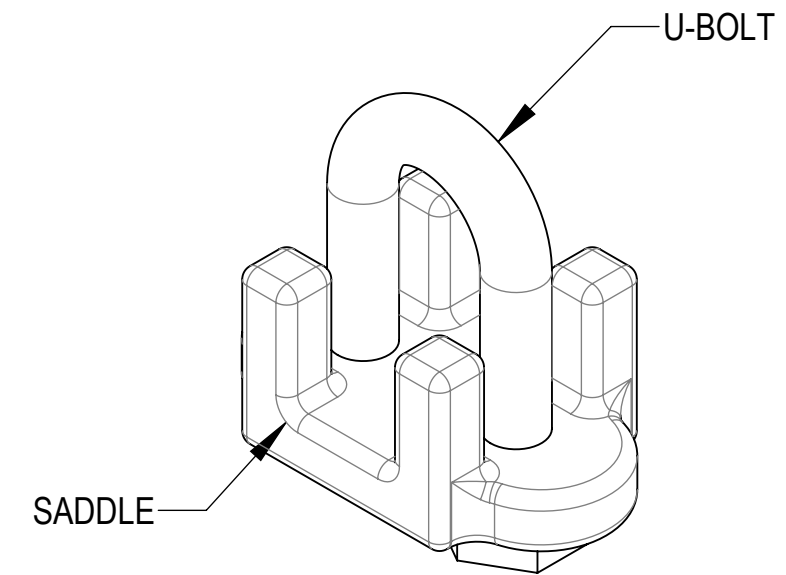
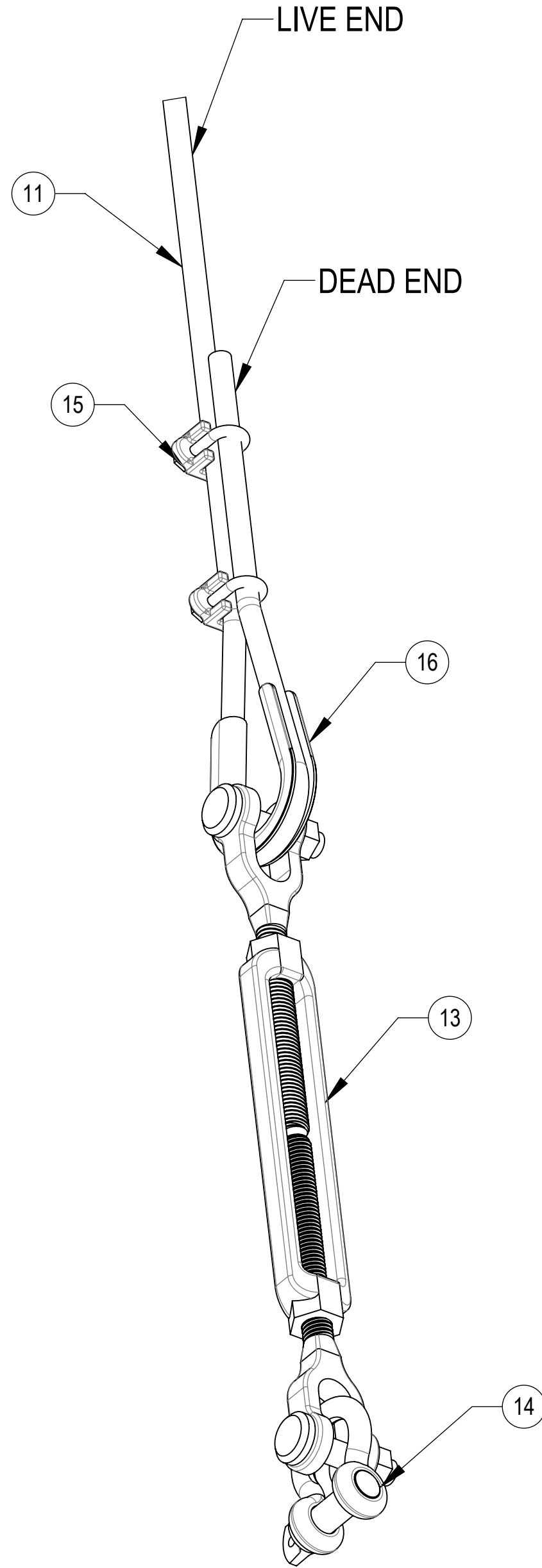
4

3


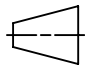
2

1

- NOTES:
1. WIRE ROPE TURN-BACK SHOULD BE 6 1/2" MINIMUM
 2. APPLY CABLE CLAMP AS SHOWN (SADDLE ON LIVE END OF CABLE)
 3. USE TORQUE WRENCH TO TIGHTEN U-BOLT EVENLY TO 45LB/FT.
 4. CABLE CLIPS SHOULD BE 1" FROM END AND 1" FROM THIMBLE.



DETAIL A
SCALE 1 : 2

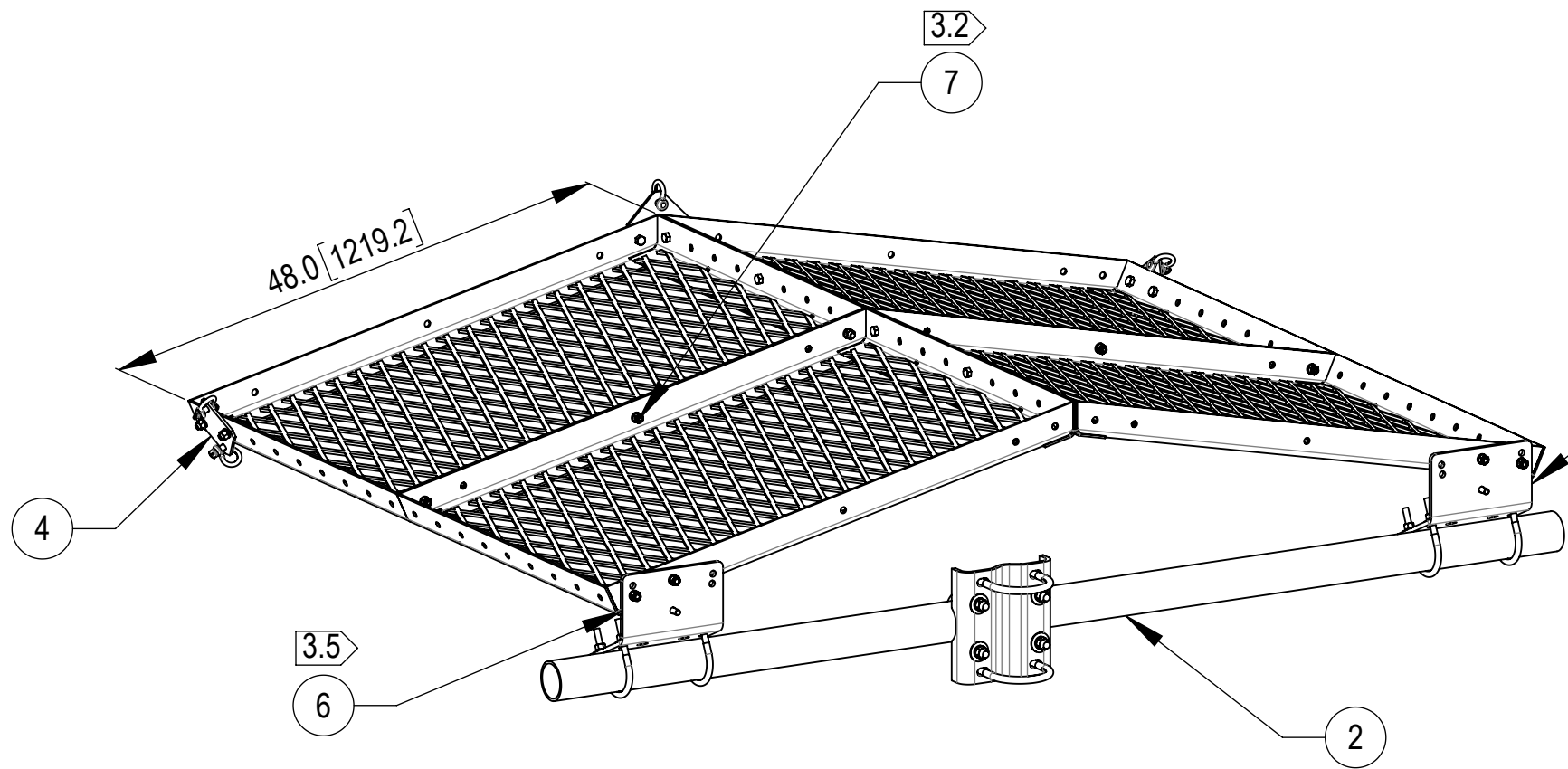
COMMSCOPE, INC. OF NORTH CAROLINA					
TITLE MICROWAVE DISH SHIELD, 6' ANTENNA					
SIZE C	SCALE 1:50	DOCUMENT NO. MD-S6			
 		DRAWING			SHEET 2 OF 3
		VERSION 01	STATUS RE	REVISION L	

4

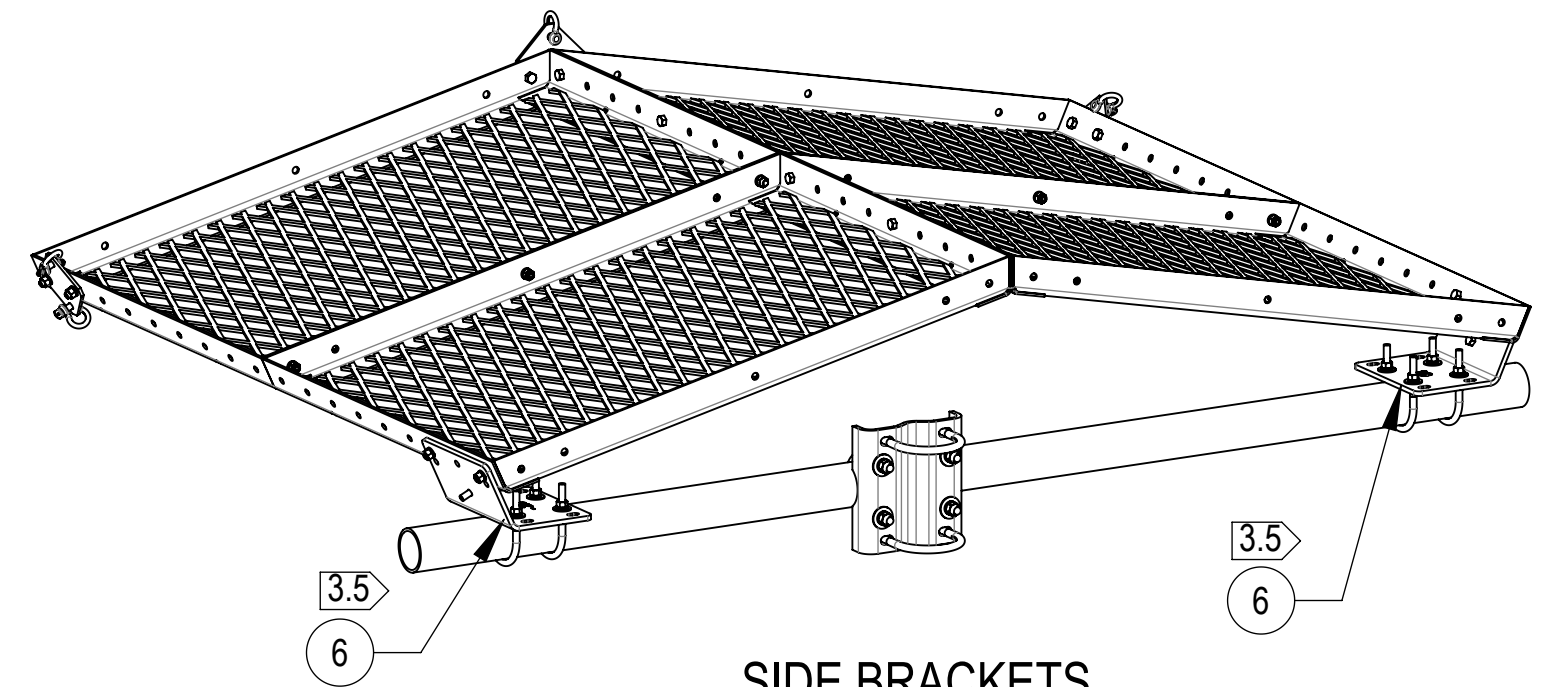
3

2

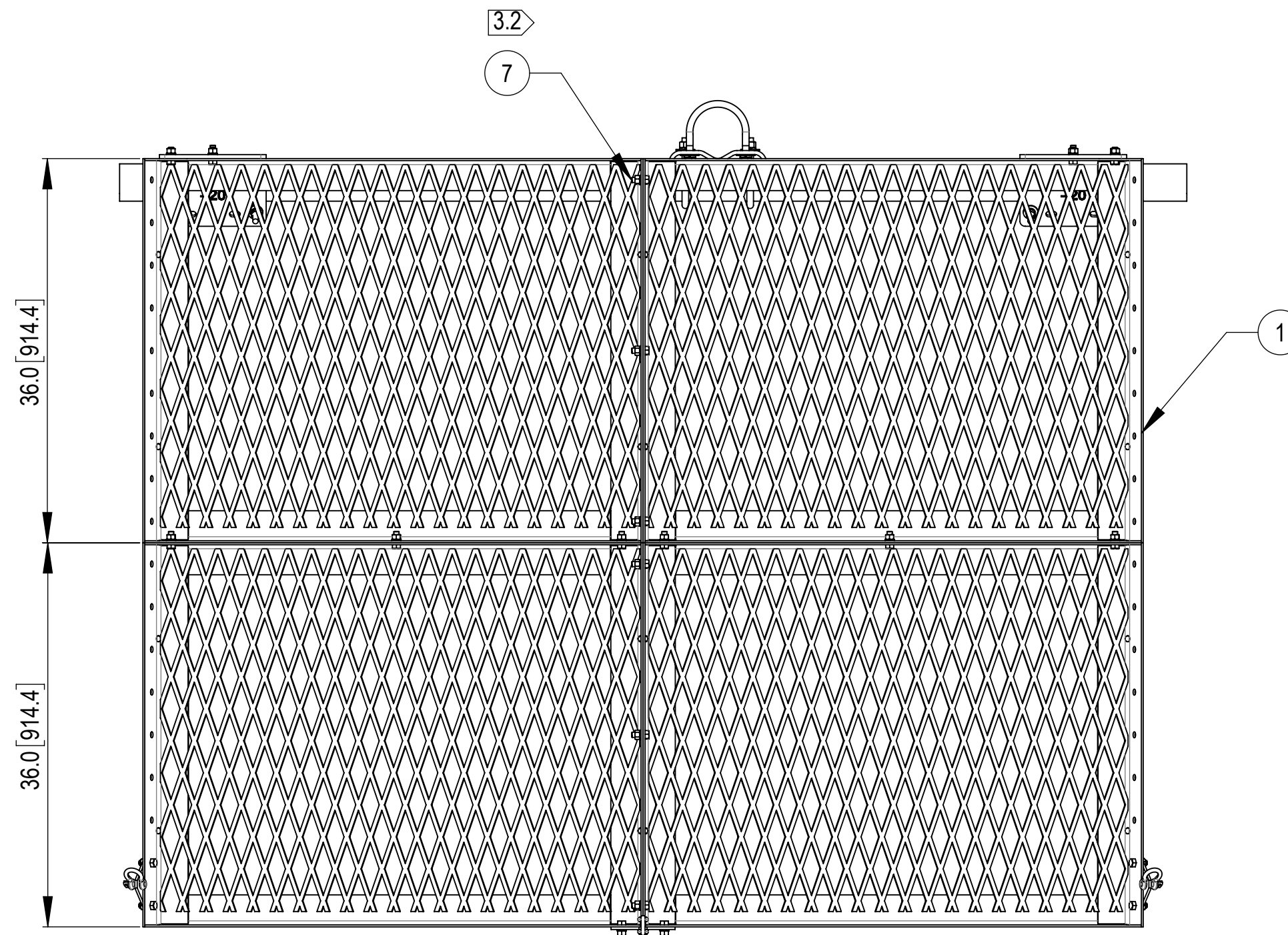
1


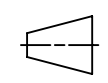


REAR BRACKETS



SIDE BRACKETS



COMMSCOPE, INC. OF NORTH CAROLINA					
TITLE MICROWAVE DISH SHIELD, 6' ANTENNA					
SIZE C	SCALE 1:50	DOCUMENT NO. MD-S6			
 		DRAWING			SHEET 3 OF 3
		VERSION 01	STATUS RE	REVISION L	