

RRV4-65S-R4N43



12-port sector antenna, 4x 694–960MHz 8deg fixed tilt and 8x 1695–2690 MHz, 65° HPBW, 4x RET

- Sleek & Smallest Form Factor: Designed for maximum efficiency and space-saving installation
- Symmetrical Low & Mid Band Arrays: Deliver consistent electrical performance and support 4T4R (4x MIMO) on both Low and Mid bands
- Optimized Antenna Shape: Minimize wind load for the enhanced stability and durability

General Specifications

Antenna Type	Sector
Band	Multiband
Grounding Type	RF connector inner conductor and body grounded to reflector and mounting bracket
Performance Note	Outdoor usage
RF Connector Interface	4.3-10 Female
RF Connector Location	Bottom
RF Connector Quantity, high band	0
RF Connector Quantity, mid band	8
RF Connector Quantity, low band	4
RF Connector Quantity, total	12

Remote Electrical Tilt (RET) Information

RET Hardware	CommRET v2
RET Interface	8-pin DIN Female 8-pin DIN Male
RET Interface, quantity	1 female 1 male
Input Voltage	10–30 Vdc
Internal RET	Mid band (4)
Power Consumption, active state, maximum	8 W
Power Consumption, idle state, maximum	1 W
Protocol	3GPP/AISG 2.0

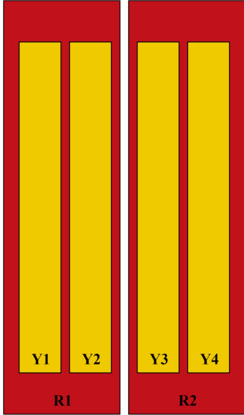
Dimensions

Width	430 mm 16.929 in
--------------	--------------------

RRV4-65S-R4N43

Depth	197 mm 7.756 in
Length	600 mm 23.622 in
Net Weight, antenna only	12.3 kg 27.117 lb

Array Layout

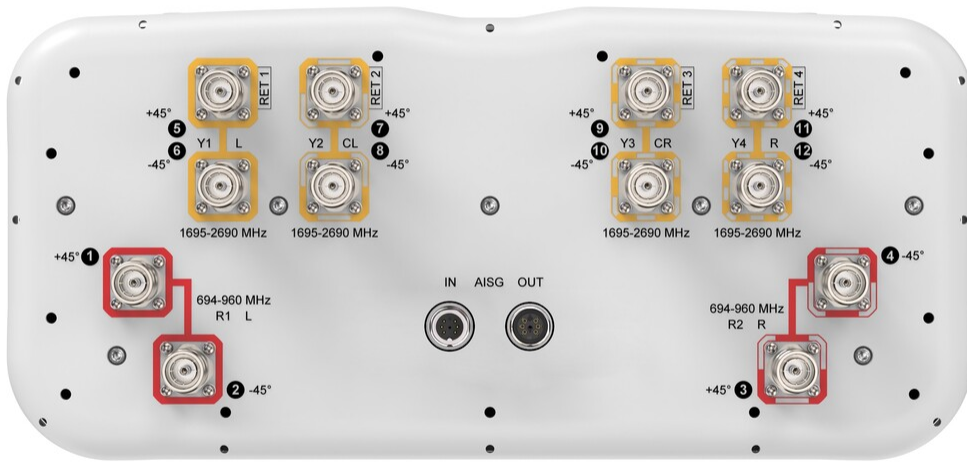


Array ID	Frequency (MHz)	RF Connector	RET (N/A)	AISG No.	RET UID
R1	694-960	1 - 2	N/A	NA	N/A
R2	694-960	3 - 4			
Y1	1695-2690	5 - 6	1	AISG1	CPxxxxxxxxxxxxxxY1
Y2	1695-2690	7 - 8	2	AISG1	CPxxxxxxxxxxxxxxY2
Y3	1695-2690	9 - 10	3	AISG1	CPxxxxxxxxxxxxxxY3
Y4	1695-2690	11 - 12	4	AISG1	CPxxxxxxxxxxxxxxY4

(Sizes of colored boxes are not true depictions of array sizes)

Port Configuration

RRV4-65S-R4N43



Electrical Specifications

Impedance	50 ohm
Operating Frequency Band	1695 – 2690 MHz 694 – 960 MHz
Polarization	±45°
Total Input Power, maximum	800 W @ 50 °C

Electrical Specifications

	R1-R2	R1-R2	R1-R2	Y1-Y4	Y1-Y4	Y1-Y4	Y1-Y4
Frequency Band, MHz	698–806	790–894	890–960	1695–1995	1920–2300	2300–2500	2490–2690
RF Port	1-4	1-4	1-4	5-12	5-12	5-12	5-12
Gain at Mid Tilt, dBi	9.5	9.8	9.7	12.9	12.7	14.3	14.7
Beamwidth, Horizontal,	84	73	71	75	70	60	59

RRV4-65S-R4N43

degrees

Beamwidth, Vertical, degrees	39	36	35	17	15.2	13.4	12.5
Beam Tilt, degrees	8	8	8	2-12	2-12	2-12	2-12
Front-to-Back Ratio at 180°, dB	26	26	26	30	30	30	30
Isolation, Cross Polarization, dB	22	22	22	22	22	22	22
Isolation, Inter-band, dB	22	22	22	22	22	22	22
VSWR Return loss, dB	1.5 14.0	1.5 14.0	1.5 14.0	1.5 14.0	1.5 14.0	1.5 14.0	1.5 14.0
PIM, 3rd Order, 2 x 20 W, dBc	-150	-150	-150	-150	-150	-150	-150
Input Power per Port at 50°C, maximum, watts	150	150	150	150	150	150	150

Mechanical Specifications

Wind Loading @ Velocity, frontal	130.0 N @ 150 km/h (29.2 lbf @ 150 km/h)
Wind Loading @ Velocity, lateral	63.0 N @ 150 km/h (14.2 lbf @ 150 km/h)
Wind Loading @ Velocity, maximum	196.0 N @ 150 km/h (44.1 lbf @ 150 km/h)
Wind Loading @ Velocity, rear	83.0 N @ 150 km/h (18.7 lbf @ 150 km/h)
Wind Speed, maximum	241 km/h (150 mph)

Packaging and Weights

Width, packed	530 mm 20.866 in
Depth, packed	349 mm 13.74 in
Length, packed	765 mm 30.118 in
Weight, gross	22 kg 48.502 lb

Regulatory Compliance/Certifications

Agency	Classification
CHINA-ROHS	Below maximum concentration value
ISO 9001:2015	Designed, manufactured and/or distributed under this quality management system
REACH-SVHC	Compliant as per SVHC revision on www.commscope.com/ProductCompliance
ROHS	Compliant
UK-ROHS	Compliant



RRV4-65S-R4N43

Included Products

- BSAMNT-3 – Wide Profile Antenna Downtilt Mounting Kit for 2.4 - 4.5 in (60 - 115 mm) OD round members. Kit contains one scissor top bracket set and one bottom bracket set.

* Footnotes

Performance Note Severe environmental conditions may degrade optimum performance

BSAMNT-3



Wide Profile Antenna Downtilt Mounting Kit for 2.4 - 4.5 in (60 - 115 mm) OD round members. Kit contains one scissor top bracket set and one bottom bracket set.

Product Classification

Product Type Downtilt mounting kit

General Specifications

Application Outdoor

Color Silver

Dimensions

Compatible Diameter, maximum 115 mm | 4.528 in

Compatible Diameter, minimum 60 mm | 2.362 in

Weight, net 6.2 kg | 13.669 lb

Material Specifications

Material Type Galvanized steel

Packaging and Weights

Included Brackets | Hardware

Packaging quantity 1

Weight, gross 6.4 kg | 14.11 lb

Regulatory Compliance/Certifications

Agency	Classification
CE	Compliant with the relevant CE product directives
CHINA-ROHS	Below maximum concentration value
ISO 9001:2015	Designed, manufactured and/or distributed under this quality management system
REACH-SVHC	Compliant as per SVHC revision on www.commscope.com/ProductCompliance
ROHS	Compliant
UK-ROHS	Compliant

BSAMNT-3

