

# RRV4-65S-R4N43



12-port sector antenna, 4x 694–960MHz 8deg fixed tilt and 8x 1695–2690 MHz, 65° HPBW, 4x RET

- Sleek & Smallest Form Factor: Designed for maximum efficiency and space-saving installation
- Symmetrical Low & Mid Band Arrays: Deliver consistent electrical performance and support 4T4R (4x MIMO) on both Low and Mid bands
- Optimized Antenna Shape: Minimize wind load for the enhanced stability and durability

## General Specifications

<b>Antenna Type</b>	Sector
<b>Band</b>	Multiband
<b>Grounding Type</b>	RF connector inner conductor and body grounded to reflector and mounting bracket
<b>Performance Note</b>	Outdoor usage
<b>RF Connector Interface</b>	4.3-10 Female
<b>RF Connector Location</b>	Bottom
<b>RF Connector Quantity, mid band</b>	8
<b>RF Connector Quantity, low band</b>	4
<b>RF Connector Quantity, total</b>	12

## Remote Electrical Tilt (RET) Information

<b>RET Hardware</b>	CommRET v2
<b>RET Interface</b>	8-pin DIN Female   8-pin DIN Male
<b>RET Interface, quantity</b>	1 female   1 male
<b>Input Voltage</b>	10–30 Vdc
<b>Internal RET</b>	Mid band (4)
<b>Power Consumption, active state, maximum</b>	8 W
<b>Power Consumption, idle state, maximum</b>	1 W
<b>Protocol</b>	3GPP/AISG 2.0

## Dimensions

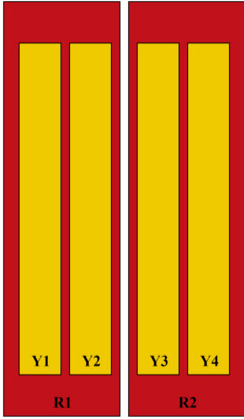
<b>Width</b>	430 mm   16.929 in
<b>Depth</b>	197 mm   7.756 in

# RRV4-65S-R4N43

**Length** 600 mm | 23.622 in

**Net Weight, antenna only** 12.3 kg | 27.117 lb

## Array Layout

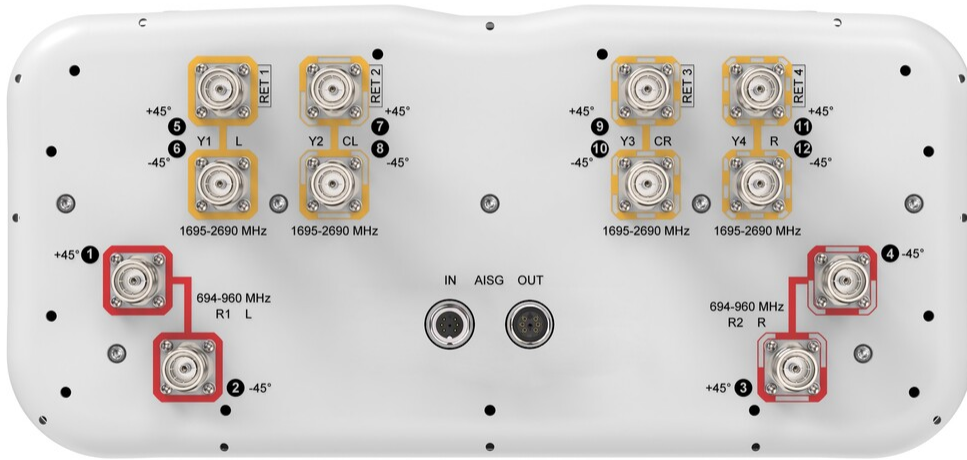


Array ID	Frequency (MHz)	RF Connector	RET (N/A)	AISG No.	RET UID
R1	694-960	1 - 2	N/A	NA	N/A
R2	694-960	3 - 4			
Y1	1695-2690	5 - 6	1	AISG1	CPxxxxxxxxxxxxxxxxY1
Y2	1695-2690	7 - 8	2	AISG1	CPxxxxxxxxxxxxxxxxY2
Y3	1695-2690	9 - 10	3	AISG1	CPxxxxxxxxxxxxxxxxY3
Y4	1695-2690	11 - 12	4	AISG1	CPxxxxxxxxxxxxxxxxY4

(Sizes of colored boxes are not true depictions of array sizes)

## Port Configuration

# RRV4-65S-R4N43



## Electrical Specifications

<b>Impedance</b>	50 ohm
<b>Operating Frequency Band</b>	1695 – 2690 MHz   694 – 960 MHz
<b>Polarization</b>	±45°
<b>Total Input Power, maximum</b>	800 W @ 50 °C

## Electrical Specifications

	R1-R2	R1-R2	R1-R2	Y1-Y4	Y1-Y4	Y1-Y4	Y1-Y4
<b>Frequency Band, MHz</b>	698–806	790–894	890–960	1695–1995	1920–2300	2300–2500	2490–2690
<b>RF Port</b>	1-4	1-4	1-4	5-12	5-12	5-12	5-12
<b>Gain at Mid Tilt, dBi</b>	9.5	9.8	9.7	12.9	12.7	14.3	14.7
<b>Beamwidth, Horizontal,</b>	84	73	71	75	70	60	59

# RRV4-65S-R4N43

## degrees

<b>Beamwidth, Vertical, degrees</b>	39	36	35	17	15.2	13.4	12.5
<b>Beam Tilt, degrees</b>	8	8	8	2-12	2-12	2-12	2-12
<b>Front-to-Back Ratio at 180°, dB</b>	26	26	26	30	30	30	30
<b>Isolation, Cross Polarization, dB</b>	22	22	22	22	22	22	22
<b>Isolation, Inter-band, dB</b>	22	22	22	22	22	22	22
<b>VSWR   Return loss, dB</b>	1.5 14.0	1.5 14.0	1.5 14.0	1.5 14.0	1.5 14.0	1.5 14.0	1.5 14.0
<b>PIM, 3rd Order, 2 x 20 W, dBc</b>	-150	-150	-150	-150	-150	-150	-150
<b>Input Power per Port at 50°C, maximum, watts</b>	150	150	150	150	150	150	150

## Mechanical Specifications

<b>Wind Loading @ Velocity, frontal</b>	130.0 N @ 150 km/h (29.2 lbf @ 150 km/h)
<b>Wind Loading @ Velocity, lateral</b>	63.0 N @ 150 km/h (14.2 lbf @ 150 km/h)
<b>Wind Loading @ Velocity, maximum</b>	196.0 N @ 150 km/h (44.1 lbf @ 150 km/h)
<b>Wind Loading @ Velocity, rear</b>	83.0 N @ 150 km/h (18.7 lbf @ 150 km/h)
<b>Wind Speed, maximum</b>	241 km/h (150 mph)

## Packaging and Weights

<b>Width, packed</b>	530 mm   20.866 in
<b>Depth, packed</b>	349 mm   13.74 in
<b>Length, packed</b>	765 mm   30.118 in
<b>Weight, gross</b>	22 kg   48.502 lb

## Regulatory Compliance/Certifications

<b>Agency</b>	<b>Classification</b>
ISO 9001:2015	Designed, manufactured and/or distributed under this quality management system
UK-ROHS	Compliant/Exempted

## Included Products

BSAMNT-3	-	Wide Profile Antenna Downtilt Mounting Kit for 2.4 - 4.5 in (60 - 115 mm) OD round members. Kit contains one scissor top bracket set and one bottom bracket set.
----------	---	--

## \* Footnotes

# RRV4-65S-R4N43

---

**Performance Note** Severe environmental conditions may degrade optimum performance