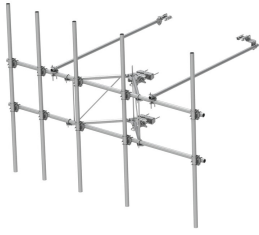


# SFG22HDX-15-5-WLL



G22HDX Tower Sector Frame with extended face, 15 ft x 2.88 in OD face pipes. Base Kit Only. Includes five 2.88 OD x 120 in antenna pipes

## Product Classification

<b>Product Type</b>	High capacity Tower sector frame
<b>Product Brand</b>	PIM-guard
<b>Product Series</b>	G2

## General Specifications

<b>Mounting</b>	Angle 60°, 203.2 mm (8 in)   Straight or tapered legs up to 203.2 mm (8 in) OD
<b>Pipe, quantity</b>	5
<b>Sectors, quantity</b>	1
<b>Tower Taper</b>	Non-tapered   Tapered

## Dimensions

<b>Face Width</b>	4.572 m   15 ft
<b>Width</b>	4,572 mm   180 in
<b>Face Support Pipe Diameter</b>	73.025 mm   2.875 in
<b>Mounting Diameter, maximum</b>	218.44 mm   8.6 in
<b>Mounting Diameter, minimum</b>	38.1 mm   1.5 in
<b>Pipe Outer Diameter</b>	73.025 mm   2.875 in
<b>Stand-off Distance</b>	1,066.8 mm   42 in

## Material Specifications

<b>Material Type</b>	Hot dip galvanized steel
----------------------	--------------------------

## Mechanical Specifications

<b>Wind Rating</b>	For Specifications, please contact <a href="mailto:steelproducts@commscope.com">steelproducts@commscope.com</a> or call 800-255-1479
--------------------	--

## Packaging and Weights

<b>Included</b>	Frame   Plain end pipes   Stiff arms (2)   Tower attachment
-----------------	---

# SFG22HDX-15-5-WLL

---

**Packaging quantity** 1  
**Weight, net** 379.707 kg | 837.11 lb

\* Footnotes

**Wind Rating** BWS—Base Wind Speed; FBC—Florida Building Code