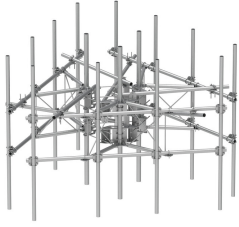


# MCG22RHDX-13M12120



G22RHDX Monopole Sector Frame with spine extension for RRU Mounting, 13 ft x 2.88 in OD face pipes. includes twelve 2.88 OD x 120 in antenna pipes

- Extended spine for MCG22 RHDX mounts that decrease PIM from radio relocation
- Increased versatility and stability
- Updated frame provides higher loading
- More RRU mounting available, reducing need for additional mounts
- Better load management
- Less structure stress
- Can be used in combination with APEX RRU mounts

## Product Classification

<b>Product Type</b>	High capacity monopole sector frame
<b>Product Brand</b>	PIM-guard
<b>Product Series</b>	G2

## General Specifications

<b>Mounting</b>	Monopole, 381–1270 mm (15–50 in) OD
<b>Pipe, quantity</b>	12
<b>Sectors, quantity</b>	3

## Dimensions

<b>Face Width</b>	3,962 mm   13 ft
<b>Platform Width</b>	3,962.4 mm   156 in
<b>Pipe Length</b>	3,048 mm   120 in
<b>Face Support Pipe Diameter</b>	73.025 mm   2.875 in
<b>Mounting Diameter, maximum</b>	1270 mm   50 in
<b>Mounting Diameter, minimum</b>	381 mm   15 in
<b>Pipe Outer Diameter</b>	73.025 mm   2.875 in
<b>Stand-off Distance</b>	1,066.8 mm   42 in

## Material Specifications

<b>Material Type</b>	Hot dip galvanized steel
----------------------	--------------------------

# MCG22RHDX-13M12120

---

## Mechanical Specifications

<b>Wind Rating</b>	For Specifications, please contact <a href="mailto:steelproducts@commscope.com">steelproducts@commscope.com</a> or call 800-255-1479
<b>Wind Rating Test Method</b>	TIA/EIA-222

## Packaging and Weights

<b>Included</b>	Mounting hardware   Plain end pipes (12)   Ring mounts (2)   Sector frames (3)   Stiff arm
<b>Packaging quantity</b>	1
<b>Weight, net</b>	1,056.78 kg   2,329.8 lb

## Regulatory Compliance/Certifications

<b>Agency</b>	<b>Classification</b>
CHINA-ROHS	Above maximum concentration value
ROHS	Compliant/Exempted
UK-ROHS	Compliant/Exempted



## \* Footnotes

<b>Wind Rating</b>	BWS—Base Wind Speed; FBC—Florida Building Code
--------------------	--