

# RRVV-65D-R6D



8-port sector antenna, 4x 694–960, 4x 1695–2180/ 2490–2690 MHz,  
65° HPBW , 6x RET

- All Internal RET actuators are connected in “Cascaded SRET” configuration
- Internal SBT on low and high band allow remote RET control from the radio over the RF jumper cable
- Utilize new aerodynamic endcap for wind load optimization

## General Specifications

<b>Antenna Type</b>	Sector
<b>Band</b>	Multiband
<b>Color</b>	Light Gray (RAL 7035)
<b>Grounding Type</b>	RF connector inner conductor and body grounded to reflector and mounting bracket
<b>Performance Note</b>	Outdoor usage
<b>Radome Material</b>	Fiberglass, UV resistant
<b>Reflector Material</b>	Aluminum
<b>RF Connector Interface</b>	4.3-10 Female
<b>RF Connector Location</b>	Bottom
<b>RF Connector Quantity, high band</b>	4
<b>RF Connector Quantity, low band</b>	4
<b>RF Connector Quantity, total</b>	8

## Remote Electrical Tilt (RET) Information

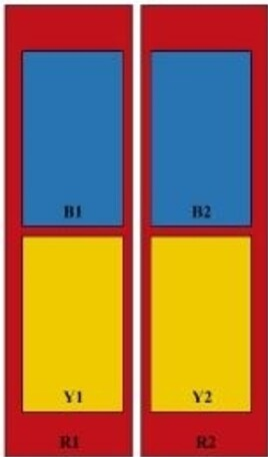
<b>RET Hardware</b>	CommRET v2
<b>RET Interface</b>	8-pin DIN Female   8-pin DIN Male
<b>RET Interface, quantity</b>	2 female   2 male
<b>Input Voltage</b>	10–30 Vdc
<b>Internal Bias Tee</b>	Port 1   Port 5
<b>Internal RET</b>	High band (4)   Low band (2)
<b>Power Consumption, active state, maximum</b>	8 W
<b>Power Consumption, idle state, maximum</b>	1 W
<b>Protocol</b>	3GPP/AISG 2.0

# RRVV-65D-R6D

## Dimensions

<b>Width</b>	498 mm   19.606 in
<b>Depth</b>	197 mm   7.756 in
<b>Length</b>	2688 mm   105.827 in
<b>Net Weight, antenna only</b>	52 kg   114.64 lb

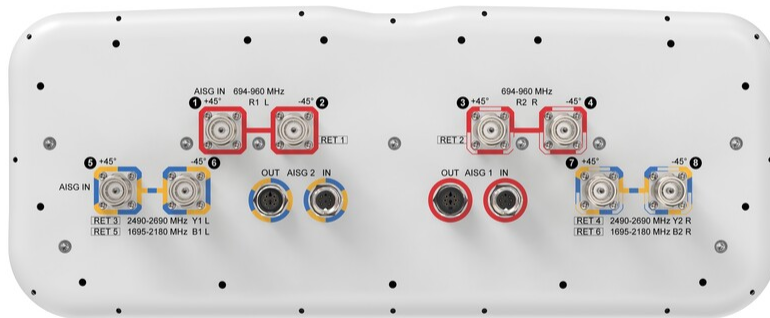
## Array Layout



Array ID	Frequency (MHz)	RF Connector	RET (SRET)	AISG No.	AISG RET UID
R1	694-960	1 - 2	1	AISG1	CPxxxxxxxxxxxxxxxxR1
R2	694-960	3 - 4	2	AISG1	CPxxxxxxxxxxxxxxxxR2
Y1	2490-2690	5 - 6	3	AISG2	CPxxxxxxxxxxxxxxxxY1
Y2	2490-2690	7 - 8	4	AISG2	CPxxxxxxxxxxxxxxxxY2
B1	1695-2180	5 - 6	5	AISG2	CPxxxxxxxxxxxxxxxxB1
B2	1695-2180	7 - 8	6	AISG2	CPxxxxxxxxxxxxxxxxB2

[Sizes of colored boxes are not true depictions of array sizes]

## Port Configuration



# RRVV-65D-R6D

## Electrical Specifications

<b>Impedance</b>	50 ohm
<b>Operating Frequency Band</b>	1695 – 2180 MHz   2490 – 2690 MHz   694 – 960 MHz
<b>Polarization</b>	±45°

## Electrical Specifications

	<b>R1,R2</b>	<b>R1,R2</b>	<b>R1,R2</b>	<b>Y1,Y2,B1,B2</b>	<b>Y1,Y2,B1,B2</b>	<b>Y1,Y2,B1,B2</b>
<b>Frequency Band, MHz</b>	<b>694–790</b>	<b>790–890</b>	<b>880–960</b>	<b>1695–1920</b>	<b>1920–2180</b>	<b>2490–2690</b>
<b>RF Port</b>	1,2,3,4	1,2,3,4	1,2,3,4	5,6,7,8	5,6,7,8	5,6,7,8
<b>Gain, dBi</b>	15.7	16.1	16.6	16.5	16.6	16.4
<b>Beamwidth, Horizontal, degrees</b>	77	67	68	58	62	68
<b>Beamwidth, Vertical, degrees</b>	7.4	6.6	6.2	6.8	6.1	5.1
<b>Beam Tilt, degrees</b>	1–11	1–11	1–11	0–10	0–10	0–10
<b>USLS (First Lobe), dB</b>	16	16	20	18	18	17
<b>Front-to-Back Ratio at 180°, dB</b>	29	30	32	34	34	25
<b>Isolation, Cross Polarization, dB</b>	26	26	26	26	26	26
<b>Isolation, Inter-band, dB</b>	28	28	28	28	28	28
<b>VSWR   Return loss, dB</b>	1.5 14.0	1.5 14.0	1.5 14.0	1.5 14.0	1.5 14.0	1.5 14.0
<b>PIM, 3rd Order, 2 x 20 W, dBc</b>	-150	-150	-150	-150	-150	-150
<b>Input Power per Port at 50°C, maximum, watts</b>	300	300	300	250	250	200

## Packaging and Weights

<b>Width, packed</b>	565 mm   22.244 in
<b>Depth, packed</b>	309 mm   12.165 in
<b>Length, packed</b>	2935 mm   115.551 in
<b>Weight, gross</b>	72.9 kg   160.717 lb

## Regulatory Compliance/Certifications

<b>Agency</b>	<b>Classification</b>
ISO 9001:2015	Designed, manufactured and/or distributed under this quality management system

# RRVV-65D-R6D

---

## Included Products

- BSAMNT-4 – Wide Profile Antenna Downtilt Mounting Kit for 2.4 - 4.5 in (60 - 115 mm) OD round members. Kit contains one scissor top bracket set and one bottom bracket set.
- BSAMNT-M4 – Middle Downtilt Mounting Kit for Long Antennas for 2.4 - 4.5 in (60 - 115 mm) OD round members. Kit contains one scissor bracket set.

## \* Footnotes

**Performance Note** Severe environmental conditions may degrade optimum performance