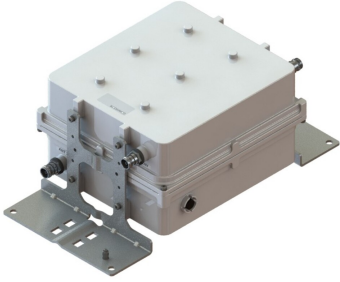


E14V00P95



CS-IMF 804-809/849-854 RJ50 788- 803

- New 4.3-10 connectors for improved PIM performance and size reduction

Product Classification

Product Type Interference mitigation filter

General Specifications

Color Gray

Modularity 2-Twin

RF Connector Interface 4.3-10 Female

RF Connector Interface Body Style Long neck

Dimensions

Height 312 mm | 12.283 in

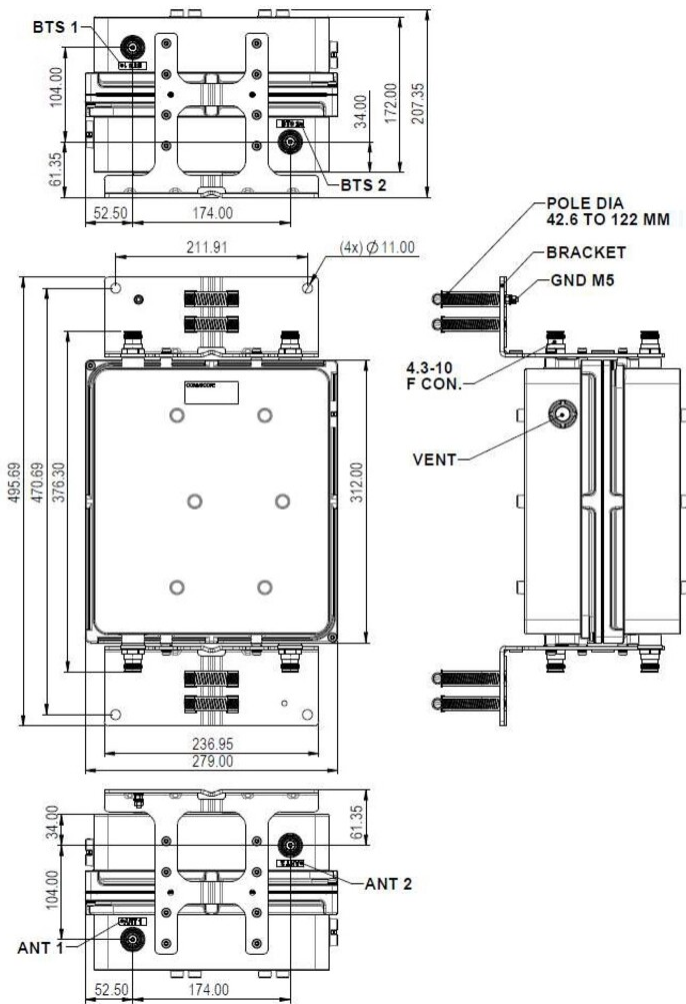
Width 279 mm | 10.984 in

Depth 172 mm | 6.772 in

Ground Screw Diameter 5 mm | 0.197 in

Outline Drawing

E14V00P95



Electrical Specifications, dc Power/Alarm

Lightning Surge Current	5 kA
Lightning Surge Current Waveform	8/20 waveform

Electrical Specifications

Sub-module	1 2	1 2
Branch	1	1

Electrical Specifications, Band Pass

Frequency Range, MHz	849–854	804–809
Insertion Loss, maximum, dB	0.4	1.15
Insertion Loss, typical, dB	0.2	0.3

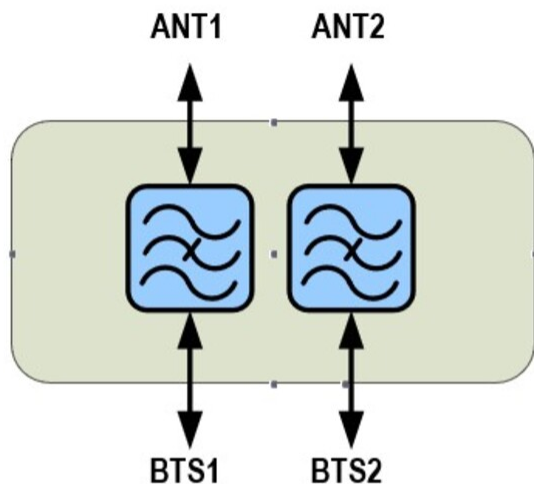
E14V00P95

Group Delay Variation, maximum, ns	5	650
Total Group Delay, maximum, ns	45	800
Total Group Delay, typical, ns	35	400
Return Loss, minimum, dB	18	18
Return Loss, typical, dB	20	20
Isolation, minimum, dB	60	60
Input Power, RMS, maximum, W	300	
Input Power, PEP, maximum, W	1500	
3rd Order PIM, maximum, dBc	-153	
3rd Order PIM, typical, dBc	-155	
3rd Order PIM Test Method	2 x 20 W CW tones	

Electrical Specifications, Band Reject

Frequency Range, MHz	788-803
Attenuation, minimum, dB	50
Attenuation, typical, dB	53

Block Diagram



Rejection Band:
788-803 MHz
**Attenuation 60 dB min/
 80dB typical**

Pass Band:
Tx 84-854 MHz
Rx 804-809 MHz

E14V00P95

Environmental Specifications

Operating Temperature	-40 °C to +60 °C (-40 °F to +140 °F)
Relative Humidity	Up to 100%
Ingress Protection Test Method	IEC 60529:2001, IP67

Packaging and Weights

Volume	12
Weight, net	18.4 kg 40.565 lb
Weight, without mounting hardware	16.2 kg 35.715 lb