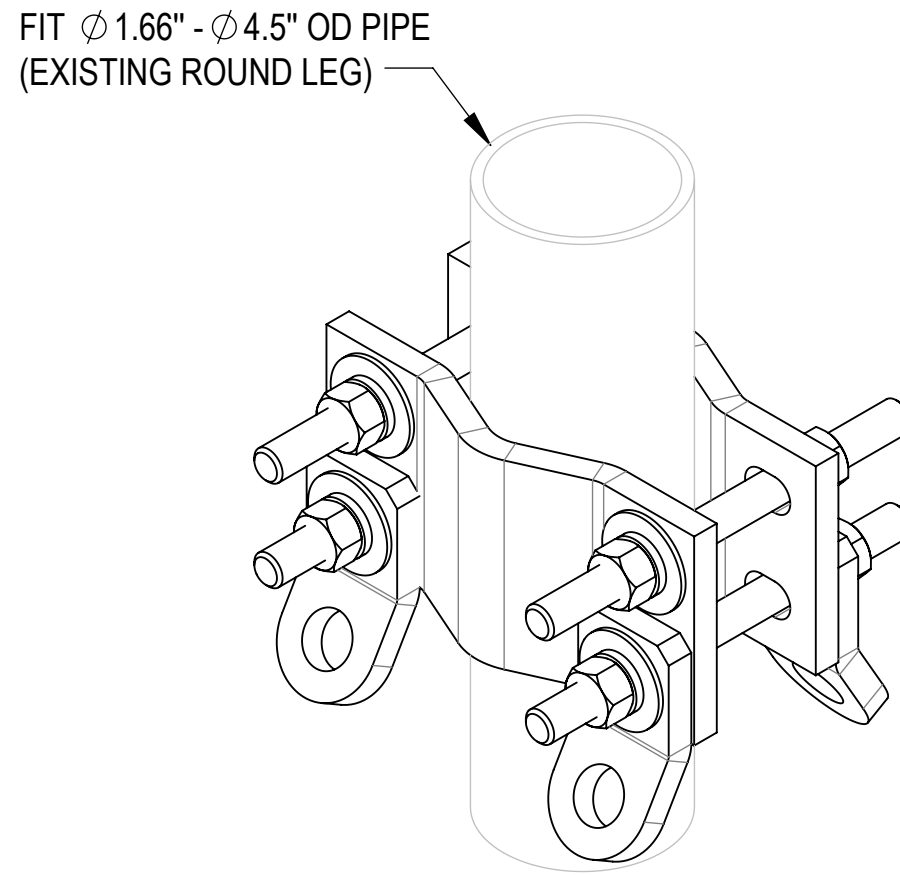
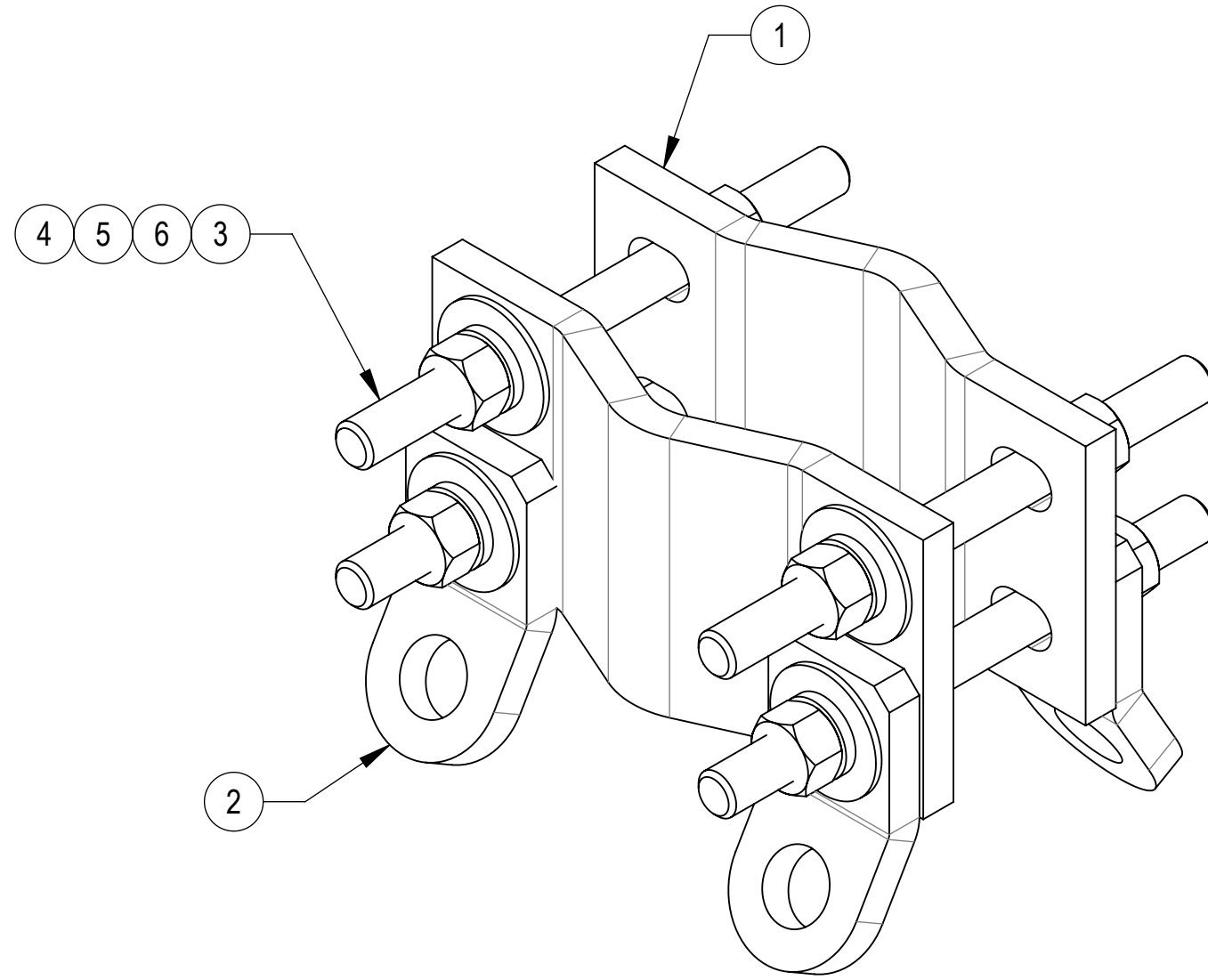
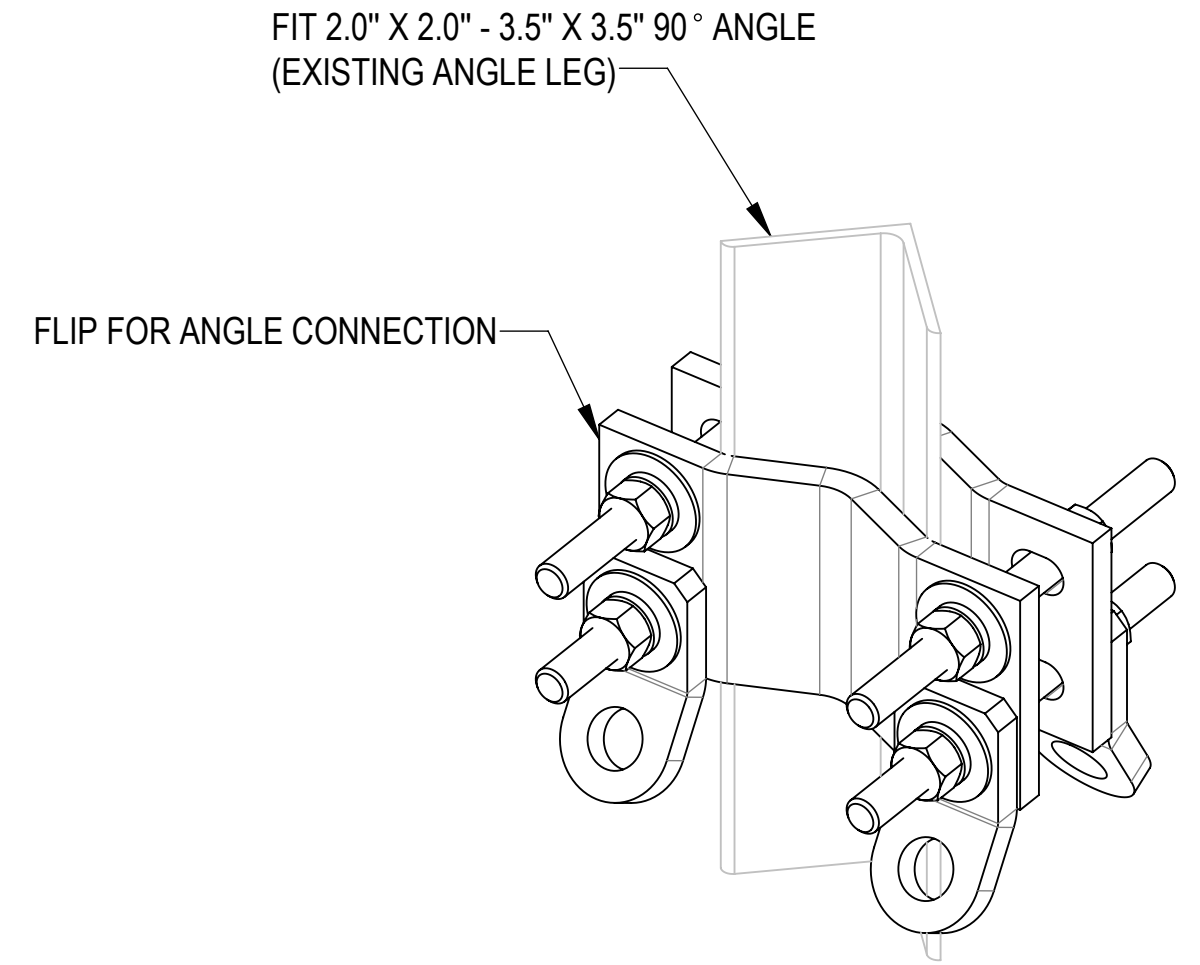


- 1.0 GENERAL NOTES
 1.1 ALL METRIC DIMENSIONS ARE IN BRACKETS [X. X]
 1.2 FOR PATENT INFO: <https://www.cs-pat.com>
 2.0 DESIGN NOTES
 3.0 MANUFACTURING/SPECIAL REQUIREMENTS
 3.1 TIGHTEN ALL BOLTS SECURING FLAT PLATES BY THE TURN-OF-NUT METHOD. TIGHTEN ALL U-BOLTS USING TURN-OF-NUT METHOD WITH ATTENTION TO LEAVE EQUAL DISTANCE AND EQUAL FORCE ON EACH LEG OF THE U-BOLT.
 4.0 TEST
 5.0 PACKAGING
 5.1 PACKAGING SHALL MEET COMMSCOPE REQUIREMENTS PER DOCUMENT IS-PL-3005
 5.2 PRINTED DOCUMENT TO BE PLACED INSIDE POLYBAG AND THEN IN SHIPPING CONTAINER
 5.3 EXTRA HARDWARE MAY BE SUPPLIED, BAGGED AND SHIPPED

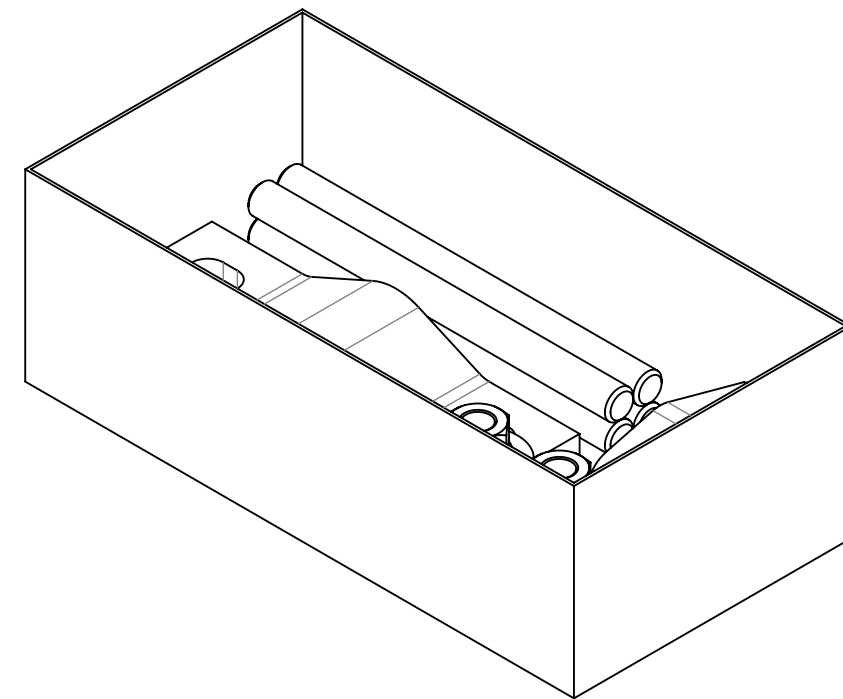
REVISIONS			
REV.	DESCRIPTION	DATE	APPROVED
A	INITIAL RELEASE	RY1002 14JAN25	WQ1001 40212528CMO
B	UPDATED THE LOADING NOTES	RY1002 04MAR25	EB1063 50101692AMO



ROUND LEG MOUNTING



ANGLE LEG MOUNTING



PACKAGE

B
 NOTE : -MAXIMUM UNFACTORED NET CABLE WEIGHT = 2000 LBS PER TAB
 -MAXIMUM UNFACTORED NET CABLE WEIGHT = 8000 LBS FOR SYSTEM

COMPONENT PART NUMBERS PROVIDED FOR ASSEMBLY PURPOSES;
 INDIVIDUAL COMPONENTS MAY BE SHIPPED AS PARTS WITHIN AN INCLUDED KIT.

ITEM	PART NO.	DESCRIPTION	QTY.	WEIGHT	NOTE NO.
1	DC-P10D	DUAL HALF CLAMP, 2-3/8" TO 5"	2	4.42 LBS	
2	MTC4206-1000-00	TIE-OFF ANCHOR BRACKET BENT PLATE	4	0.96 LBS	
3	MT-381-8	5/8" X 8" GALV THREADED ROD	4	0.69 LBS	
4	GN-05	5/8" GALV HEX NUT	8	0.08 LBS	
5	GWL-05	5/8" GALV LOCK WASHER	8	0.03 LBS	
6	GWF-05	5/8" GALV FLAT WASHER, 1.7OD	8	0.06 LBS	

DENSITY	16.76	lbs/in ³
MASS	59.47	lbs
VOLUME	398.71	in ³
SURFACE AREA	6.2"	in ²
HEIGHT	8.1"	
LENGTH	8.0"	
WIDTH		

© 2025 CommScope, Inc. Confidential

COMMSCOPE, INC. OF NORTH CAROLINA									
TOLERANCES					SAP MATERIAL MASTER				
1 PLACE .X[X] ± 0.2[6.3]		3 PLACE .XXX[X] ± 0.060[1.5]			860680188-004				
2 PLACE .XX[X] ± 0.12[3.0]		ANGLES ± 2°							
FINISH					MATERIAL				
UNLESS OTHERWISE SPECIFIED DIMENSIONS ARE IN INCHES INTERPRET PER ANSI Y 14.5M-1994	CE	RY1002	15JAN25	TITLE					
	RW	RY1002	03/03/2025	GRIP ANCHOR, 1.66-4.5"OD 4 TABS					
	AD	WQ1001	03/04/2025	SCALE		DOCUMENT NO.			
	RE	YMENG	03/04/2025	1:2		860680188-004			
	ECN 50101692AMO								
SIZE	Auth Group	INSL	MODEL			DRAWING			
C			VERSION	STATUS	REVISION	VERSION	STATUS	REVISION	SHEET
			00	RE	A	01	RE	B	1 OF 1