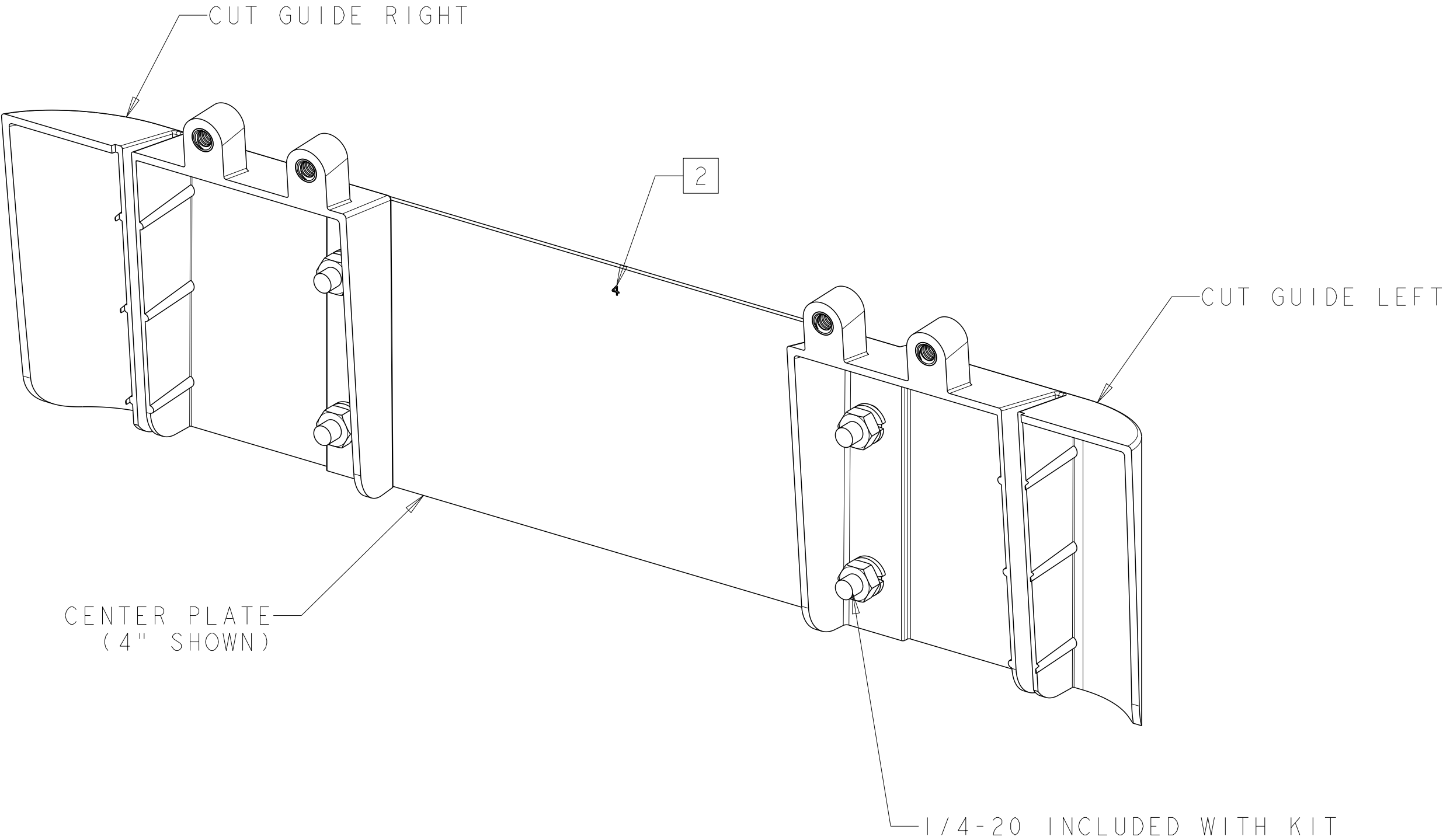


REVISIONS			
REV	CMO	DATE	APPROVED
A	40215310CMO	02-APR-2025	GVR



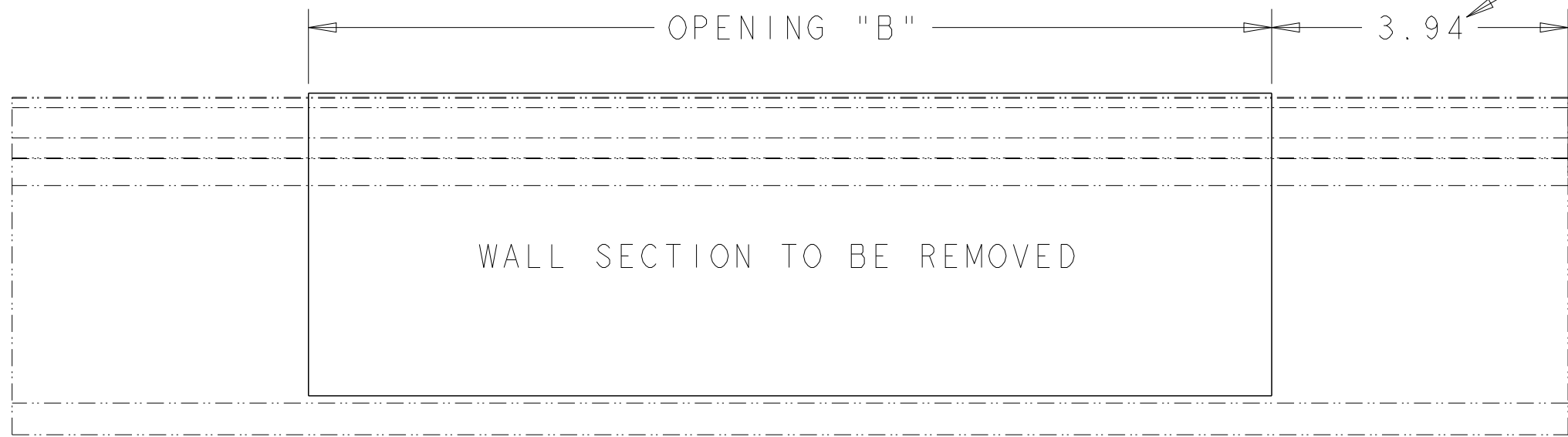
NOTES:

- 1 KIT CONTAINS: RIGHT & LEFT CUT IN GUIDES, (3) CENTER PLATES, RIGHT & LEFT CUT IN BRACKETS, (4 EA.) MOUNTING HARDWARE.
- 2 PRIOR TO INSTALLATION, SELECT AND INSTALL THE APPROPRIATE CENTER PLATE BASED FITTING SIZE. NOTE THE NUMBER STAMPED ON THE CENTER PLATE, MATCHES THE FITTING TROUGH SIZE. THE NUMBER (4, 6 OR 12) MUST BE ORIENTATED TO THE TOP FOR PROPER FIT WHEN INSTALLED IN THE TROUGH.
- 3 LAYOUT AREA TO BE REMOVED, "OPENING B" DIMENSION IS LOCATED ON THE INSTALLATION DRAWING. MARK THE CUT WIDTH ON THE UPPER PORTION OF THE TROUGH, TO AID IN ALIGNING CUT IN JIG.
- 4 INSTALL CUT IN JIG INTO THE INTERIOR OF THE TROUGH. "CAUTION" WITH FIBERS, MAY HAVE "LIVE" TRAFFIC. INSTALL LEFT AND RIGHT CUT IN BRACKETS AND LOOSELY ATTACH TO INTERIOR JIG WITH CAPTIVE HARDWARE.
- 5 WITH FIXTURE CORRECTLY ALIGNED AND SECURE, MAKE A VERTICAL CUT WITH A HACKSAW ON THE OUTER EXTERIOR EDGES OF EACH CUT IN FIXTURE BRACKET. "CAUTION" CUT SHOULD GO NO FURTHER THAN THE BLADE STOP EDGES.
- 6 WITH VERTICAL CUTS COMPLETE, TAKING APPROPERiate CAUTION WITH FIBERS, REMOVE CUT IN JIG. SCORE, WITH A UTILITY KNIFE 10 TIMES ALONG THE HORIZONTAL EDGE, CUT SHOULD BE FLUSH TO THE EXTERIOR SURFACE OF THE "T" RAIL CHANNEL ON BACK.

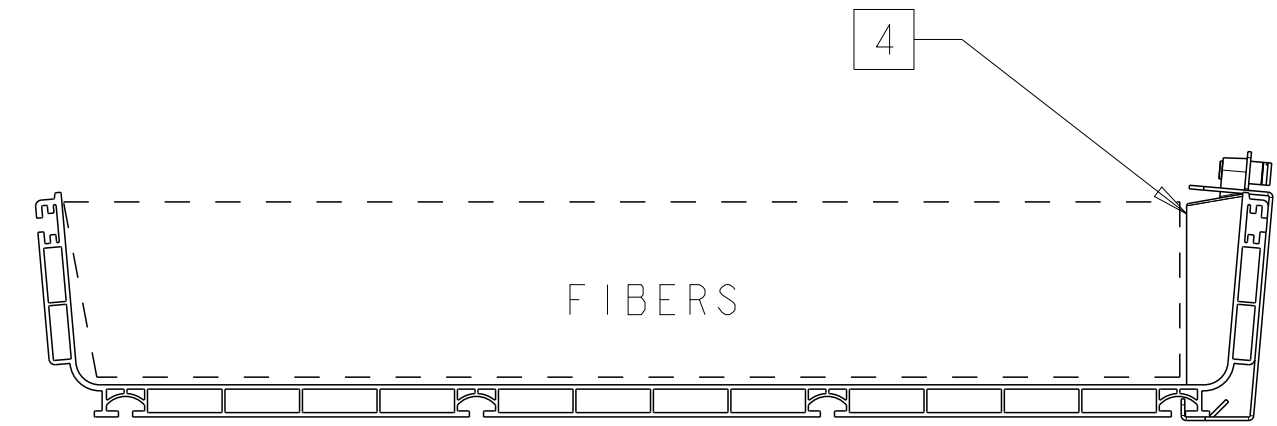
FGS-MHIS-JIG-M/H

CATALOG NUMBER

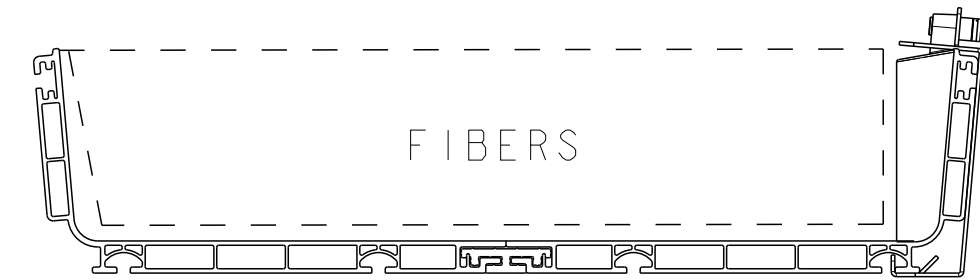
COMMSCOPE, INC.				
DRAFTER GILBERTO VILLA		TITLE HORZ CUT IN 4X18,4X24 INST DWG		
ENGINEER RUBEN ARVILLA		SIZE A2	SCALE 1/16	DOCUMENT NO. 660106552
		CUSTOMER DRAWING		REVISION A
				SHEET 1 OF 2



WALL SECTION LAYOUT **3**

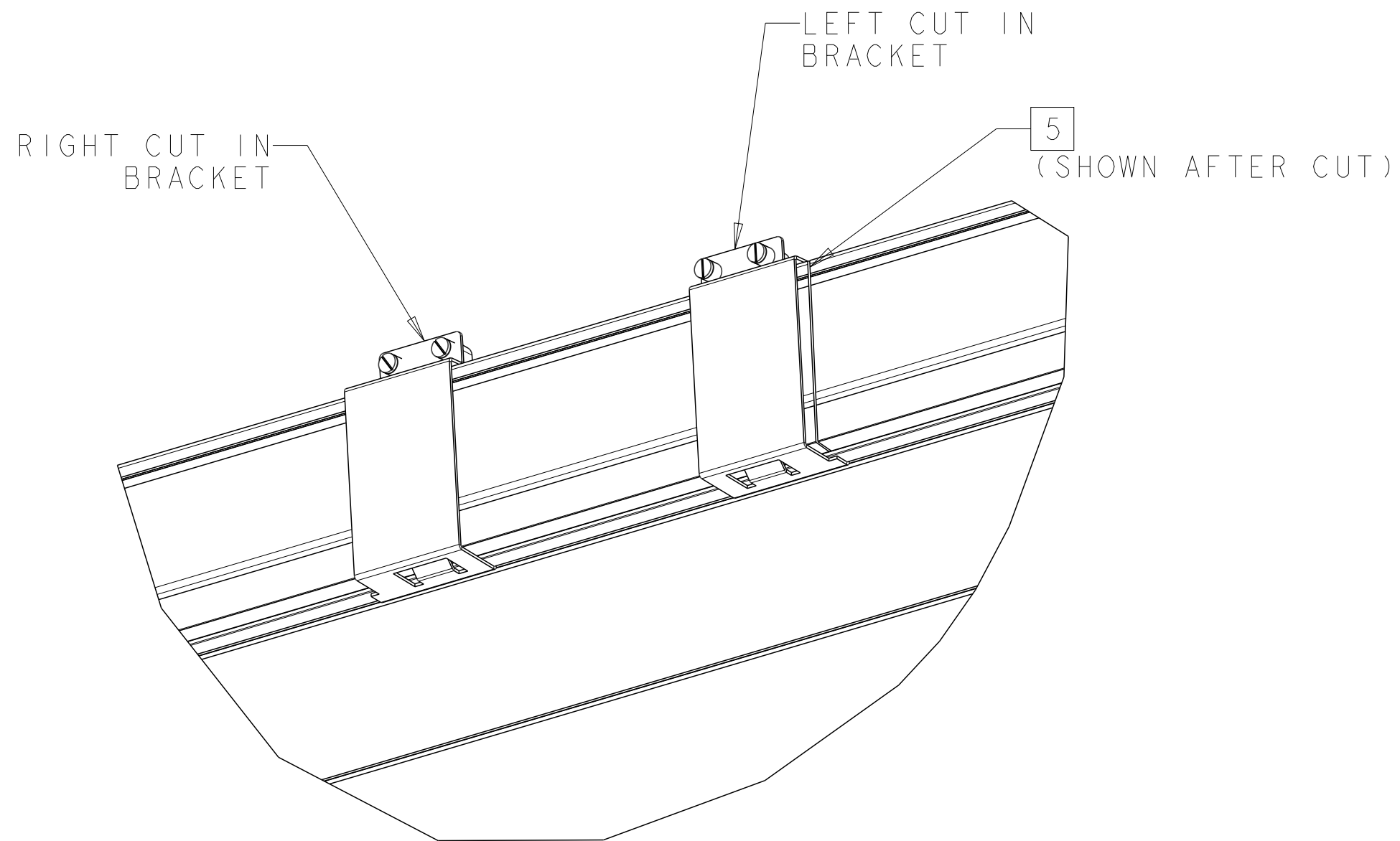


STRAIGHT SECTION REF 4X24

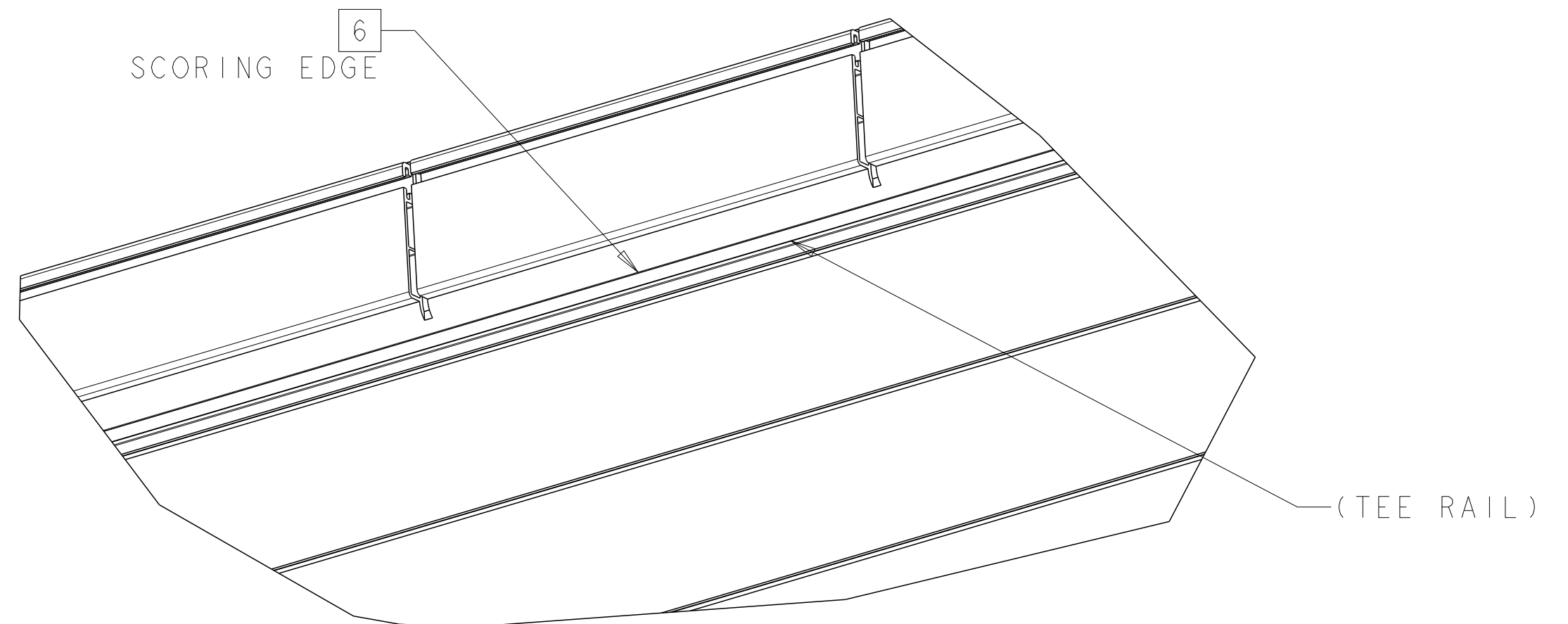


STRAIGHT SECTION REF 4X18

FIXTURE INSTALLATION **4**



VERTICAL CUTS **5**



HORIZONTAL CUTS **6**

COMMSCOPE, INC.				
DRAFTER GILBERTO VILLA	TITLE HORZ CUT IN 4X18,4X24 INST DWG			
ENGINEER RUBEN ARVILLA	SIZE A2	SCALE 1/16	DOCUMENT NO. 660106552	
			REVISION A	SHEET 2 OF 2
			CUSTOMER DRAWING	