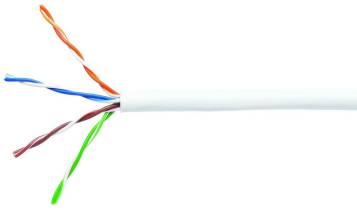


6-219590-2 | CS24CM WHT C5E 4/24 U/UTP CPK 305M



Copper Cable, category 5e, 4 pair, U/UTP, CM rated, 24 AWG, 1000 ft, white

Product Classification

Regional Availability	Asia
Portfolio	NETCONNECT®
Product Type	Twisted pair cable
Product Series	510 Series

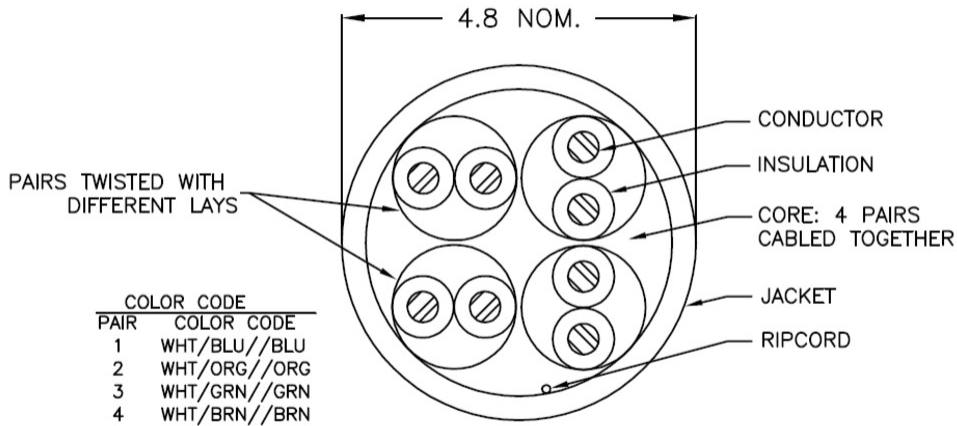
General Specifications

Product Number	510M
ANSI/TIA Category	5e
Cable Component Type	Horizontal
Cable Type	U/UTP (unshielded)
Conductor Type, singles	Solid
Conductors, quantity	8
Jacket Color	White
Pairs, quantity	4
Transmission Standards	ANSI/TIA-568.2-D GENELEC EN 50288-6-1 ISO/IEC 11801 Class D

Dimensions

Cable Length	304.8 m 1000 ft
Diameter Over Jacket, nominal	4.902 mm 0.193 in
Conductor Gauge, singles	24 AWG

Cross Section Drawing



Electrical Specifications

Operating Voltage, maximum

80 V

Remote Powering

Fully complies with the recommendations set forth by IEEE 802.3bt (Type 4) for the safe delivery of power over LAN cable when installed according to ISO/IEC 14763-2, CENELEC EN 50174-1, CENELEC EN 50174-2 or TIA TSB-184-A

Electrical Cable Performance

CS	CommScope		
STD	Refers to the standard value listed under Transmission Standards in the Electrical Specifications above		
TYP	Typical Electrical Performance		
IL	Insertion Loss (dB/100m)	NEXT	Near End Crosstalk (dB/100m)
ACR	Attenuation to Crosstalk Ratio (dB/100m)	PSNEXT	Power Sum Near End Crosstalk (db/100m)
PSACR	Power Sum Attenuation to Crosstalk Ratio (dB/100m)	ACRF	Attenuation to Crosstalk Ratio - Far End (dB/100m)
PSACRF	Power Sum Attenuation to Crosstalk Ratio - Far End (dB/100m)	RL	Return Loss (dB)
TCL	Transverse Conversion Loss (dB/100m)	ELTCTL	Equal Level Transverse Conversion Transfer Loss (dB/100m)

Freq. MHz	IL	NEXT	ACR	PSNEXT	PSACR	ACRF	PSACRF	RL
	STD	STD	STD	STD	STD	STD	STD	STD
1	2	65.3	63.3	62.3	60.3	63.8	60.8	20
4	4.1	56.3	52.2	53.3	49.2	51.8	48.8	23
8	5.8	51.8	46	48.8	43	45.7	42.7	24.5
10	6.5	50.3	43.8	47.3	40.8	43.8	40.8	25
16	8.2	47.2	39	44.2	36	39.7	36.7	25
20	9.3	45.8	36.5	42.8	33.5	37.8	34.8	25
25	10.4	44.3	33.9	41.3	30.9	35.8	32.8	24.3
31.25	11.7	42.9	31.2	39.9	28.2	33.9	30.9	23.6
62.5	17	38.4	21.4	35.4	18.4	27.9	24.9	21.5
100	22	35.3	13.3	32.3	10.3	23.8	20.8	20.1

Material Specifications

Conductor Material	Bare copper
Insulation Material	Polyolefin
Jacket Material	PVC

Environmental Specifications

Operating Temperature	-20 °C to +60 °C (-4 °F to +140 °F)
Flame Test Method	CM

Packaging and Weights

Packaging Type	Reelex
-----------------------	--------

Regulatory Compliance/Certifications

Agency	Classification
CHINA-ROHS	Below maximum concentration value
REACH-SVHC	Compliant as per SVHC revision on www.commscope.com/ProductCompliance
ROHS	Compliant

6-219590-2 | CS24CM WHT C5E 4/24 U/UTP CPK 305M

UK-ROHS

Compliant

