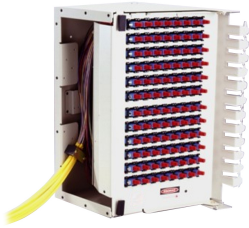


# MX6-PMBLR1080-H



OMX Fiber Termination Block, pre-terminated with pigtailed, 96 SC/APC, singlemode, putty white, right oriented

## OBSOLETE

This product was discontinued on: August 12, 2020

## Product Classification

<b>Regional Availability</b>	EMEA   Latin America   North America
<b>Product Type</b>	Fiber patch block
<b>Product Brand</b>	OMX600®
<b>Product Series</b>	OMX

## General Specifications

<b>Functionality</b>	Patching
<b>Application</b>	Used in OMX-style frames only
<b>Body Style</b>	Right orientation
<b>Color</b>	Putty white
<b>Color, front</b>	Putty white
<b>Growth Configuration</b>	Fully loaded
<b>Interface, front</b>	SC/APC
<b>Rack Type</b>	OMX
<b>Shelf Movement</b>	Hinged
<b>Total Ports, quantity</b>	96

## Dimensions

<b>Height</b>	373.126 mm   14.69 in
<b>Width</b>	203.2 mm   8 in
<b>Depth</b>	283.21 mm   11.15 in

## Material Specifications

# MX6-PMBLR1080-H

---

**Finish** Powder coated

**Material Type** Steel

## Optical Specifications

**Fiber Mode** Singlemode

## Packaging and Weights

**Packaging quantity** 1

## Regulatory Compliance/Certifications

<b>Agency</b>	<b>Classification</b>
CHINA-ROHS	Above maximum concentration value
REACH-SVHC	Compliant as per SVHC revision on <a href="http://www.commscope.com/ProductCompliance">www.commscope.com/ProductCompliance</a>
ROHS	Compliant/Exempted
UK-ROHS	Compliant/Exempted

