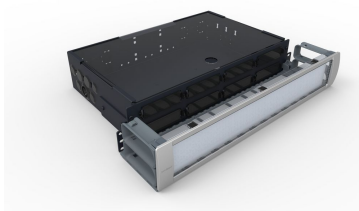


760193847 | 360G2-2U-MOD-FX

InstaPATCH® 360 SYSTIMAX 360G2 2U Fixed Modular Cassette Panel



OBSOLETE

This product was discontinued on: December 31, 2017

Replaced By:

760210740
HD-2U-FX

High Density 2U modular cassette fixed Panel, accepts (8) G2 modules or MPO panels, providing up to 96 duplex LC ports or up to 64 MPO ports

Product Classification

Regional Availability	Asia Australia/New Zealand EMEA Latin America North America
Portfolio	CommScope®
Product Type	Fiber patch panel
Product Brand	SYSTIMAX 360™

General Specifications

Application	Accepts eight G2 modular cassettes Accepts eight InstaPATCH® 360 data modules or 360DP panels Accepts two RoloSplices with four trays each
Rack Units	2
Shelf Movement	Fixed

Dimensions

Height	88.9 mm 3.5 in
Width	482.6 mm 19 in
Depth	355.6 mm 14 in

Packaging and Weights

Weight, net	4.627 kg 10.2 lb
--------------------	--------------------

Regulatory Compliance/Certifications

Agency

ISO 9001:2015

**Classification**

Designed, manufactured and/or distributed under this quality management system