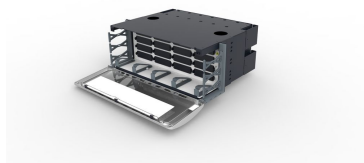


G2 4U Fixed Modular Cassette 16-slot Fiber Panel, unloaded



OBSOLETE

This product was discontinued on: June 30, 2022

Replaced By:

| | |
|-------------------|---|
| 760251050 | EPX 4U fixed panel, accepts (16) G2 style splice cassettes, modules or adapter packs, providing up to |
| EPX-4U-MOD-ENC-FX | 192 duplex LC ports |

Product Classification

Regional Availability Asia | Australia/New Zealand | EMEA

Portfolio CommScope®

Product Type Fiber patch panel

General Specifications

Application Accepts sixteen G2 modules | Accepts sixteen InstaPATCH® 360 data modules or 360DP panels | Accepts two Splice Wallets with six trays each

Interface, front Unloaded

Rack Units 4

Shelf Movement Fixed

Dimensions

Height 177.8 mm | 7 in

Width 482.6 mm | 19 in

Depth 393.7 mm | 15.5 in

Packaging and Weights

Weight, net 2.268 kg | 5 lb

Regulatory Compliance/Certifications

Agency

CHINA-ROHS
ISO 9001:2015
REACH-SVHC
ROHS

Classification

Below maximum concentration value
Designed, manufactured and/or distributed under this quality management system
Compliant as per SVHC revision on www.commscope.com/ProductCompliance
Compliant

