

583302-000 | FOSC-400A4-S24-2-NNN



FOSC® 400 A4 Fiber Optic Splice Closure, Heat Shrink Cable sealing, two pre-installed 24-splice trays

- Single-ended, O-ring sealed dome closure for splicing feeder and distribution cables
- Compatible with most common cable types: e.g. loose tube, central core, ribbon fiber
- FOSC splice trays hinged for access to any splice without disturbing other trays
- Closure can be used in aerial, pedestal and underground (up to 5 meters) environments
- Compatible with CommScope's CWDM modules and optical splitter trays

Product Classification

Regional Availability	Asia EMEA
Product Type	Single-ended, round fiber closure
Product Brand	FOSC®
Product Series	FOSC 400

General Specifications

Cable Blocking Components	None
Cable Entry Drop Port Style	Round
Cable Entry Main Port Style	Oval
Cable Ports Quantity, total	1 oval port (2 cables) + 4 round ports
Cable Sealing Type	Heat shrink
Closure Sealing Type	Dome-to-base clamp with O-ring
Closure Style	Single-ended
Color	Black
Flash Test Valve	None
Ground Feed-through	None
Mounting	Pole Strand Wall
Network Area Type	Feeder
Splice Tray Included, quantity	2
Splice Tray Type Included	24-way, heat shrink
Splicing Capacity, Single Fusion, maximum	48
Splicing Capacity, Single Splice, 12 fibers, maximum	48
Splicing Capacity, Single Splice, 6 fibers, maximum	24

583302-000 | FOSC-400A4-S24-2-NNN

Splicing Type, Supported

Single fusion

Dimensions

Length

420 mm | 16.535 in

Diameter

150 mm | 5.906 in

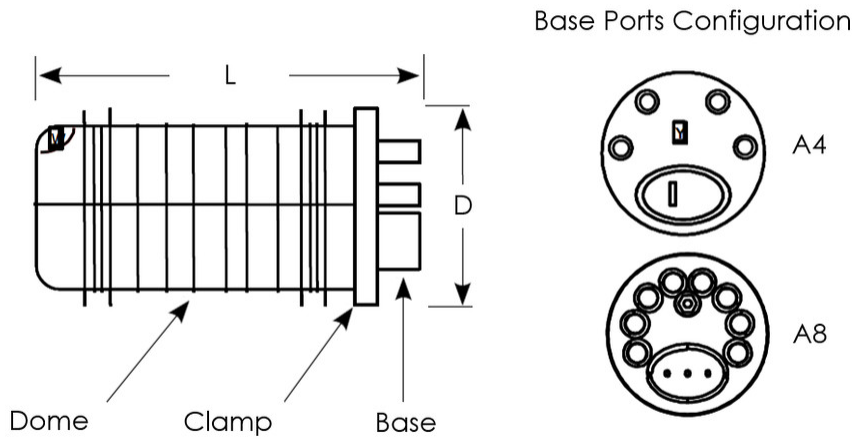
Diameter, with clamp

180 mm | 7.087 in

Main Cable Diameter, maximum

25 mm | 0.984 in

Dimension Drawing



Ordering Tree



¹⁴ AB closure can accept a mix of standard and slim trays; please contact your local sales representative.

¹⁵ Maximum 8 trays in case of S6 or A6 tray type

¹⁶ B closure can initially be fitted with trays; however, retrofitting a standard "B" closure (delivered with 4 trays or fewer) with a 5th and 6th tray is not possible. The B closure can be ordered with up to 5 trays pre-installed and capacity for later addition of a 6th tray (FOSC-400B4XXX/6...). If 5 or 6 trays are required, a storage basket cannot be used.

¹⁷ If 7 or 8 trays are required, a storage basket cannot be used.

Material Specifications

Material Type

Impact-resistant polymer

Environmental Specifications

Environmental Space

Below ground | Buried

Qualification Standards

IEC 61300, 6 m waterhead

Packaging and Weights

Packaging quantity

1

Packaging Type

Box | Carton

Weight, net

1.9 kg | 4.189 lb

Regulatory Compliance/Certifications

Agency	Classification
CHINA-ROHS	Below maximum concentration value
ISO 9001:2015	Designed, manufactured and/or distributed under this quality management system
REACH-SVHC	Compliant as per SVHC revision on www.commscope.com/ProductCompliance
ROHS	Compliant
UK-ROHS	Compliant/Exempted

