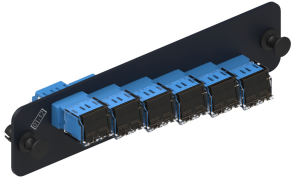


# 760067165 | PNL-BK-012-SFA-LC02-BL-SHUTTERED



1000-type Adapter Pack, with 6 TeraSPEED® SM duplex LC adapters, blue

## Product Classification

<b>Regional Availability</b>	Asia   Australia/New Zealand   EMEA   Latin America   North America
<b>Portfolio</b>	CommScope®
<b>Product Type</b>	Fiber adapter pack
<b>Product Brand</b>	TeraSPEED®
<b>Product Series</b>	1000-style

## General Specifications

<b>Application</b>	Used in conjunction with G2 1U, 2U and 4U adapter panel shelves, surface mount and raised floor enclosures
<b>Adapter Color</b>	Blue
<b>Adapter Cutout, quantity</b>	12
<b>Adapters, quantity</b>	6
<b>Body Style</b>	Duplex
<b>Interface</b>	LC/UPC
<b>Pigtails Included, quantity</b>	0
<b>Shuttered</b>	Yes

## Optical Specifications

<b>Fiber Mode</b>	Singlemode
-------------------	------------

## Regulatory Compliance/Certifications

<b>Agency</b>	<b>Classification</b>
ISO 9001:2015	Designed, manufactured and/or distributed under this quality management system



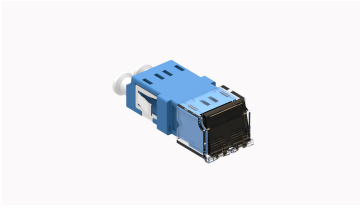
# 760067165 | PNL-BK-012-SFA-LC02-BL-SHUTTERED

---

## Included Products

760056028      –      TeraSPEED® LC Duplex Low Profile Shuttered Adapter, Blue, Single Pack  
SFA-LC02-BL/LP-SHUTTERED

# 760056028 | SFA-LC02-BL/LP-SHUTTERED



TeraSPEED® LC Duplex Low Profile Shuttered Adapter, Blue, Single Pack

## Product Classification

<b>Regional Availability</b>	Asia   Australia/New Zealand   EMEA   Latin America   North America
<b>Portfolio</b>	CommScope®
<b>Product Type</b>	Fiber adapter
<b>Product Brand</b>	TeraSPEED®
<b>Product Series</b>	SFA

## General Specifications

<b>Body Style</b>	Duplex
<b>Color</b>	Blue
<b>Interface</b>	LC/UPC
<b>Interface Feature</b>	Reduced footprint
<b>Mounting</b>	No flange
<b>Shuttered</b>	Yes
<b>Total Ports, quantity</b>	2
<b>Transmission Standards</b>	TIA/EIA-568-B.3   TIA/EIA-604 FOCIS-3

## Material Specifications

<b>Alignment Sleeve Material</b>	Zirconia
----------------------------------	----------

## Optical Specifications

<b>Fiber Mode</b>	Singlemode
-------------------	------------

## Packaging and Weights

<b>Packaging quantity</b>	1
---------------------------	---

## Regulatory Compliance/Certifications

<b>Agency</b>	<b>Classification</b>
CHINA-ROHS	Below maximum concentration value

# 760056028 | SFA-LC02-BL/LP-SHUTTERED

---

ISO 9001:2015

Designed, manufactured and/or distributed under this quality management system

REACH-SVHC

Compliant as per SVHC revision on [www.commscope.com/ProductCompliance](http://www.commscope.com/ProductCompliance)

ROHS

Compliant

UK-ROHS

Compliant

