

CJAJG | IP06-24LUTP-01S-PG2H

Base Product



InstaPATCH® Cu GigaSPEED XL® U/UTP LSZH Preterminated Copper Cable, single row standard density outlet to dual row high density RJ45 plug, 24 links

Product Classification

Regional Availability	Asia Australia/New Zealand EMEA Latin America North America
Portfolio	CommScope®
Product Type	Copper trunk cable assembly
Product Brand	GigaSPEED XL® InstaPATCH® Cu

General Specifications

ANSI/TIA Category	6
Cable Type	U/UTP (unshielded)
Conductor Type	Solid
Interface, Connector A	Information outlet
Interface Feature, connector A	Single row Standard density
Interface, Connector B	RJ45 plug
Interface Feature, connector B	Dual row High density
Link Count	24
Wiring	T568B

Dimensions

Cable Assembly Length Range (m)	2 – 30
Cable Assembly Length Range (ft)	7 – 98

Electrical Specifications

dc Resistance, maximum	0.3 ohm
Safety Voltage Rating	300 V

Ordering Tree

CJAJG | IP06-24LUTP-01S-PG2H

1 2 3 4 5 6 7 8 9 10 11 12																																																																																																			
C A A A C - 1 1 H A B B F 0 5 0																																																																																																			
Cable Type	Connector B	Orientation A	Orientation B																																																																																																
<table border="1"> <tr><td>A</td><td>Cat 6A X10D – U/UTP (Plenum)</td></tr> <tr><td>B</td><td>Cat 6A X10D – U/UTP (Riser)</td></tr> <tr><td>C</td><td>Cat 6A X10D – U/UTP (LSZH)</td></tr> <tr><td>D</td><td>Cat 6A X10D – F/UTP (Plenum)</td></tr> <tr><td>E</td><td>Cat 6A X10D – F/UTP (Riser)</td></tr> <tr><td>F</td><td>Cat 6A X10D – F/UTP (LSZH)</td></tr> <tr><td>G</td><td>Cat 6 XL – U/UTP (Plenum)</td></tr> <tr><td>H</td><td>Cat 6 XL – U/UTP (Riser)</td></tr> <tr><td>J</td><td>Cat 6 XL – U/UTP (LSZH)</td></tr> <tr><td>Q</td><td>Cat 6A X10D – S/FTP (LSZH)</td></tr> <tr><td>R</td><td>Cat 6 – U/UTP Class B Rated (LSZH)</td></tr> <tr><td>S</td><td>Cat 6A – U/UTP Class B Rated (LSZH)</td></tr> <tr><td>Y</td><td>Cat 6A X10D SD – U/UTP (Riser)</td></tr> </table>	A	Cat 6A X10D – U/UTP (Plenum)	B	Cat 6A X10D – U/UTP (Riser)	C	Cat 6A X10D – U/UTP (LSZH)	D	Cat 6A X10D – F/UTP (Plenum)	E	Cat 6A X10D – F/UTP (Riser)	F	Cat 6A X10D – F/UTP (LSZH)	G	Cat 6 XL – U/UTP (Plenum)	H	Cat 6 XL – U/UTP (Riser)	J	Cat 6 XL – U/UTP (LSZH)	Q	Cat 6A X10D – S/FTP (LSZH)	R	Cat 6 – U/UTP Class B Rated (LSZH)	S	Cat 6A – U/UTP Class B Rated (LSZH)	Y	Cat 6A X10D SD – U/UTP (Riser)	<table border="1"> <tr><td>A</td><td>Outlet* – Single Row Standard Density</td></tr> <tr><td>B</td><td>Outlet* – Dual Row Standard Density</td></tr> <tr><td>C</td><td>Outlet* – Dual Row High Density</td></tr> <tr><td>G</td><td>RJ45 Plug* – Single Row Standard Density</td></tr> <tr><td>H</td><td>RJ45 Plug* – Dual Row Standard Density</td></tr> <tr><td>J</td><td>RJ45 Plug* – Dual Row High Density</td></tr> <tr><td>N</td><td>1100 Module</td></tr> <tr><td>R</td><td>360 1100 Evolve Module</td></tr> <tr><td>S</td><td>OneLink 2x6</td></tr> <tr><td>T</td><td>OneLink 2x4</td></tr> </table>	A	Outlet* – Single Row Standard Density	B	Outlet* – Dual Row Standard Density	C	Outlet* – Dual Row High Density	G	RJ45 Plug* – Single Row Standard Density	H	RJ45 Plug* – Dual Row Standard Density	J	RJ45 Plug* – Dual Row High Density	N	1100 Module	R	360 1100 Evolve Module	S	OneLink 2x6	T	OneLink 2x4	<table border="1"> <tr><td>1</td><td>Trident Series Flat</td></tr> <tr><td>2</td><td>Right Paired Flat</td></tr> <tr><td>3</td><td>Right Series Flat</td></tr> <tr><td>4</td><td>Left Paired Flat</td></tr> <tr><td>5</td><td>Left Series Flat</td></tr> <tr><td>6</td><td>Trident Paired Flat</td></tr> <tr><td>A</td><td>Trident Series Angled</td></tr> <tr><td>B</td><td>Right Paired Angled</td></tr> <tr><td>C</td><td>Right Series Angled</td></tr> <tr><td>D</td><td>Left Paired Angled</td></tr> <tr><td>E</td><td>Left Series Angled</td></tr> <tr><td>F</td><td>Trident Paired Angled</td></tr> </table>	1	Trident Series Flat	2	Right Paired Flat	3	Right Series Flat	4	Left Paired Flat	5	Left Series Flat	6	Trident Paired Flat	A	Trident Series Angled	B	Right Paired Angled	C	Right Series Angled	D	Left Paired Angled	E	Left Series Angled	F	Trident Paired Angled	<table border="1"> <tr><td>1</td><td>Trident Series Flat</td></tr> <tr><td>2</td><td>Right Paired Flat</td></tr> <tr><td>3</td><td>Right Series Flat</td></tr> <tr><td>4</td><td>Left Paired Flat</td></tr> <tr><td>5</td><td>Left Series Flat</td></tr> <tr><td>6</td><td>Trident Paired Flat</td></tr> <tr><td>A</td><td>Trident Series Angled</td></tr> <tr><td>B</td><td>Right Paired Angled</td></tr> <tr><td>C</td><td>Right Series Angled</td></tr> <tr><td>D</td><td>Left Paired Angled</td></tr> <tr><td>E</td><td>Left Series Angled</td></tr> <tr><td>F</td><td>Trident Paired Angled</td></tr> <tr><td>X</td><td>Not Applicable</td></tr> </table>	1	Trident Series Flat	2	Right Paired Flat	3	Right Series Flat	4	Left Paired Flat	5	Left Series Flat	6	Trident Paired Flat	A	Trident Series Angled	B	Right Paired Angled	C	Right Series Angled	D	Left Paired Angled	E	Left Series Angled	F	Trident Paired Angled	X	Not Applicable
A	Cat 6A X10D – U/UTP (Plenum)																																																																																																		
B	Cat 6A X10D – U/UTP (Riser)																																																																																																		
C	Cat 6A X10D – U/UTP (LSZH)																																																																																																		
D	Cat 6A X10D – F/UTP (Plenum)																																																																																																		
E	Cat 6A X10D – F/UTP (Riser)																																																																																																		
F	Cat 6A X10D – F/UTP (LSZH)																																																																																																		
G	Cat 6 XL – U/UTP (Plenum)																																																																																																		
H	Cat 6 XL – U/UTP (Riser)																																																																																																		
J	Cat 6 XL – U/UTP (LSZH)																																																																																																		
Q	Cat 6A X10D – S/FTP (LSZH)																																																																																																		
R	Cat 6 – U/UTP Class B Rated (LSZH)																																																																																																		
S	Cat 6A – U/UTP Class B Rated (LSZH)																																																																																																		
Y	Cat 6A X10D SD – U/UTP (Riser)																																																																																																		
A	Outlet* – Single Row Standard Density																																																																																																		
B	Outlet* – Dual Row Standard Density																																																																																																		
C	Outlet* – Dual Row High Density																																																																																																		
G	RJ45 Plug* – Single Row Standard Density																																																																																																		
H	RJ45 Plug* – Dual Row Standard Density																																																																																																		
J	RJ45 Plug* – Dual Row High Density																																																																																																		
N	1100 Module																																																																																																		
R	360 1100 Evolve Module																																																																																																		
S	OneLink 2x6																																																																																																		
T	OneLink 2x4																																																																																																		
1	Trident Series Flat																																																																																																		
2	Right Paired Flat																																																																																																		
3	Right Series Flat																																																																																																		
4	Left Paired Flat																																																																																																		
5	Left Series Flat																																																																																																		
6	Trident Paired Flat																																																																																																		
A	Trident Series Angled																																																																																																		
B	Right Paired Angled																																																																																																		
C	Right Series Angled																																																																																																		
D	Left Paired Angled																																																																																																		
E	Left Series Angled																																																																																																		
F	Trident Paired Angled																																																																																																		
1	Trident Series Flat																																																																																																		
2	Right Paired Flat																																																																																																		
3	Right Series Flat																																																																																																		
4	Left Paired Flat																																																																																																		
5	Left Series Flat																																																																																																		
6	Trident Paired Flat																																																																																																		
A	Trident Series Angled																																																																																																		
B	Right Paired Angled																																																																																																		
C	Right Series Angled																																																																																																		
D	Left Paired Angled																																																																																																		
E	Left Series Angled																																																																																																		
F	Trident Paired Angled																																																																																																		
X	Not Applicable																																																																																																		
Connector A	Link	Outlet Color	UOM																																																																																																
<table border="1"> <tr><td>A</td><td>Outlet* – Single Row Standard Density</td></tr> <tr><td>B</td><td>Outlet* – Dual Row Standard Density</td></tr> <tr><td>C</td><td>Outlet* – Dual Row High Density</td></tr> <tr><td>G</td><td>RJ45 Plug* – Single Row Standard Density</td></tr> <tr><td>H</td><td>RJ45 Plug* – Dual Row Standard Density</td></tr> <tr><td>J</td><td>RJ45 Plug* – Dual Row High Density</td></tr> <tr><td>N</td><td>1100 Module</td></tr> <tr><td>R</td><td>360 1100 Evolve Module</td></tr> <tr><td>S</td><td>OneLink 2x6</td></tr> <tr><td>T</td><td>OneLink 2x4</td></tr> <tr><td>X</td><td>Unterminated</td></tr> </table>	A	Outlet* – Single Row Standard Density	B	Outlet* – Dual Row Standard Density	C	Outlet* – Dual Row High Density	G	RJ45 Plug* – Single Row Standard Density	H	RJ45 Plug* – Dual Row Standard Density	J	RJ45 Plug* – Dual Row High Density	N	1100 Module	R	360 1100 Evolve Module	S	OneLink 2x6	T	OneLink 2x4	X	Unterminated	<table border="1"> <tr><td>B</td><td>6</td></tr> <tr><td>C</td><td>8</td></tr> <tr><td>D</td><td>12</td></tr> <tr><td>E</td><td>16</td></tr> <tr><td>F</td><td>18</td></tr> <tr><td>G</td><td>24</td></tr> </table>	B	6	C	8	D	12	E	16	F	18	G	24	<table border="1"> <tr><td>0</td><td>Not Applicable</td></tr> <tr><td>1</td><td>Black (BK)</td></tr> <tr><td>2</td><td>Blue (BL)</td></tr> <tr><td>B</td><td>White (WH)</td></tr> </table>	0	Not Applicable	1	Black (BK)	2	Blue (BL)	B	White (WH)	<table border="1"> <tr><td>11</td><td>F</td><td>Foot</td></tr> <tr><td></td><td>M</td><td>Meter</td></tr> </table>	11	F	Foot		M	Meter																																																
A	Outlet* – Single Row Standard Density																																																																																																		
B	Outlet* – Dual Row Standard Density																																																																																																		
C	Outlet* – Dual Row High Density																																																																																																		
G	RJ45 Plug* – Single Row Standard Density																																																																																																		
H	RJ45 Plug* – Dual Row Standard Density																																																																																																		
J	RJ45 Plug* – Dual Row High Density																																																																																																		
N	1100 Module																																																																																																		
R	360 1100 Evolve Module																																																																																																		
S	OneLink 2x6																																																																																																		
T	OneLink 2x4																																																																																																		
X	Unterminated																																																																																																		
B	6																																																																																																		
C	8																																																																																																		
D	12																																																																																																		
E	16																																																																																																		
F	18																																																																																																		
G	24																																																																																																		
0	Not Applicable																																																																																																		
1	Black (BK)																																																																																																		
2	Blue (BL)																																																																																																		
B	White (WH)																																																																																																		
11	F	Foot																																																																																																	
	M	Meter																																																																																																	
Bundling	Jacket Color	Length																																																																																																	
<table border="1"> <tr><td>7</td><td>H</td><td>Hook-n-loop</td></tr> <tr><td></td><td>S</td><td>Sleaving</td></tr> </table>	7	H	Hook-n-loop		S	Sleaving	<table border="1"> <tr><td>10</td><td>B</td><td>White (WH)</td></tr> <tr><td></td><td>C</td><td>Slate (SL)</td></tr> <tr><td></td><td>Z</td><td>Blue (BL)</td></tr> </table>	10	B	White (WH)		C	Slate (SL)		Z	Blue (BL)	<table border="1"> <tr><td>12</td><td>XXX</td></tr> </table>	12	XXX	<ul style="list-style-type: none"> Cords > 1m are authorized for use in channels and are an effective standalone method used to connect active devices Cords < 1m are also valid elements for use in a channel or as an equipment interconnect, but due to their limited length are not guaranteed to meet component compliance requirements that were developed to assess the quality of longer cords 																																																																															
7	H	Hook-n-loop																																																																																																	
	S	Sleaving																																																																																																	
10	B	White (WH)																																																																																																	
	C	Slate (SL)																																																																																																	
	Z	Blue (BL)																																																																																																	
12	XXX																																																																																																		

Environmental Specifications

Operating Temperature	-10 °C to +60 °C (+14 °F to +140 °F)
Environmental Space	Low Smoke Zero Halogen (LSZH)
Flammability Rating	UL 94 V-0

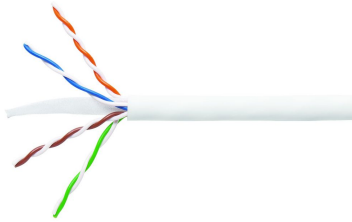
Regulatory Compliance/Certifications

Agency	Classification
ISO 9001:2015	Designed, manufactured and/or distributed under this quality management system

Included Products

3071E-4/23	–	GigaSPEED XL® 3071 ETL Verified Category 6 U/UTP Cable, low smoke zero halogen, 4 pair count
MGS400	–	GigaSPEED XL® M-Series Modular Jack, RJ45, Cat6 Unshielded

3071E-4/23



GigaSPEED XL® 3071 ETL Verified Category 6 U/UTP Cable, low smoke zero halogen, 4 pair count

Product Classification

Regional Availability	Asia Australia/New Zealand EMEA Latin America
Portfolio	SYSTIMAX®
Product Type	Twisted pair cable
Product Brand	GigaSPEED XL®

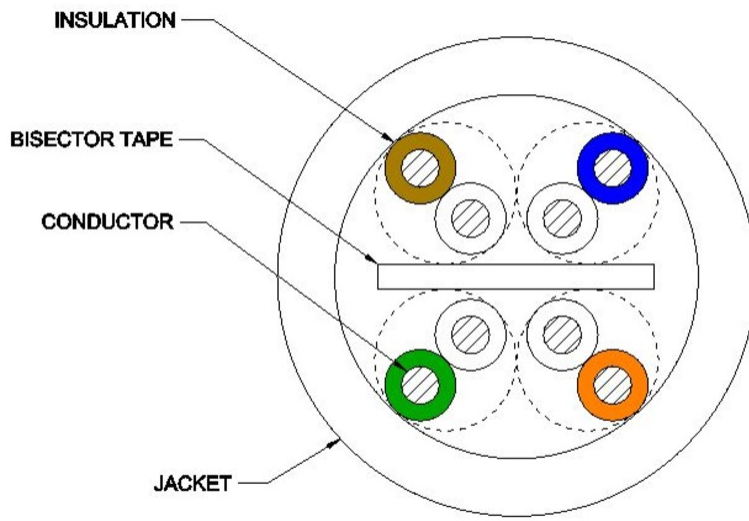
General Specifications

Product Number	3071E
ANSI/TIA Category	6
Cable Component Type	Horizontal
Cable Type	U/UTP (unshielded)
Conductor Type, singles	Solid
Conductors, quantity	8
Pairs, quantity	4
Separator Type	Bisector
Transmission Standards	ANSI/TIA-568.2-D CENELEC EN 50288-6-1 ISO/IEC 11801 Class E

Dimensions

Diameter Over Jacket, nominal	5.918 mm 0.233 in
Jacket Thickness	0.508 mm 0.02 in
Conductor Gauge, singles	23 AWG

Cross Section Drawing



Electrical Specifications

dc Resistance Unbalance, maximum	5 %
dc Resistance, maximum	7.61 ohms/100 m 2.32 ohms/100 ft
Mutual Capacitance at Frequency	5.6 nF/100 m @ 1 kHz
Nominal Velocity of Propagation (NVP)	69 %
Operating Frequency, maximum	300 MHz
Operating Voltage, maximum	80 V
Remote Powering	Fully complies with the recommendations set forth by IEEE 802.3bt (Type 4) for the safe delivery of power over LAN cable when installed according to ISO/IEC 14763-2, CENELEC EN 50174-1, CENELEC EN 50174-2 or TIA TSB-184-A

Material Specifications

Conductor Material	Bare copper
Insulation Material	Polyolefin
Jacket Material	Low Smoke Zero Halogen (LSZH)
Separator Material	Polyolefin

Mechanical Specifications

Pulling Tension, maximum	11.34 kg 25 lb
---------------------------------	------------------

3071E-4/23

Environmental Specifications

Installation temperature	0 °C to +60 °C (+32 °F to +140 °F)
Operating Temperature	-20 °C to +60 °C (-4 °F to +140 °F)
Acid Gas Test Method	IEC 60754-2
Environmental Space	Low Smoke Zero Halogen (LSZH)
Flame Test Method	IEC 60332-3-22
Smoke Test Method	IEC 61034-2

Packaging and Weights

Cable weight	37.204 kg/km 25 lb/kft
---------------------	--------------------------

Regulatory Compliance/Certifications

Agency	Classification
ISO 9001:2015	Designed, manufactured and/or distributed under this quality management system

MGS400

Base Product



GigaSPEED XL® M-Series Modular Jack, RJ45, Cat6 Unshielded

- Electrical performance guaranteed to meet or exceed the channel specifications to ISO/IEC 11801 Class E and ANSI/TIA-568.2-D Category 6
- Patented crossing of straddling pair contacts enables efficient alien crosstalk reduction in the channel
- Snaps into standard M-series faceplates, surface-mount boxes, consolidation point boxes and modular panels
- Mountable either at 90 degrees (straight) or 45 degrees (angled) in M-series faceplate

Product Classification

Regional Availability

Asia | Australia/New Zealand | EMEA | Latin America | North America

Portfolio

SYSTIMAX®

Product Type

Modular jack

Product Brand

GigaSPEED XL®

Product Series

MGS400

General Specifications

ANSI/TIA Category

6

Cable Type

Unshielded

Conductor Type

Solid | Stranded

Termination Type

IDC

Wiring

T568A | T568B

Dimensions

Height

19.4 mm | 0.764 in

Width

21.08 mm | 0.83 in

Depth

30.2 mm | 1.189 in

Compatible Conductor Gauge, solid

22 AWG | 24 AWG

Compatible Conductor Gauge, stranded

22 AWG | 24 AWG

Electrical Specifications

Contact Resistance Variation, maximum

20 mOhm

Contact Resistance, maximum

100 mOhm

MGS400

Current Rating at Temperature	1.5 A @ 20 °C 1.5 A @ 68 °F
Dielectric Withstand Voltage, RMS, conductive surface	1,500 Vac @ 60 Hz
Dielectric Withstand Voltage, RMS, contact-to-contact	1,000 Vac @ 60 Hz
Insulation Resistance, minimum	500 MOhm
PoE Durability	Supports IEEE 802.3bt Type 4 (90 W) applications after 3000 plug to jack mating cycles

Material Specifications

Contact Plating Material	Precious metals
Material Type	Copper alloy High-impact, flame retardant, thermoplastic
Termination Contact Plating	Nickel

Mechanical Specifications

Plug Retention Force, minimum	133 N 29.9 lbf
Plug to Jack Mating Cycles	Complies to IEC 60603-7 series

Environmental Specifications

Operating Temperature	-10 °C to +60 °C (+14 °F to +140 °F)
Storage Temperature	-40 °C to +70 °C (-40 °F to +158 °F)
Relative Humidity	Up to 95%, non-condensing
Flammability Rating	UL 94 V-0
Safety Standard	UL cUL

Regulatory Compliance/Certifications

Agency	Classification
ISO 9001:2015	Designed, manufactured and/or distributed under this quality management system