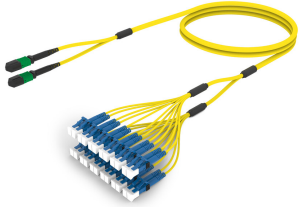


# FNWMPLCAF

## Base Product



Singlemode MPO (Unpinned) to LC/UPC, InstaPATCH® 360 Ruggedized Fanout Cable, 24-Fiber, Low Smoke Zero Halogen

## Product Classification

### Regional Availability

Asia | Australia/New Zealand | China | Europe | India | Latin America | Middle East/Africa | North America

### Portfolio

CommScope®

### Product Type

Ruggedized fanout

### Product Brand

SYSTIMAX InstaPATCH® 360

### Ordering Note

For lengths greater than 999 ft (304 m), orders must be in meters | Minimum length may vary based on cable configuration | Not available in the United States or Canada

## General Specifications

### Color, boot A

Black

### Color, connector A

Green

### Color, boot B

Blue

### Color, connector B

Blue

### Construction Type

Stranded

### Furcation Color

Yellow

### Interface, Connector A

MPO-12/APC Female

### Interface, Connector B

LC/UPC

### Jacket Color

Yellow

### Polarity

Method B (LL)

### Fibers per Subunit, quantity

12

### Total Fibers, quantity

24

## Dimensions

### Cable Assembly Length Range (m)

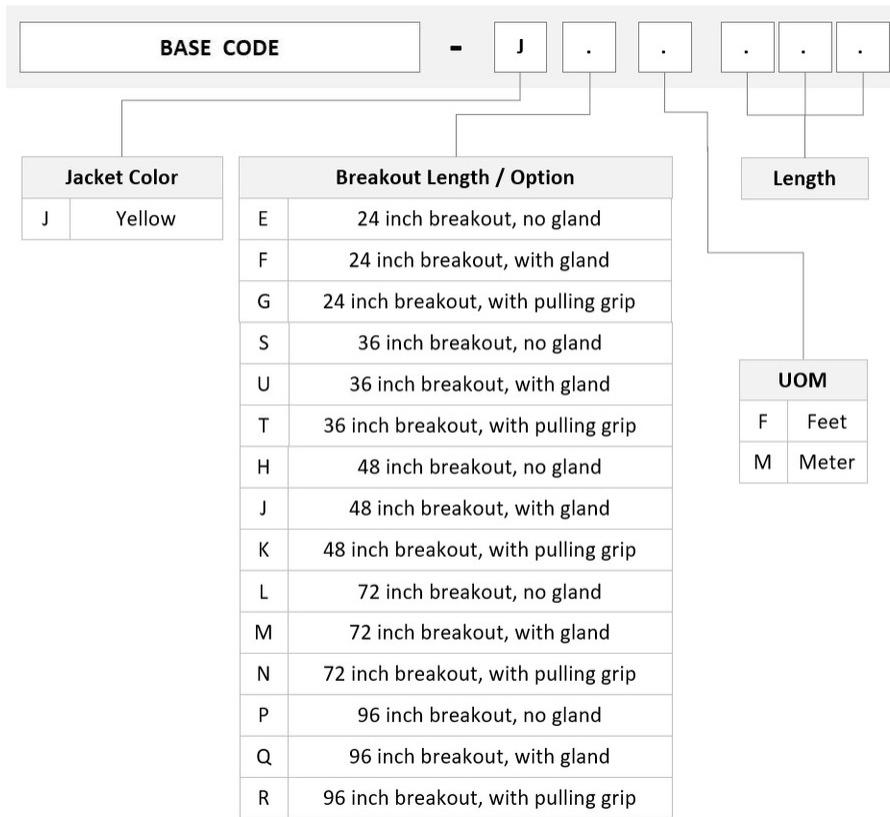
3 – 999

### Cable Assembly Length Range (ft)

7 – 999

# FNWMPLCAF

## Ordering Tree



## Mechanical Specifications

**Cable Retention Strength, maximum** 11.24 lb @ 0° | 4.40 lb @ 90°

## Optical Specifications

**Fiber Mode** Singlemode

**Fiber Type** G.652.D | G.657.A1, TeraSPEED®

## Environmental Specifications

**Operating Temperature** -10 °C to +60 °C (+14 °F to +140 °F)

**Environmental Space** Dual Rated LSZH/Riser | Indoor

## Regulatory Compliance/Certifications

**Agency** ANATEL  
**Classification** Compliant

# FNWMPLCAF

---

CHINA-ROHS	Below maximum concentration value
ISO 9001:2015	Designed, manufactured and/or distributed under this quality management system
REACH-SVHC	Compliant as per SVHC revision on <a href="http://www.commscope.com/ProductCompliance">www.commscope.com/ProductCompliance</a>
ROHS	Compliant
UK-ROHS	Compliant



## Included Products

760050351 N-024-MP-8W-F12YL/D	-	Fiber indoor cable, TeraSPEED® Low Smoke Zero Halogen Riser MPO Trunk, 24 fiber with 12 fiber subunits, Gel-free, Singlemode G.652.D and G.657.A1, Feet jacket marking, Yellow jacket color, Dca flame rating
860366137	-	MPO12, LOW LOSS, FEMALE, Singlemode, GREEN, 3mm
860637435	-	LC/UPC Connector, Singlemode, Blue, Short Boot

# 760050351 | N-024-MP-8W-F12YL/D



Fiber indoor cable, TeraSPEED® Low Smoke Zero Halogen Riser MPO Trunk, 24 fiber with 12 fiber subunits, Gel-free, Singlemode G.652.D and G.657.A1, Feet jacket marking, Yellow jacket color, Dca flame rating

## Product Classification

<b>Regional Availability</b>	Asia   Australia/New Zealand   EMEA   Latin America   North America
<b>Portfolio</b>	CommScope®
<b>Product Type</b>	Fiber indoor cable
<b>Product Series</b>	N-MP

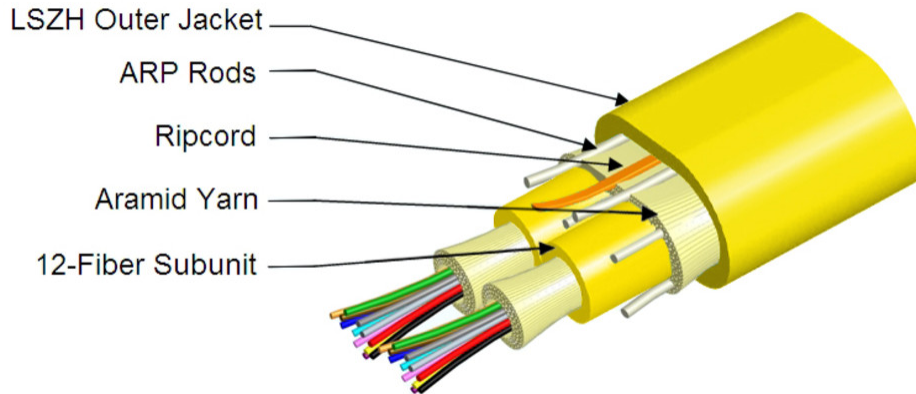
## General Specifications

<b>Cable Type</b>	MPO trunk cable
<b>Construction Type</b>	Non-armored
<b>Subunit Type</b>	Gel-free
<b>Jacket Color</b>	Yellow
<b>Jacket Marking</b>	Feet
<b>Subunit, quantity</b>	2
<b>Fibers per Subunit, quantity</b>	12
<b>Total Fiber Count</b>	24

## Dimensions

<b>Height Over Jacket</b>	5.2 mm   0.205 in
<b>Width Over Jacket</b>	8.2 mm   0.323 in
<b>Buffer Tube/Subunit Diameter</b>	3 mm   0.118 in

## Representative Image



## Mechanical Specifications

<b>Minimum Bend Radius, loaded</b>	78 mm   3.071 in
<b>Minimum Bend Radius, unloaded</b>	52 mm   2.047 in
<b>Tensile Load, long term, maximum</b>	200 N   44.962 lbf
<b>Tensile Load, short term, maximum</b>	667 N   149.948 lbf
<b>Compression</b>	10 N/mm   57.101 lb/in
<b>Compression Test Method</b>	FOTP-41   IEC 60794-1 E3
<b>Flex</b>	300 cycles
<b>Flex Test Method</b>	FOTP-104   IEC 60794-1 E6
<b>Impact</b>	5.88 N-m   52.042 in lb
<b>Impact Test Method</b>	FOTP-25   IEC 60794-1 E4
<b>Strain</b>	See long and short term tensile loads
<b>Strain Test Method</b>	FOTP-33   IEC 60794-1 E1
<b>Twist</b>	10 cycles
<b>Twist Test Method</b>	FOTP-85   IEC 60794-1 E7
<b>Vertical Rise, maximum</b>	491 m   1,610.892 ft

## Optical Specifications

<b>Fiber Type</b>	G.652.D and G.657.A1, TeraSPEED®   OS2   OS2
-------------------	--

## Environmental Specifications

<b>Installation temperature</b>	-20 °C to +60 °C (-4 °F to +140 °F)
---------------------------------	-------------------------------------

# 760050351 | N-024-MP-8W-F12YL/D

<b>Operating Temperature</b>	-20 °C to +70 °C (-4 °F to +158 °F)
<b>Storage Temperature</b>	-40 °C to +70 °C (-40 °F to +158 °F)
<b>Cable Qualification Standards</b>	ANSI/ICEA S-83-596   Telcordia GR-409
<b>EN50575 CPR Cable EuroClass Fire Performance</b>	Dca
<b>EN50575 CPR Cable EuroClass Smoke Rating</b>	s1a
<b>EN50575 CPR Cable EuroClass Droplets Rating</b>	d1
<b>EN50575 CPR Cable EuroClass Acidity Rating</b>	a1
<b>Environmental Space</b>	Low Smoke Zero Halogen (LSZH)   Riser
<b>Flame Test Listing</b>	NEC OFNR-ST1 (ETL) and c(ETL)
<b>Flame Test Method</b>	IEC 60332-3   IEC 60754-2   IEC 61034-2   UL 1666   UL 1685

## Environmental Test Specifications

<b>Heat Age</b>	-20 °C to +85 °C (-4 °F to +185 °F)
<b>Heat Age Test Method</b>	IEC 60794-1 F9
<b>Low High Bend</b>	-20 °C to +70 °C (-4 °F to +158 °F)
<b>Low High Bend Test Method</b>	FOTP-37   IEC 60794-1 E11
<b>Temperature Cycle</b>	-20 °C to +70 °C (-4 °F to +158 °F)
<b>Temperature Cycle Test Method</b>	FOTP-3   IEC 60794-1 F1

## Packaging and Weights

<b>Cable weight</b>	42 kg/km   28.223 lb/kft
---------------------	--------------------------

## Regulatory Compliance/Certifications

<b>Agency</b>	<b>Classification</b>
CENELEC	EN 50575 compliant, Declaration of Performance (DoP) available
CHINA-ROHS	Below maximum concentration value
ISO 9001:2015	Designed, manufactured and/or distributed under this quality management system
REACH-SVHC	Compliant as per SVHC revision on <a href="http://www.commscope.com/ProductCompliance">www.commscope.com/ProductCompliance</a>
ROHS	Compliant
UK-ROHS	Compliant



### \* Footnotes

**Operating Temperature** Specification applicable to non-terminated bulk fiber cable

# 860366137

---



MPO12, LOW LOSS, FEMALE, Singlemode, GREEN, 3mm

## Product Classification

<b>Regional Availability</b>	Asia   Australia/New Zealand   EMEA   Latin America   North America
<b>Portfolio</b>	CommScope®
<b>Product Type</b>	Fiber connector
<b>Product Brand</b>	TeraSPEED®

## General Specifications

<b>Color</b>	Green
<b>Color, boot</b>	Black
<b>Ferrule Geometry</b>	Angled
<b>Interface</b>	MPO/APC Female
<b>Interface Feature</b>	Unpinned
<b>Total Fiber Count</b>	12

## Dimensions

<b>Length</b>	60.1 mm   2.366 in
<b>Compatible Cable Diameter</b>	3 mm   0.118 in

## Material Specifications

<b>Ferrule Material</b>	Polymer
-------------------------	---------

## Mechanical Specifications

<b>Cable Retention Strength, maximum</b>	11.24 lb @ 0 °
--	----------------

## Optical Specifications

<b>Fiber Mode</b>	Singlemode
<b>Fiber Type</b>	G.652.D and G.657.A1, TeraSPEED®   OS2
<b>Insertion Loss Change, mating</b>	0.3 dB
<b>Optical Components Standard</b>	ANSI/TIA-568-C.3

# 860366137

---

<b>Insertion Loss Change, temperature</b>	0.3 dB
<b>Insertion Loss, maximum</b>	0.67 dB
<b>Return Loss, minimum</b>	55 dB

## Packaging and Weights

<b>Packaging quantity</b>	1
---------------------------	---

## Regulatory Compliance/Certifications

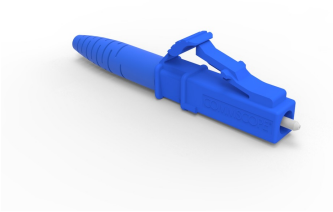
<b>Agency</b>	<b>Classification</b>
CHINA-ROHS	Below maximum concentration value
ISO 9001:2015	Designed, manufactured and/or distributed under this quality management system
REACH-SVHC	Compliant as per SVHC revision on <a href="http://www.commscope.com/ProductCompliance">www.commscope.com/ProductCompliance</a>
ROHS	Compliant
UK-ROHS	Compliant



## \* Footnotes

<b>Insertion Loss Change, mating</b>	TIA-568: Maximum insertion loss change after 500 matings
<b>Insertion Loss Change, temperature</b>	Maximum insertion loss change from -10 °C to +60 °C (+14 °F to +140 °F)





## LC/UPC Connector, Singlemode, Blue, Short Boot

### Product Classification

<b>Regional Availability</b>	Asia   Australia/New Zealand   EMEA   Latin America   North America
<b>Portfolio</b>	CommScope®
<b>Product Type</b>	Fiber connector

### General Specifications

<b>Color, boot</b>	Blue
<b>Color, housing</b>	Blue
<b>Interface</b>	LC/UPC

### Dimensions

<b>Length</b>	41.6 mm   1.638 in
---------------	--------------------

### Material Specifications

<b>Ferrule Material</b>	Zirconia
-------------------------	----------

### Mechanical Specifications

<b>Cable Retention Strength, maximum</b>	11.24 lb @ 0 °
--	----------------

### Optical Specifications

<b>Fiber Mode</b>	Singlemode
<b>Insertion Loss Change, mating</b>	0.2 dB
<b>Optical Components Standard</b>	ANSI/TIA-568. 3-D   IEC 61753-1
<b>Insertion Loss Change, temperature</b>	0.3 dB
<b>Insertion Loss, maximum</b>	0.25 dB
<b>Return Loss, minimum</b>	55 dB

### Regulatory Compliance/Certifications

Agency	Classification
CHINA-ROHS	Below maximum concentration value
ROHS	Compliant
UK-ROHS	Compliant



## \* Footnotes

**Insertion Loss Change, mating** TIA-568: Maximum insertion loss change after 500 matings

**Insertion Loss Change, temperature** Maximum insertion loss change from -10 °C to +60 °C (+14 °F to +140 °F)