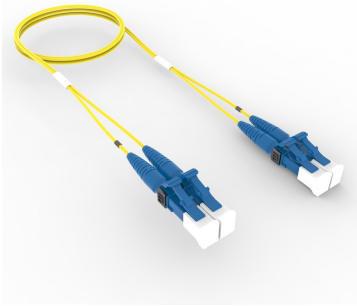


# UDGLCLC42

## Base Product



Ultra Low Loss Singlemode, LC/UPC to LC/UPC, Fiber Patch Cord, 1.6 mm Duplex, Plenum

## Product Classification

<b>Regional Availability</b>	Asia   Australia/New Zealand   China   Europe   India   Latin America   Middle East/Africa   North America
<b>Portfolio</b>	CommScope®
<b>Product Type</b>	Fiber patch cord, duplex
<b>Product Brand</b>	SYSTIMAX ULL
<b>Product Series</b>	UDG
<b>Ordering Note</b>	For lengths greater than 999 ft (304 m), orders must be in meters   Minimum length may vary based on cable configuration

## General Specifications

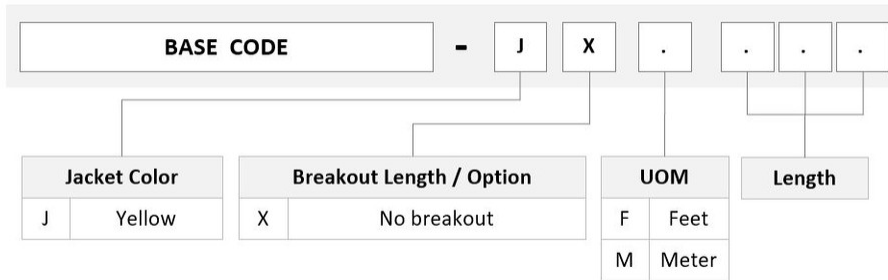
<b>Color, boot A</b>	Blue
<b>Color, connector A</b>	Blue
<b>Color, boot B</b>	Blue
<b>Color, connector B</b>	Blue
<b>Interface, Connector A</b>	LC/UPC
<b>Interface, Connector B</b>	LC/UPC
<b>Jacket Color</b>	Yellow
<b>Polarity</b>	Pairs, flipped
<b>Total Fibers, quantity</b>	2

## Dimensions

<b>Cable Assembly Length Range (m)</b>	1 – 999
<b>Cable Assembly Length Range (ft)</b>	1 – 999
<b>Diameter Over Jacket</b>	1.6 mm   0.063 in

# UDGLCLC42

## Ordering Tree



## Mechanical Specifications

**Cable Retention Strength, maximum** 11.24 lb @ 0 ° | 4.40 lb @ 90 °

## Optical Specifications

**Fiber Mode** Singlemode

**Fiber Type** G.657.A2, TeraSPEED®

## Environmental Specifications

**Operating Temperature** -10 °C to +60 °C (+14 °F to +140 °F)

**Environmental Space** Plenum

## Packaging and Weights

**Packaging quantity** 1

## Regulatory Compliance/Certifications

Agency	Classification
CHINA-ROHS	Above maximum concentration value
ISO 9001:2015	Designed, manufactured and/or distributed under this quality management system
ROHS	Compliant/Exempted
UK-ROHS	Compliant/Exempted



## Included Products

760238069 – Fiber indoor cable, 1.6 mm diameter, Plenum rated, Zipcord 2-fiber, Singlemode G.657.A2/B2,

# UDGLCLC42

---

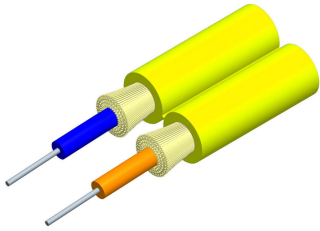
P-002-ZC-8G-F16YL

Feet jacket marking, Yellow jacket color

860655464

-

LC/UPC Connector, Singlemode, Blue



Fiber indoor cable, 1.6 mm diameter, Plenum rated, Zipcord 2-fiber, Singlemode G.657.A2/B2, Feet jacket marking, Yellow jacket color

## Product Classification

<b>Regional Availability</b>	Asia   Australia/New Zealand   Latin America   Middle East/Africa   North America
<b>Portfolio</b>	CommScope®
<b>Product Type</b>	Fiber indoor cable
<b>Product Series</b>	P-ZC

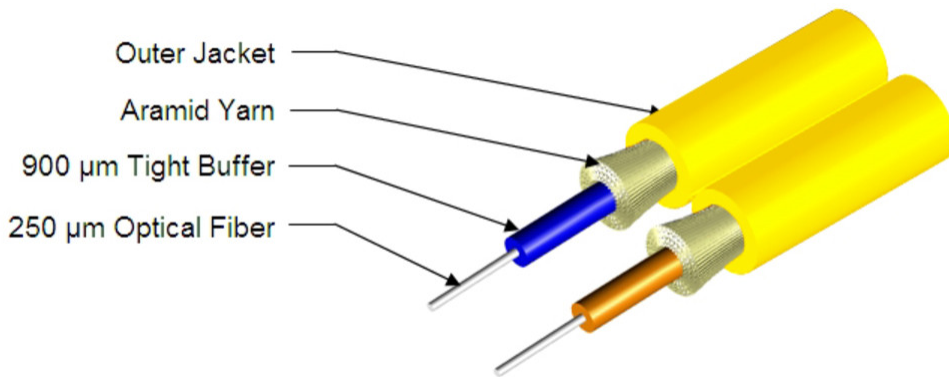
## General Specifications

<b>Cable Type</b>	Cordage
<b>Construction Type</b>	Non-armored
<b>Subunit Type</b>	Gel-free
<b>Jacket Color</b>	Yellow
<b>Jacket Marking</b>	Feet
<b>Total Fiber Count</b>	2

## Dimensions

<b>Height Over Jacket</b>	1.7 mm   0.067 in
<b>Width Over Jacket</b>	3.5 mm   0.138 in

## Representative Image



## Mechanical Specifications

<b>Minimum Bend Radius, loaded</b>	38 mm   1.496 in
<b>Minimum Bend Radius, unloaded</b>	15 mm   0.591 in
<b>Tensile Load, long term, maximum</b>	53 N   11.915 lbf
<b>Tensile Load, short term, maximum</b>	178 N   40.016 lbf
<b>Compression</b>	10 N/mm   57.101 lb/in
<b>Compression Test Method</b>	FOTP-41   IEC 60794-1 E3
<b>Flex</b>	300 cycles
<b>Flex Test Method</b>	FOTP-104   IEC 60794-1 E6
<b>Impact</b>	0.74 N-m   6.55 in lb
<b>Impact Test Method</b>	FOTP-25   IEC 60794-1 E4
<b>Strain</b>	See long and short term tensile loads
<b>Strain Test Method</b>	FOTP-33   IEC 60794-1 E1
<b>Twist</b>	10 cycles
<b>Twist Test Method</b>	FOTP-85   IEC 60794-1 E7
<b>Vertical Rise, maximum</b>	500 m   1,640.42 ft

## Optical Specifications

<b>Fiber Type</b>	G.657.A2/B2   G.657.A2/B2
-------------------	---------------------------

## Environmental Specifications

<b>Installation temperature</b>	0 °C to +70 °C (+32 °F to +158 °F)
---------------------------------	------------------------------------

# 760238069 | P-002-ZC-8G-F16YL

---

<b>Operating Temperature</b>	-20 °C to +70 °C (-4 °F to +158 °F)
<b>Storage Temperature</b>	-40 °C to +70 °C (-40 °F to +158 °F)
<b>Cable Qualification Standards</b>	ANSI/ICEA S-83-596   Telcordia GR-409
<b>Environmental Space</b>	Plenum
<b>Flame Test Listing</b>	NEC OFNP (ETL) and c(ETL)
<b>Flame Test Method</b>	NFPA 130   NFPA 262

## Environmental Test Specifications

<b>Heat Age</b>	-20 °C to +85 °C (-4 °F to +185 °F)
<b>Heat Age Test Method</b>	IEC 60794-1 F9
<b>Low High Bend</b>	-20 °C to +70 °C (-4 °F to +158 °F)
<b>Low High Bend Test Method</b>	FOTP-37   IEC 60794-1 E11
<b>Temperature Cycle</b>	-20 °C to +70 °C (-4 °F to +158 °F)
<b>Temperature Cycle Test Method</b>	FOTP-3   IEC 60794-1 F1

## Packaging and Weights

<b>Cable weight</b>	6 kg/km   4.032 lb/kft
---------------------	------------------------

## Regulatory Compliance/Certifications

<b>Agency</b>	<b>Classification</b>
CHINA-ROHS	Below maximum concentration value
ISO 9001:2015	Designed, manufactured and/or distributed under this quality management system
REACH-SVHC	Compliant as per SVHC revision on <a href="http://www.commscope.com/ProductCompliance">www.commscope.com/ProductCompliance</a>
ROHS	Compliant
UK-ROHS	Compliant

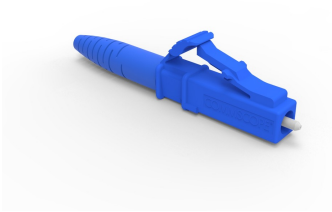


## \* Footnotes

**Operating Temperature** Specification applicable to non-terminated bulk fiber cable

# 860655464

---



## LC/UPC Connector, Singlemode, Blue

### Product Classification

<b>Regional Availability</b>	Asia   Australia/New Zealand   EMEA   Latin America   North America
<b>Portfolio</b>	CommScope®
<b>Product Type</b>	Fiber connector

### General Specifications

<b>Color, boot</b>	Blue
<b>Color, housing</b>	Blue
<b>Interface</b>	LC/UPC

### Dimensions

<b>Length</b>	41.6 mm   1.638 in
<b>Compatible Cable Diameter</b>	1.6 mm   0.063 in   2 mm   0.079 in
<b>Dimensional Standards</b>	IEC 61754-20   TIA-604-10

### Material Specifications

<b>Ferrule Material</b>	Zirconia
-------------------------	----------

### Mechanical Specifications

<b>Cable Retention Strength, maximum</b>	11.24 lb @ 0 °
--	----------------

### Optical Specifications

<b>Fiber Mode</b>	Singlemode
<b>Insertion Loss Change, mating</b>	0.2 dB
<b>Optical Components Standard</b>	ANSI/TIA-568. 3-D   IEC 61753-1
<b>Insertion Loss Change, temperature</b>	0.2 dB
<b>Insertion Loss, ULL, maximum</b>	0.25 dB
<b>Return Loss, minimum</b>	55 dB

## \* Footnotes

**Insertion Loss Change, mating** TIA-568: Maximum insertion loss change after 500 matings

**Insertion Loss Change, temperature** Maximum insertion loss change from -10 °C to +60 °C (+14 °F to +140 °F)