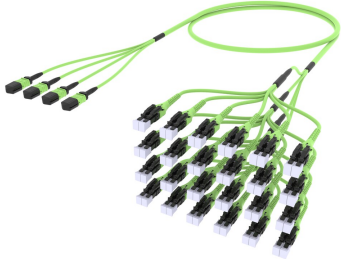


ULVMPLUCH

Base Product



Ultra Low Loss ULL LazrSPEED® 550 OM5 MPO(Unpinned) to LC/UPC Uniboot Ruggedized fanout Cable, 48-Fiber, Plenum, 12 fiber PmP 2.0 mm Dca

Product Classification

Regional Availability	Asia Australia/New Zealand Europe Latin America Middle East/Africa North America
Portfolio	CommScope®
Product Type	Ruggedized fanout
Product Brand	SYSTIMAX ULL
Ordering Note	For additional jacket colors, please contact a CommScope Sales Representative For lengths greater than 999 ft (304 m), orders must be in meters Minimum length may vary based on cable configuration

General Specifications

Color, boot A	Black
Color, connector A	Black
Color, boot B	Blue
Color, connector B	Black
Construction Type	Stranded
Furcation Color	Lime green
Interface, Connector A	MPO-12/UPC Female
Interface, Connector B	LC/UPC
Interface Feature, connector B	Uniboot
Jacket Color	Lime green
Polarity	Method B Enhanced (ULL)
Fibers per Subunit, quantity	12
Total Fibers, quantity	48

Dimensions

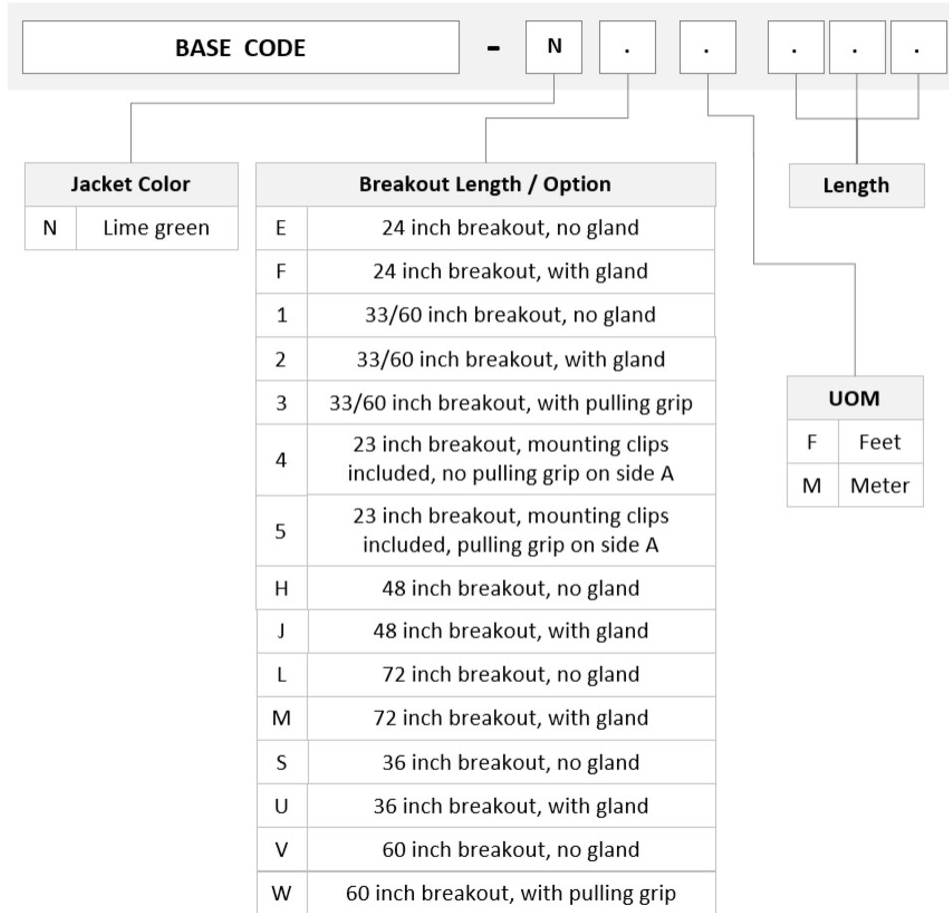
Cable Assembly Length Range (m)	3 – 999
--	---------

ULVMPLUCH

Cable Assembly Length Range (ft)

10 – 999

Ordering Tree



Optical Specifications

Fiber Mode	Multimode
Fiber Type	OM5, LazrSPEED®

Environmental Specifications

Operating Temperature	-10 °C to +60 °C (+14 °F to +140 °F)
EN50575 CPR Cable EuroClass Fire Performance	Dca
Environmental Space	Indoor Plenum

Regulatory Compliance/Certifications

ULVMPLUCH

Agency

Classification

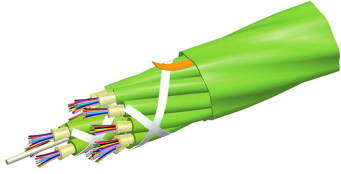
CHINA-ROHS	Below maximum concentration value
ISO 9001:2015	Designed, manufactured and/or distributed under this quality management system
REACH-SVHC	Compliant as per SVHC revision on www.commscope.com/ProductCompliance
ROHS	Compliant
UK-ROHS	Compliant



Included Products

760242119 P-048-MP-5G-F12LM/20T	-	Fiber indoor cable, LazrSPEED® Plenum MPO Trunk, 48 fiber multi-unit with 12 fiber subunits, Multimode OM5, Gel-free, Feet jacket marking, Lime green jacket color
860658162	-	2.0 mm LC Uniboot GEN 1.5, Lime Green
860659014	-	MPO12, ULL, FEMALE, OM5, LIME, 2MM

760242119 | P-048-MP-5G-F12LM/20T



Fiber indoor cable, LazrSPEED® Plenum MPO Trunk, 48 fiber multi-unit with 12 fiber subunits, Multimode OM5, Gel-free, Feet jacket marking, Lime green jacket color

Product Classification

Regional Availability	Asia Australia/New Zealand Latin America Middle East /Africa North America
Portfolio	CommScope®
Product Type	Fiber indoor cable
Product Series	P-MP

General Specifications

Cable Type	MPO trunk cable
Construction Type	Non-armored
Subunit Type	Gel-free
Jacket Color	Lime green
Jacket Marking	Feet
Subunit, quantity	4
Fibers per Subunit, quantity	12
Total Fiber Count	48

Dimensions

Buffer Tube/Subunit Diameter	2 mm 0.079 in
Diameter Over Jacket	7.7 mm 0.303 in

Representative Image



Mechanical Specifications

Minimum Bend Radius, loaded	116 mm 4.567 in
Minimum Bend Radius, unloaded	77 mm 3.031 in
Tensile Load, long term, maximum	200 N 44.962 lbf
Tensile Load, short term, maximum	667 N 149.948 lbf
Compression	10 N/mm 57.101 lb/in
Compression Test Method	FOTP-41 IEC 60794-1 E3
Flex	300 cycles
Flex Test Method	FOTP-104 IEC 60794-1 E6
Impact	0.74 N-m 6.55 in lb
Impact Test Method	FOTP-25 IEC 60794-1 E4
Strain	See long and short term tensile loads
Strain Test Method	FOTP-33 IEC 60794-1 E1
Twist	10 cycles
Twist Test Method	FOTP-85 IEC 60794-1 E7
Vertical Rise, maximum	316 m 1,036.745 ft

Optical Specifications

Fiber Type	OM5, LazrSPEED® wideband OM5, LazrSPEED® wideband
-------------------	---

Environmental Specifications

Installation temperature	0 °C to +70 °C (+32 °F to +158 °F)
Operating Temperature	0 °C to +70 °C (+32 °F to +158 °F)

760242119 | P-048-MP-5G-F12LM/20T

Storage Temperature	-40 °C to +70 °C (-40 °F to +158 °F)
Cable Qualification Standards	ANSI/ICEA S-83-596 Telcordia GR-409
Environmental Space	Plenum
Flame Test Listing	NEC OFNP (ETL) and c(ETL)
Flame Test Method	NFPA 130 NFPA 262

Environmental Test Specifications

Heat Age	0 °C to +85 °C (+32 °F to +185 °F)
Heat Age Test Method	IEC 60794-1 F9
Low High Bend	0 °C to +70 °C (+32 °F to +158 °F)
Low High Bend Test Method	FOTP-37 IEC 60794-1 E11
Temperature Cycle	0 °C to +70 °C (+32 °F to +158 °F)
Temperature Cycle Test Method	FOTP-3 IEC 60794-1 F1

Packaging and Weights

Cable weight	65 kg/km 43.678 lb/kft
---------------------	--------------------------

Regulatory Compliance/Certifications

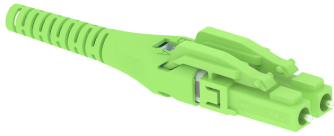
Agency	Classification
ISO 9001:2015	Designed, manufactured and/or distributed under this quality management system

* Footnotes

Operating Temperature Specification applicable to non-terminated bulk fiber cable

860658162

2.0 mm LC Uniboot GEN 1.5, Lime Green



Product Classification

Regional Availability Asia | Australia/New Zealand | EMEA | Latin America | North America
Product Type Fiber connector boot

General Specifications

Color Lime green

Dimensions

Compatible Cable Diameter 2 mm | 0.079 in

Packaging and Weights

Packaging Type Bag

Regulatory Compliance/Certifications

Agency	Classification
CHINA-ROHS	Below maximum concentration value
REACH-SVHC	Compliant as per SVHC revision on www.commscope.com/ProductCompliance
ROHS	Compliant
UK-ROHS	Compliant



860659014



MPO12, ULL, FEMALE, OM5, LIME, 2MM

Product Classification

Regional Availability	Asia Australia/New Zealand EMEA Latin America North America
Portfolio	CommScope®
Product Type	Fiber connector
Product Brand	LazrSPEED®

General Specifications

Color	Lime green
Color, boot	Black
Ferrule Geometry	Flat
Interface	MPO/UPC Female
Interface Feature	Unpinned
Total Fiber Count	12

Dimensions

Length	60.1 mm 2.366 in
Compatible Cable Diameter	2 mm 0.079 in

Material Specifications

Ferrule Material	Polymer
-------------------------	---------

Mechanical Specifications

Cable Retention Strength, maximum	11.24 lb @ 0 °
--	----------------

Optical Specifications

Fiber Mode	Singlemode
Fiber Type	G.652.D and G.657.A1, TeraSPEED® OS2
Insertion Loss Change, mating	0.2 dB
Optical Components Standard	ANSI/TIA-568-C.3

860659014

Insertion Loss, maximum 0.2 dB

Return Loss, minimum 27 dB

Packaging and Weights

Packaging quantity 1

* Footnotes

Insertion Loss Change, mating TIA-568: Maximum insertion loss change after 500 matings