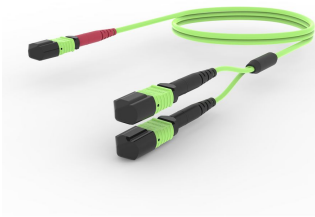


# URV2CMPHF



Ultra Low Loss OM5, MPO24 (Unpinned) to MPO12 (Unpinned), Fiber Extension Cable Assembly, 24-Fiber, Low Smoke Zero Halogen

## Product Classification

Regional Availability	Australia/New Zealand   Europe   Latin America   Middle East/Africa
Portfolio	CommScope®
Product Type	Fiber array cable assembly
Product Brand	SYSTIMAX ULL
Ordering Note	Can only be used with CXP transceivers   For additional jacket colors, please contact a CommScope Sales Representative   For lengths greater than 999 ft (304 m), orders must be in meters   Minimum length may vary based on cable configuration

## General Specifications

Color, boot A	Red
Color, boot B	Black
Color, connector A	Lime green
Color, connector B	Lime green
Construction Type	Stranded
Furcation Color	Lime green
Interface, Connector A	MPO-24/UPC Female
Interface Feature, connector A	QSFP configuration
Interface, Connector B	MPO-12/UPC Female
Jacket Color	Lime green
Polarity	Method B Enhanced (ULL)
Total Fibers, quantity	24

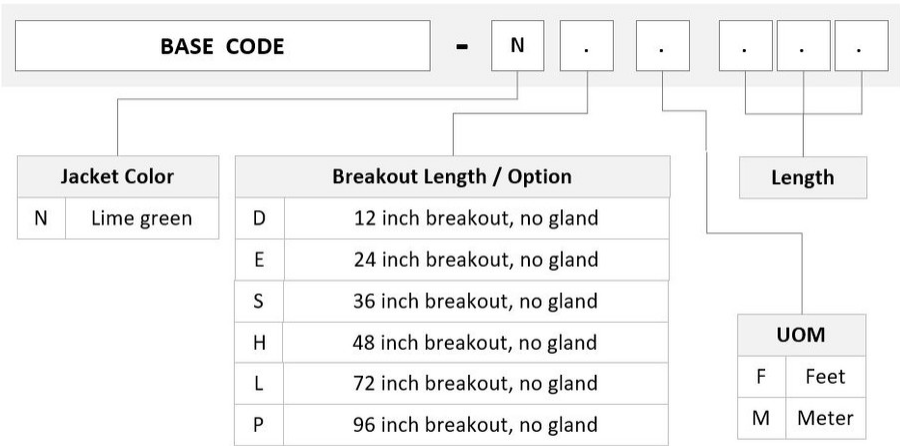
## Dimensions

Cable Assembly Length Range (m)	3 – 999
---------------------------------	---------

# URV2CMPHF

Cable Assembly Length Range (ft)10 – 999

## Ordering Tree



## Mechanical Specifications

Cable Retention Strength, maximum11.24 lb @ 0 ° | 4.40 lb @ 90 °

## Optical Specifications

Fiber ModeMultimode  
Fiber TypeOM5, LazrSPEED®

## Environmental Specifications

Operating Temperature-10 °C to +60 °C (+14 °F to +140 °F)  
Environmental SpaceIndoor | Low Smoke Zero Halogen (LSZH)

## Regulatory Compliance/Certifications

AgencyClassification  
ISO 9001:2015Designed, manufactured and/or distributed under this quality management system



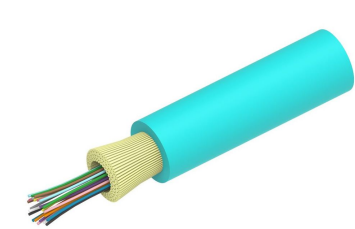
## Included Products

760235987 – Fiber indoor cable, LazrSPEED® Low Smoke Zero Halogen Riser Light Duty for MPO

# URV2CMPHF

---

N-024-MP-5G-F36LM/D		Patchcords, 24 fiber, Multimode OM5, Gel-free, Feet jacket marking, Lime green jacket color, Dca Flame rating
860366210	-	MPO12, ULTRA LOW LOSS, FEMALE, OM3/4, AQUA, 3mm
860634624	-	LazrSPEED® Elite MPO Female 24 Fiber Connector, lime green



Fiber indoor cable, LazrSPEED® Low Smoke Zero Halogen Riser Light Duty for MPO Patchcords, 24 fiber, Multimode OM5, Gel-free, Feet jacket marking, Lime green jacket color, Dca Flame rating

## Product Classification

Regional Availability	Asia   Australia/New Zealand   EMEA   Latin America   North America
Portfolio	CommScope®
Product Type	Fiber indoor cable
Product Series	N-MP

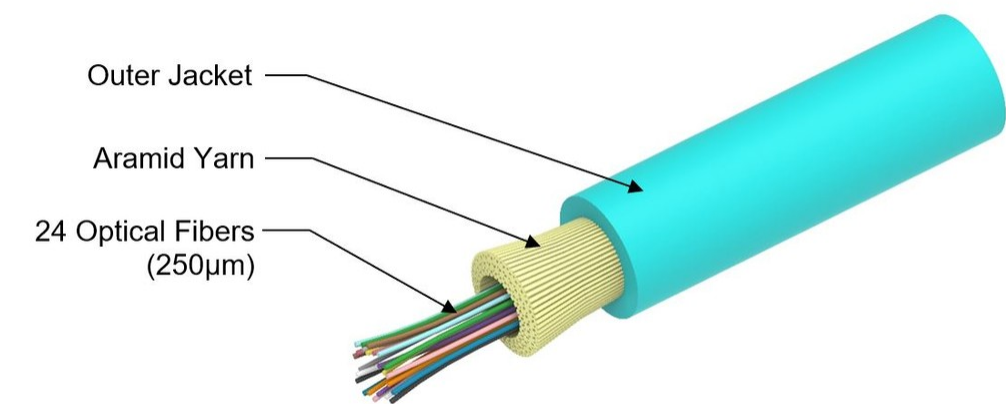
## General Specifications

Cable Type	MPO trunk cable
Construction Type	Non-armored
Fiber Type, quantity	24
Jacket Color	Lime green
Jacket Marking	Feet
Subunit Type	Gel-free
Total Fiber Count	24

## Dimensions

Diameter Over Jacket	3.6 mm   0.142 in
----------------------	-------------------

## Representative Image



## Mechanical Specifications

Minimum Bend Radius, loaded	54 mm   2.126 in
Minimum Bend Radius, unloaded	29 mm   1.142 in
Tensile Load, long term, maximum	120 N   26.977 lbf
Tensile Load, short term, maximum	400 N   89.924 lbf
Compression	4 N/mm   22.841 lb/in
Compression Test Method	FOTP-41   IEC 60794-1 E3
Flex	300 cycles
Flex Test Method	FOTP-104   IEC 60794-1 E6
Impact	0.74 N-m   6.55 in lb
Impact Test Method	FOTP-25   IEC 60794-1 E4
Strain	See long and short term tensile loads
Strain Test Method	FOTP-33   IEC 60794-1 E1
Twist	10 cycles
Twist Test Method	FOTP-85   IEC 60794-1 E7
Vertical Rise, maximum	500 m   1,640.42 ft

## Optical Specifications

Fiber Type	OM5, LazrSPEED® wideband   OM5, LazrSPEED® wideband
------------	---

## Environmental Specifications

Installation temperature	0 °C to +60 °C (+32 °F to +140 °F)
Operating Temperature	0 °C to +70 °C (+32 °F to +158 °F)

<b>Storage Temperature</b>	-40 °C to +70 °C (-40 °F to +158 °F)
<b>Cable Qualification Standards</b>	ANSI/ICEA S-83-596   Telcordia GR-409
<b>EN50575 CPR Cable EuroClass Fire Performance</b>	Dca
<b>EN50575 CPR Cable EuroClass Smoke Rating</b>	s1a
<b>EN50575 CPR Cable EuroClass Droplets Rating</b>	d0
<b>EN50575 CPR Cable EuroClass Acidity Rating</b>	a1
<b>Environmental Space</b>	Low Smoke Zero Halogen (LSZH)   Riser
<b>Flame Test Listing</b>	NEC OFNR-ST1 (ETL) and c(ETL)
<b>Flame Test Method</b>	IEC 60332-3   IEC 60754-2   IEC 61034-2   IEEE 383   UL 1666   UL 1685

## Environmental Test Specifications

<b>Heat Age</b>	0 °C to +85 °C (+32 °F to +185 °F)
<b>Heat Age Test Method</b>	IEC 60794-1 F9
<b>Low High Bend</b>	0 °C to +70 °C (+32 °F to +158 °F)
<b>Low High Bend Test Method</b>	FOTP-37   IEC 60794-1 E11
<b>Temperature Cycle</b>	0 °C to +70 °C (+32 °F to +158 °F)
<b>Temperature Cycle Test Method</b>	FOTP-3   IEC 60794-1 F1

## Packaging and Weights

<b>Cable weight</b>	11.8 kg/km   7.929 lb/kft
---------------------	---------------------------

## Regulatory Compliance/Certifications

<b>Agency</b>	<b>Classification</b>
CENELEC	EN 50575 compliant, Declaration of Performance (DoP) available
CHINA-ROHS	Below maximum concentration value
ISO 9001:2015	Designed, manufactured and/or distributed under this quality management system
REACH-SVHC	Compliant as per SVHC revision on <a href="http://www.commscope.com/ProductCompliance">www.commscope.com/ProductCompliance</a>
ROHS	Compliant



## \* Footnotes

<b>Operating Temperature</b>	Specification applicable to non-terminated bulk fiber cable
------------------------------	---

MP012, ULTRA LOW LOSS, FEMALE, OM3/4, AQUA, 3mm

Product Classification

Regional Availability	Asia   Australia/New Zealand   EMEA   Latin America   North America
Portfolio	CommScope®
Product Type	Fiber connector
Product Brand	LazrSPEED®

General Specifications

Color	Aqua
Color, boot	Black
Ferrule Geometry	Flat
Interface	MPO/UPC Female
Interface Feature	Unpinned
Total Fiber Count	12

Dimensions

Length	60.1 mm   2.366 in
Compatible Cable Diameter	3 mm   0.118 in

Material Specifications

Ferrule Material	Polymer
------------------	---------

Mechanical Specifications

Cable Retention Strength, maximum	11.24 lb @ 0 °
-----------------------------------	----------------

Optical Specifications

Fiber Mode	Multimode
Fiber Type	OM3   OM4
Insertion Loss Change, mating	0.3 dB
Optical Components Standard	ANSI/TIA-568-C.3
Insertion Loss Change, temperature	0.3 dB
Insertion Loss, maximum	0.2 dB
Return Loss, minimum	27 dB

Packaging and Weights

**Packaging quantity** 1

Regulatory Compliance/Certifications

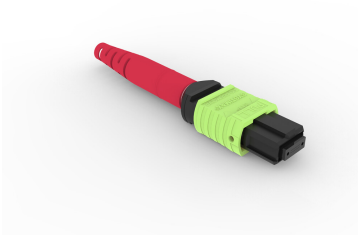
Agency	Classification
CHINA-ROHS	Below maximum concentration value
ISO 9001:2015	Designed, manufactured and/or distributed under this quality management system
REACH-SVHC	Compliant as per SVHC revision on <a href="http://www.commscope.com/ProductCompliance">www.commscope.com/ProductCompliance</a>
ROHS	Compliant



\* Footnotes

<b>Insertion Loss Change, mating</b>	TIA-568: Maximum insertion loss change after 500 matings
<b>Insertion Loss Change, temperature</b>	Maximum insertion loss change from -10 °C to +60 °C (+14 °F to +140 °F)





LazrSPEED® Elite MPO Female 24 Fiber Connector, lime green

Product Classification

Regional Availability	Asia   Australia/New Zealand   EMEA   Latin America   North America
Portfolio	CommScope®
Product Type	Fiber connector
Product Brand	LazrSPEED®

General Specifications

Color	Lime green
Color, boot	Red
Ferrule Geometry	Flat
Interface	MPO/UPC Female
Interface Feature	Unpinned
Total Fiber Count	24

Dimensions

Length	60.1 mm   2.366 in
Compatible Cable Diameter	3 mm   0.118 in

Material Specifications

Ferrule Material	Polymer
------------------	---------

Mechanical Specifications

Cable Retention Strength, maximum	11.24 lb @ 0 °
-----------------------------------	----------------

Optical Specifications

Fiber Mode	Multimode
Fiber Type	OM5, LazrSPEED® wideband
Insertion Loss Change, mating	0.3 dB

Optical Components Standard	ANSI/TIA-568-C.3
Insertion Loss Change, temperature	0.3 dB
Insertion Loss, maximum	0.27 dB
Insertion Loss, ULL, maximum	0.2 dB
Return Loss, minimum	27 dB

Packaging and Weights

Packaging quantity	1
--------------------	---

Regulatory Compliance/Certifications

Agency	Classification
CHINA-ROHS	Below maximum concentration value
ISO 9001:2015	Designed, manufactured and/or distributed under this quality management system
REACH-SVHC	Compliant as per SVHC revision on <a href="http://www.commscope.com/ProductCompliance">www.commscope.com/ProductCompliance</a>
ROHS	Compliant



\* Footnotes

Insertion Loss Change, mating	TIA-568: Maximum insertion loss change after 500 matings
Insertion Loss Change, temperature	Maximum insertion loss change from -10 °C to +60 °C (+14 °F to +140 °F)