

2UPX210B-T2



4-port multibeam antenna, 4x 694–896 MHz, 2x 37° HPBW, 2x RET with manual override.

- Integrated Internal Remote Electrical Tilt (RET), with independent control of electrical tilt with manual override on both beams
- Each port has an integrated bias tee, and each beam has its own smart switch that automatically selects between bias tee or AISG inputs according to a predetermined priority table
- Single panel design supporting two separate beams perfectly optimized at horizontal pointing angles of +27 degrees and –27 degrees from boresight

General Specifications

Antenna Type	Multibeam
Band	Single band
Grounding Type	RF connector body grounded to reflector and mounting bracket
Performance Note	Outdoor usage Wind loading figures are validated by wind tunnel measurements described in white paper WP-112534-EN
Radome Material	Fiberglass, UV resistant
Radiator Material	Copper Low loss circuit board
Reflector Material	Aluminum
RF Connector Interface	7-16 DIN Female
RF Connector Location	Bottom
RF Connector Quantity, high band	0
RF Connector Quantity, mid band	0
RF Connector Quantity, low band	4
RF Connector Quantity, total	4

Remote Electrical Tilt (RET) Information

RET Interface	8-pin DIN Female 8-pin DIN Male
RET Interface, quantity	1 female 2 male
Input Voltage	10–30 Vdc
Internal Bias Tee	Port 1 Port 2 Port 3 Port 4
Internal RET	Low band (2)
Power Consumption, idle state, maximum	2 W
Power Consumption, normal conditions, maximum	13 W

2UPX210B-T2

Protocol 3GPP/AISG 2.0 (Single RET)

Dimensions

Width 640 mm | 25.197 in
Depth 235 mm | 9.252 in
Length 2533 mm | 99.724 in
Net Weight, without mounting kit 47 kg | 103.617 lb

Electrical Specifications

Impedance 50 ohm
Operating Frequency Band 694 – 896 MHz
Polarization ±45°
Total Input Power, maximum 700 W @ 50 °C

Electrical Specifications

Frequency Band, MHz	694–806	806–896
Gain, dBi	17.9	18.7
Beam Centers, Horizontal, degrees	±27	±27
Beamwidth, Horizontal, degrees	39	36
Beamwidth, Vertical, degrees	9.6	8.4
Beam Tilt, degrees	0–10	0–10
USLS (First Lobe), dB	21	21
Front-to-Back Ratio at 180°, dB	34	40
Isolation, Cross Polarization, dB	25	25
Isolation, Inter-band, dB	18	18
VSWR Return loss, dB	1.43 15.0	1.43 15.0
PIM, 3rd Order, 2 x 20 W, dBc	-150	-150
Input Power per Port at 50°C, maximum, watts	200	200

Mechanical Specifications

Wind Loading @ Velocity, frontal 1,102.0 N @ 150 km/h (247.7 lbf @ 150 km/h)
Wind Loading @ Velocity, lateral 372.0 N @ 150 km/h (83.6 lbf @ 150 km/h)
Wind Loading @ Velocity, maximum 1,497.0 N @ 150 km/h (336.5 lbf @ 150 km/h)
Wind Loading @ Velocity, rear 1,135.0 N @ 150 km/h (255.2 lbf @ 150 km/h)
Wind Speed, maximum 200 km/h (124 mph)

2UPX210B-T2

Packaging and Weights

Width, packed	797 mm 31.378 in
Depth, packed	402 mm 15.827 in
Length, packed	2684 mm 105.669 in
Weight, gross	67 kg 147.71 lb

Regulatory Compliance/Certifications

Agency	Classification
CHINA-ROHS	Above maximum concentration value
ISO 9001:2015	Designed, manufactured and/or distributed under this quality management system
ROHS	Compliant/Exempted
UK-ROHS	Compliant/Exempted



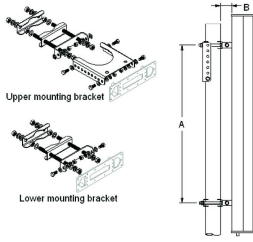
Included Products

T-029-GL-E	-	Adjustable Tilt Pipe Mounting Kit for 2.362"-4.5" (60-115mm) OD round members for panel antennas. Includes 2 clamp sets.
------------	---	--

* Footnotes

Performance Note	Severe environmental conditions may degrade optimum performance
-------------------------	---

T-029-GL-E



Adjustable Tilt Pipe Mounting Kit for 2.362"-4.5" (60-115mm) OD round members for panel antennas. Includes 2 clamp sets.

Product Classification

Product Type Adjustable tilt mounting kit

General Specifications

Application Outdoor

Color Silver

Dimensions

Compatible Length, maximum 2850 mm | 112.205 in

Compatible Length, minimum 1500 mm | 59.055 in

Compatible Diameter, maximum 115 mm | 4.528 in

Compatible Diameter, minimum 60 mm | 2.362 in

Antenna-to-Pipe Distance 85 mm | 3.346 in

Bracket-to-Bracket Distance 1400 mm | 55.118 in

Weight, net 6 kg | 13.228 lb

Material Specifications

Material Type Galvanized steel

Mechanical Specifications

Mechanical Tilt 0°-8°

Packaging and Weights

Included Brackets | Hardware

Packaging quantity 1

Regulatory Compliance/Certifications

Agency	Classification
CE	Compliant with the relevant CE product directives

T-029-GL-E

CHINA-ROHS	Below maximum concentration value
ISO 9001:2015	Designed, manufactured and/or distributed under this quality management system
REACH-SVHC	Compliant as per SVHC revision on www.andrew.com/ProductCompliance
ROHS	Compliant
UK-ROHS	Compliant

