

# CV65CSX-M | CV65CSX-2X2



4-port sector antenna, 2x 790–960 and 2x 1710–2690 MHz, 65° HPBW, RET compatible

- Two DualPol® antennas under one radome
- Each antenna is independently capable of field adjustable electrical tilt
- Fully compatible with Andrew Teletilt® remote control system

## OBSOLETE

This product was discontinued on: November 30, 2023

## General Specifications

<b>Antenna Type</b>	Sector
<b>Band</b>	Multiband
<b>Color</b>	Light Gray (RAL 7035)
<b>Grounding Type</b>	RF connector inner conductor and body grounded to reflector and mounting bracket
<b>Performance Note</b>	Outdoor usage   Wind loading figures are validated by wind tunnel measurements described in white paper WP-112534-EN
<b>Radome Material</b>	Fiberglass, UV resistant
<b>Radiator Material</b>	Copper   Low loss circuit board
<b>Reflector Material</b>	Aluminum
<b>RF Connector Interface</b>	7-16 DIN Female
<b>RF Connector Location</b>	Bottom
<b>RF Connector Quantity, high band</b>	2
<b>RF Connector Quantity, mid band</b>	0
<b>RF Connector Quantity, low band</b>	2
<b>RF Connector Quantity, total</b>	4

## Remote Electrical Tilt (RET) Information

<b>Model with Factory Installed AISG 2.0 Actuator</b>	CV65CSX-2X2
---	-------------

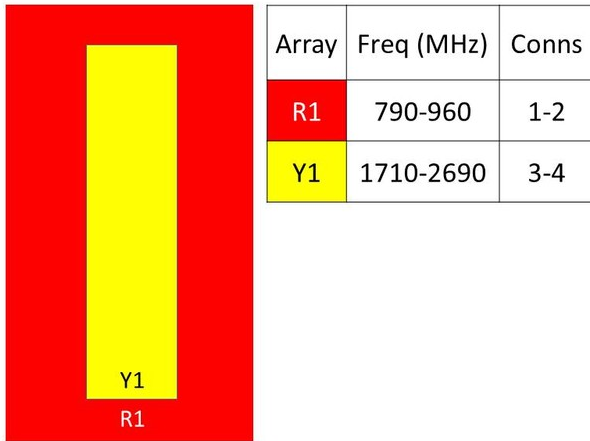
## Dimensions

<b>Width</b>	301 mm   11.85 in
--------------	-------------------

# CV65CSX-M | CV65CSX-2X2

<b>Depth</b>	181 mm   7.126 in
<b>Length</b>	2453 mm   96.575 in
<b>Net Weight, without mounting kit</b>	21.2 kg   46.738 lb

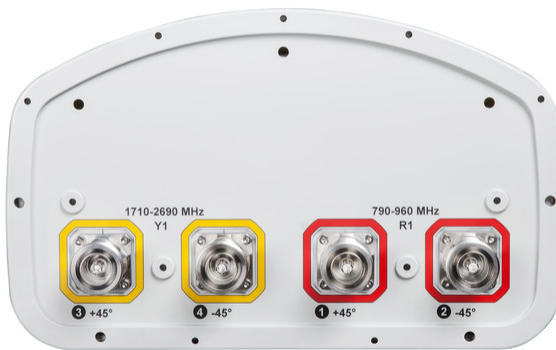
## Array Layout



Bottom

(Sizes of colored boxes are not true depictions of array sizes)

## Port Configuration



# CV65CSX-M | CV65CSX-2X2

## Electrical Specifications

<b>Impedance</b>	50 ohm
<b>Operating Frequency Band</b>	1710 – 2690 MHz   790 – 960 MHz
<b>Polarization</b>	±45°

## Electrical Specifications

Frequency Band, MHz	790–896	870–960	1710–1880	1850–1990	1920–2180	2300–2500	2500–2690
<b>Gain, dBi</b>	16.7	16.8	17.6	18	18.1	18.3	18.6
<b>Beamwidth, Horizontal, degrees</b>	63	62	70	67	67	56	60
<b>Beamwidth, Vertical, degrees</b>	8.1	7.6	5.6	5.3	5.1	4.4	4.1
<b>Beam Tilt, degrees</b>	0–10	0–10	2–12	2–12	2–12	2–12	2–12
<b>USLS (First Lobe), dB</b>	15	15	16	16	16	17	19
<b>Front-to-Back Ratio at 180°, dB</b>	30	30	27	28	23	27	30
<b>CPR at Boresight, dB</b>	27	25	19	20	20	16	19
<b>CPR at Sector, dB</b>	10	10	10	8	9	3	6
<b>Isolation, Cross Polarization, dB</b>	28	28	28	28	28	28	28
<b>Isolation, Inter-band, dB</b>	30	30	30	30	30	30	30
<b>VSWR   Return loss, dB</b>	1.5 14.0	1.5 14.0	1.5 14.0	1.5 14.0	1.5 14.0	1.5 14.0	1.5 14.0
<b>PIM, 3rd Order, 2 x 20 W, dBc</b>	-150	-150	-150	-150	-150	-150	-150
<b>Input Power per Port, maximum, watts</b>	350	350	350	350	350	300	300

## Mechanical Specifications

<b>Wind Loading @ Velocity, frontal</b>	396.0 N @ 150 km/h (89.0 lbf @ 150 km/h)
<b>Wind Loading @ Velocity, lateral</b>	333.0 N @ 150 km/h (74.9 lbf @ 150 km/h)
<b>Wind Loading @ Velocity, maximum</b>	762.0 N @ 150 km/h (171.3 lbf @ 150 km/h)
<b>Wind Loading @ Velocity, rear</b>	401.0 N @ 150 km/h (90.1 lbf @ 150 km/h)
<b>Wind Speed, maximum</b>	241 km/h (150 mph)

## Packaging and Weights

<b>Width, packed</b>	441 mm   17.362 in
<b>Depth, packed</b>	337 mm   13.268 in

# CV65CSX-M | CV65CSX-2X2

---

**Length, packed** 2584 mm | 101.732 in

**Weight, gross** 37.3 kg | 82.232 lb

## Regulatory Compliance/Certifications

Agency	Classification
CE	Compliant with the relevant CE product directives
CHINA-ROHS	Below maximum concentration value
ISO 9001:2015	Designed, manufactured and/or distributed under this quality management system
REACH-SVHC	Compliant as per SVHC revision on <a href="http://www.andrew.com/ProductCompliance">www.andrew.com/ProductCompliance</a>
ROHS	Compliant
UK-ROHS	Compliant



## Included Products

- BSAMNT-OFFSET – Forward Offset Pipe Mounting Kit for 4.5 in (114.3 mm) OD round members

## \* Footnotes

**Performance Note** Severe environmental conditions may degrade optimum performance