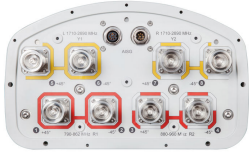


DGVV65A-FL-4XR



8-port sector antenna, 2x 790–862, 2x 880–960 and 4 x 1710–2690 MHz, 65° HPBW. 4x RET

- All Internal RET actuators are connected in “Cascaded SRET” configuration
- Excellent RF pattern control over the full operating band and tilt range for desired coverage and interference containment

OBSOLETE

This product was discontinued on: March 27, 2020

General Specifications

Antenna Type	Sector
Band	Multiband
Color	Light Gray (RAL 7035)
Grounding Type	RF connector inner conductor and body grounded to reflector and mounting bracket
Performance Note	Outdoor usage Wind loading figures are validated by wind tunnel measurements described in white paper WP-112534-EN
Radome Material	Fiberglass, UV resistant
Radiator Material	Aluminum Low loss circuit board
Reflector Material	Aluminum
RF Connector Interface	7-16 DIN Female
RF Connector Location	Bottom
RF Connector Quantity, high band	4
RF Connector Quantity, low band	4
RF Connector Quantity, total	8

Remote Electrical Tilt (RET) Information

RET Interface	8-pin DIN Female 8-pin DIN Male
RET Interface, quantity	1 female 1 male
Input Voltage	10–30 Vdc
Internal RET	High band (2) Low band (2)

DGVV65A-FL-4XR

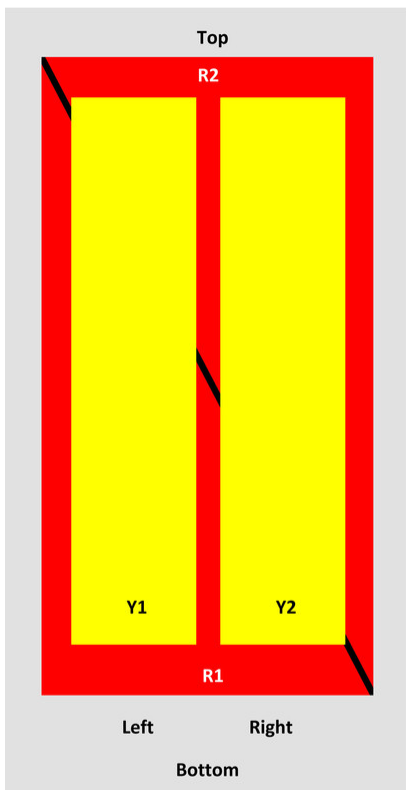
Power Consumption, idle state, maximum	2 W
Power Consumption, normal conditions, maximum	13 W
Protocol	3GPP/AISG 2.0 (Single RET)

Dimensions

Width	301 mm 11.85 in
Depth	180.5 mm 7.106 in
Length	1,416.5 mm 55.768 in
Net Weight, without mounting kit	25 kg 55.115 lb

Array Layout

DGVV65A-FL-4XR



Array	Freq (MHz)	Conns	RET (SRET)	AISG RET UID
R1	790-862	1-2	1	ANXXXXXXXXXXXXX1
R2	880-960	3-4	2	ANXXXXXXXXXXXXX2
Y1	1710-2690	5-6	3	ANXXXXXXXXXXXXX3
Y2	1710-2690	7-8	4	ANXXXXXXXXXXXXX4

View from the front of the antenna
(Sizes of colored boxes are not true depictions of array sizes)

Electrical Specifications

DGVV65A-FL-4XR

Impedance	50 ohm
Operating Frequency Band	1710 – 2690 MHz 790 – 862 MHz 880 – 960 MHz
Polarization	±45°

Electrical Specifications

Frequency Band, MHz	790–862	880–960	1710–1880	1850–1990	1920–2180	2300–2500	2500–2690
Gain, dBi	14	14	17.1	17.4	17.7	18.1	18.2
Beamwidth, Horizontal, degrees	70	69	61	62	64	62	58
Beamwidth, Vertical, degrees	15.5	14.1	7.3	6.8	6.4	5.6	5.3
Beam Tilt, degrees	0–15	0–15	2–12	2–12	2–12	2–12	2–12
USLS (First Lobe), dB	17	18	13	14	14	16	16
Front-to-Back Ratio at 180°, dB	30	28	27	32	32	29	28
CPR at Boresight, dB	19	19	16	18	17	19	19
CPR at Sector, dB	10	10	10	12	11	7	7
Isolation, Cross Polarization, dB	28	28	28	28	28	28	28
Isolation, Inter-band, dB	30	30	30	30	30	30	30
VSWR Return loss, dB	1.5 14.0	1.5 14.0	1.5 14.0	1.5 14.0	1.5 14.0	1.5 14.0	1.5 14.0
PIM, 3rd Order, 2 x 20 W, dBc	-150	-150	-150	-150	-150	-150	-150
Input Power per Port at 50°C, maximum, watts	250	250	300	300	300	300	300

Electrical Specifications, BASTA

Frequency Band, MHz	790–862	880–960	1710–1880	1850–1990	1920–2180	2300–2500	2500–2690
Gain by all Beam Tilts, average, dBi	13.7	13.7	16.5	17.1	17.2	17.6	17.8
Gain by all Beam Tilts Tolerance, dB	±0.3	±0.3	±0.7	±0.5	±0.5	±0.7	±0.8
Gain by Beam Tilt, average, dBi	0° 13.4 8° 13.8 15° 13.7	0° 13.3 8° 13.9 15° 13.6	2° 16.6 6° 16.6 11° 16.2	2° 17.1 6° 17.2 11° 16.8	2° 17.2 6° 17.4 11° 16.8	2° 17.8 6° 17.9 11° 16.9	2° 17.9 6° 18.1 11° 17.0
Beamwidth, Horizontal Tolerance, degrees	±0.9	±1.9	±4.8	±6.4	±5.9	±5	±4.4
Beamwidth, Vertical Tolerance, degrees	±0.8	±0.8	±0.6	±0.3	±0.5	±0.3	±0.3
USLS, beampeak to 20° above beampeak, dB	20	19	11	13	13	12	12

DGVV65A-FL-4XR

Front-to-Back Total Power at 180° ± 30°, dB	24	22	21	24	24	24	22
CPR at Boresight, dB	19	19	16	18	17	19	19
CPR at Sector, dB	10	10	10	12	11	7	7

Mechanical Specifications

Wind Loading @ Velocity, frontal	206.0 N @ 150 km/h (46.3 lbf @ 150 km/h)
Wind Loading @ Velocity, lateral	170.0 N @ 150 km/h (38.2 lbf @ 150 km/h)
Wind Loading @ Velocity, maximum	397.0 N @ 150 km/h (89.2 lbf @ 150 km/h)
Wind Loading @ Velocity, rear	209.0 N @ 150 km/h (47.0 lbf @ 150 km/h)
Wind Speed, maximum	241 km/h (150 mph)

Packaging and Weights

Width, packed	429 mm 16.89 in
Depth, packed	329 mm 12.953 in
Length, packed	1672 mm 65.827 in
Weight, gross	37 kg 81.571 lb

Regulatory Compliance/Certifications

Agency	Classification
CE	Compliant with the relevant CE product directives
CHINA-ROHS	Above maximum concentration value
ISO 9001:2015	Designed, manufactured and/or distributed under this quality management system
REACH-SVHC	Compliant as per SVHC revision on www.commscope.com/ProductCompliance
ROHS	Compliant/Exempted
UK-ROHS	Compliant/Exempted



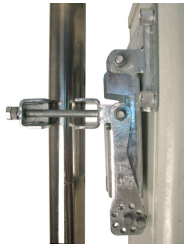
Included Products

BSAMNT-3	–	Wide Profile Antenna Downtilt Mounting Kit for 2.4 - 4.5 in (60 - 115 mm) OD round members. Kit contains one scissor top bracket set and one bottom bracket set.
----------	---	--

* Footnotes

Performance Note	Severe environmental conditions may degrade optimum performance
-------------------------	---

BSAMNT-3



Wide Profile Antenna Downtilt Mounting Kit for 2.4 - 4.5 in (60 - 115 mm) OD round members. Kit contains one scissor top bracket set and one bottom bracket set.

Product Classification

Product Type Downtilt mounting kit

General Specifications

Application Outdoor

Color Silver

Dimensions

Compatible Diameter, maximum 115 mm | 4.528 in

Compatible Diameter, minimum 60 mm | 2.362 in

Weight, net 6.2 kg | 13.669 lb

Material Specifications

Material Type Galvanized steel

Packaging and Weights

Included Brackets | Hardware

Packaging quantity 1

Weight, gross 6.4 kg | 14.11 lb

Regulatory Compliance/Certifications

Agency	Classification
CE	Compliant with the relevant CE product directives
CHINA-ROHS	Below maximum concentration value
ISO 9001:2015	Designed, manufactured and/or distributed under this quality management system
REACH-SVHC	Compliant as per SVHC revision on www.commscope.com/ProductCompliance
ROHS	Compliant
UK-ROHS	Compliant

BSAMNT-3

