

# EGRZZH4T4VV-65D-R8



30-port sector antenna, 2x 694-862 (R1), 2x 880-960 (R2), 2x 694-960 (R3), 4x 1427-2690 (Y4&Y6), 8x 1695-1880 (B1-B4), 8x 2300-2690 (Y1/Y3/Y5/Y7) & 4x 1695-2690 (Y2&Y8) MHz, 65° HPBW, 8x RET.

- All Internal RET actuators are connected in “Cascaded SRET” configuration

## OBSOLETE

This product was discontinued on: November 30, 2023

### Replaced By:

EGRZZH4T4VV-DR10V1 30-port sector antenna, 2x 694-862 (R1), 2x 880-960 (R2), 2x 694-960 (R3), 4x 1427-2690 (Y4/Y6), 8x 1695-1880 (B1-B4), 8x 2300-2690 (Y1/Y3/Y5/Y7) & 4x 1695-2690 (Y2&Y8) MHz, 65° HPBW, 10x RET.

## General Specifications

<b>Antenna Type</b>	Sector
<b>Band</b>	Multiband
<b>Grounding Type</b>	RF connector inner conductor and body grounded to reflector and mounting bracket
<b>Performance Note</b>	Outdoor usage   Wind loading figures are validated by wind tunnel measurements described in white paper WP-112534-EN
<b>Radome Material</b>	Fiberglass, UV resistant
<b>Reflector Material</b>	Aluminum
<b>RF Connector Interface</b>	4.3-10 Female
<b>RF Connector Location</b>	Bottom
<b>RF Connector Quantity, high band</b>	24
<b>RF Connector Quantity, low band</b>	6
<b>RF Connector Quantity, total</b>	30

## Remote Electrical Tilt (RET) Information

<b>RET Hardware</b>	CommRET v1   CommRET v2
<b>RET Interface</b>	8-pin DIN Female   8-pin DIN Male
<b>RET Interface, quantity</b>	1 female   1 male
<b>Input Voltage</b>	10–30 Vdc
<b>Internal RET</b>	High band (5)   Low band (3)

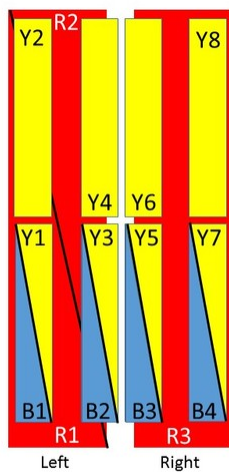
# EGRZZH4T4VV-65D-R8

<b>Power Consumption, idle state, maximum</b>	2 W
<b>Power Consumption, normal conditions, maximum</b>	9 W
<b>Protocol</b>	3GPP/AISG 2.0 (Single RET)

## Dimensions

<b>Width</b>	498 mm   19.606 in
<b>Depth</b>	197 mm   7.756 in
<b>Length</b>	2688 mm   105.827 in
<b>Net Weight, without mounting kit</b>	68.7 kg   151.457 lb

## Array Layout

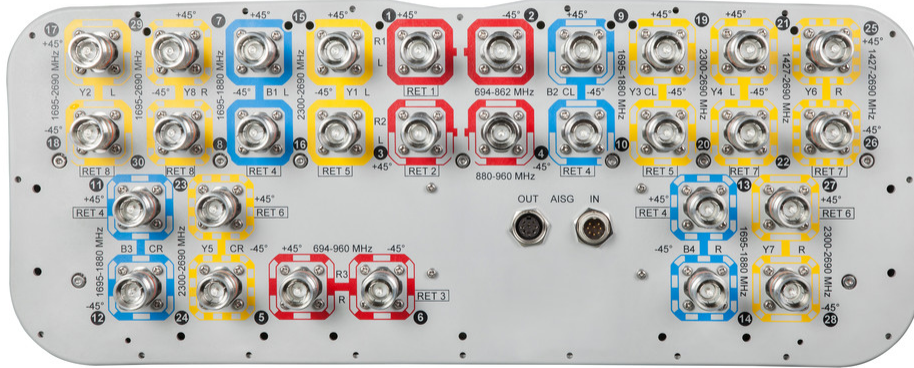


(Sizes of colored boxes are not true depictions of array sizes)

Array	Freq (MHz)	Conns	RET (SRET)	AISG RET UID
R1	694-862	1-2	1	CPxxxxxxxxxxxxxxxxR1
R2	880-960	3-4	2	CPxxxxxxxxxxxxxxxxR2
R3	694-960	5-6	3	CPxxxxxxxxxxxxxxxxR3
B1	1695-1880	7-8	4	CPxxxxxxxxxxxxxxxxB1
B2	1695-1880	9-10		
B3	1695-1880	11-12		
B4	1695-1880	13-14		
Y1	2300-2690	15-16	5	CPxxxxxxxxxxxxxxxxY1
Y3	2300-2690	19-20		
Y5	2300-2690	23-24		
Y7	2300-2690	27-28	6	CPxxxxxxxxxxxxxxxxY5
Y4	1427-2690	21-22		
Y6	1427-2690	25-26	7	CPxxxxxxxxxxxxxxxxY4
Y2	1695-2690	17-18		
Y8	1695-2690	29-30		

## Port Configuration

# EGRZZH4T4VV-65D-R8



## Electrical Specifications

<b>Impedance</b>	50 ohm
<b>Operating Frequency Band</b>	1427 – 2690 MHz   1695 – 1880 MHz   1695 – 2690 MHz   2300 – 2690 MHz   694 – 862 MHz   694 – 960 MHz   880 – 960 MHz
<b>Polarization</b>	±45°
<b>Total Input Power, maximum</b>	900 W @ 50 °C

## Electrical Specifications

	<b>R1/R3</b>	<b>R2/R3</b>	<b>B1-B4</b>	<b>Y1/Y3/Y5/Y7</b>	<b>Y1/Y3/Y5/Y7</b>	<b>Y2/Y4/Y6/Y8</b>	<b>Y2/Y4/Y6/Y8</b>	<b>Y4/Y6</b>
<b>Frequency Band, MHz</b>	<b>694–862</b>	<b>880–960</b>	<b>1695–1880</b>	<b>2300–2400</b>	<b>2490–2690</b>	<b>1695–2180</b>	<b>2490–2690</b>	<b>1427–1518</b>
<b>Gain, dBi</b>	15.8	16	15.4	17.2	17.4	16.9	17.6	14.8
<b>Beamwidth, Horizontal, degrees</b>	68	65	69	58	57	62	55	71
<b>Beamwidth, Vertical, degrees</b>	8.6	7.4	7.3	5.8	5.3	7.1	5.4	9.3
<b>Beam Tilt, degrees</b>	2–14	2–14	2–12	2–12	2–12	2–12	2–12	2–12
<b>USLS (First Lobe), dB</b>	17	20	18	17	18	17	22	18
<b>Front-to-Back Ratio at 180°, dB</b>	32	27	31	31	29	34	31	35
<b>Isolation, Cross Polarization, dB</b>	28	28	25	25	25	25	25	25

# EGRZZH4T4VV-65D-R8

<b>Isolation, Inter-band, dB</b>	28	28	25	25	25	25	25	25
<b>VSWR   Return loss, dB</b>	1.5 14.0	1.5 14.0	1.5 14.0	1.5 14.0	1.5 14.0	1.5 14.0	1.5 14.0	1.5 14.0
<b>PIM, 3rd Order, 2 x 20 W, dBc</b>	-150	-150	-150	-150	-150	-150	-150	-150
<b>Input Power per Port at 50°C, maximum, watts</b>	200	200	200	200	150	200	200	200

## Electrical Specifications, BASTA

<b>Frequency Band, MHz</b>	<b>694–862</b>	<b>880–960</b>	<b>1695–1880</b>	<b>2300–2400</b>	<b>2490–2690</b>	<b>1695–2180</b>	<b>2490–2690</b>	<b>1427–1518</b>
<b>Gain by all Beam Tilts, average, dBi</b>	15.2	15.5	14.9	16.7	16.9	16.1	17.2	14.5
<b>Gain by all Beam Tilts Tolerance, dB</b>	±0.6	±0.7	±0.6	±0.5	±0.8	±1.1	±0.6	±0.4
<b>Gain by Beam Tilt, average, dBi</b>	2° 15.1 8° 15.3 14° 15.0	2° 15.4 8° 15.7 14° 15.2	2° 14.9 7° 15.1 12° 14.5	2° 16.4 7° 16.8 12° 16.8	2° 16.4 7° 17.0 12° 16.8	2° 15.8 7° 16.2 12° 16.0	2° 16.7 7° 17.4 12° 17.2	2° 14.4 7° 14.6 12° 14.5
<b>Beamwidth, Horizontal Tolerance, degrees</b>	±7.5	±4.9	±5.9	±4.5	±5.9	±8.9	±4.4	±7.6
<b>Beamwidth, Vertical Tolerance, degrees</b>	±0.8	±0.4	±0.7	±0.3	±0.2	±1	±0.3	±0.5
<b>USLS, beampeak to 20° above beampeak, dB</b>	14	15	14	13	13	16	15	16
<b>Front-to-Back Total Power at 180° ± 30°, dB</b>	21	22	26	24	23	26	26	26
<b>CPR at Boresight, dB</b>	19	17	18	17	18	19	21	17
<b>CPR at Sector, dB</b>	9	12	8	6	4	6	3	3

## Mechanical Specifications

<b>Mechanical Tilt Range</b>	0°–12°
<b>Wind Loading @ Velocity, frontal</b>	1,070.0 N @ 150 km/h (240.5 lbf @ 150 km/h)
<b>Wind Loading @ Velocity, lateral</b>	375.0 N @ 150 km/h (84.3 lbf @ 150 km/h)
<b>Wind Loading @ Velocity, maximum</b>	1,385.0 N @ 150 km/h (311.4 lbf @ 150 km/h)
<b>Wind Loading @ Velocity, rear</b>	880.0 N @ 150 km/h (197.8 lbf @ 150 km/h)
<b>Wind Speed, maximum</b>	241 km/h (150 mph)

## Packaging and Weights

<b>Width, packed</b>	565 mm   22.244 in
<b>Depth, packed</b>	309 mm   12.165 in
<b>Length, packed</b>	2935 mm   115.551 in

# EGRZZH4T4VV-65D-R8

---

**Weight, gross**

89.7 kg | 197.754 lb

## Regulatory Compliance/Certifications

**Agency**

**Classification**

CHINA-ROHS

Above maximum concentration value

ISO 9001:2015

Designed, manufactured and/or distributed under this quality management system

ROHS

Compliant/Exempted

UK-ROHS

Compliant/Exempted



## Included Products

- |           |   |  |
|-----------|---|--|
| BSAMNT-4  | - | Wide Profile Antenna Downtilt Mounting Kit for 2.4 - 4.5 in (60 - 115 mm) OD round members. Kit contains one scissor top bracket set and one bottom bracket set. |
| BSAMNT-M4 | - | Middle Downtilt Mounting Kit for Long Antennas for 2.4 - 4.5 in (60 - 115 mm) OD round members. Kit contains one scissor bracket set.                            |

## \* Footnotes

**Performance Note**

Severe environmental conditions may degrade optimum performance