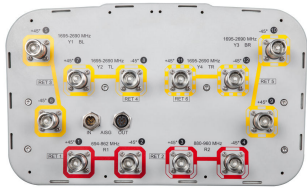


EGV4-65D-R6



12-port multiband antenna, 2x 694–862, 2x 880–960 and 8x 1695–2690 MHz, 65° horizontal beamwidth, 6x Internal RET. Low band arrays are diplexed at the element level.

- All Internal RET actuators are connected in “Cascaded SRET” configuration
- Integrated Internal Remote Electrical Tilt (RET), with independent control of electrical tilt on all arrays
- Uses the 4.3-10 connector which is 40 percent smaller than the 7-16 DIN connector
- Low band array is diplexed for independent tilt
- High band antennas are arranged side-by-side for optimum MIMO 4x4/4x2 performance

General Specifications

Antenna Type	Sector
Band	Multiband
Color	Light Gray (RAL 7035)
Grounding Type	RF connector inner conductor and body grounded to reflector and mounting bracket
Performance Note	Outdoor usage Wind loading figures are validated by wind tunnel measurements described in white paper WP-112534-EN
Radome Material	Fiberglass, UV resistant
Radiator Material	Copper Low loss circuit board
Reflector Material	Aluminum
RF Connector Interface	4.3-10 Female
RF Connector Location	Bottom
RF Connector Quantity, high band	8
RF Connector Quantity, low band	4
RF Connector Quantity, total	12

Remote Electrical Tilt (RET) Information

RET Hardware	CommRET v2
RET Interface	8-pin DIN Female 8-pin DIN Male
RET Interface, quantity	1 female 1 male
Input Voltage	10–30 Vdc
Internal RET	High band (4) Low band (2)

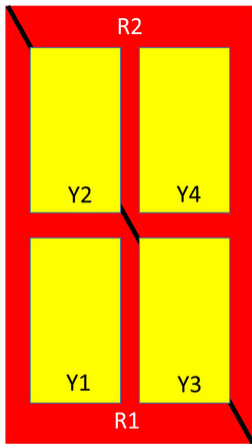
EGV4-65D-R6

Power Consumption, idle state, maximum	1 W
Power Consumption, normal conditions, maximum	8 W
Protocol	3GPP/AISG 2.0 (Single RET)

Dimensions

Width	350 mm 13.78 in
Depth	208 mm 8.189 in
Length	2688 mm 105.827 in
Net Weight, without mounting kit	43.5 kg 95.901 lb

Array Layout



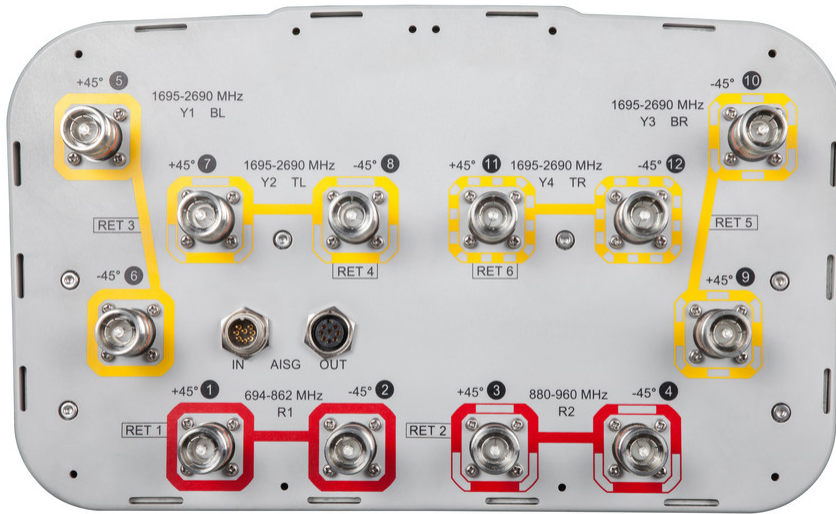
Array	Freq (MHz)	Conns	RET (SRET)	AISG RET UID
R1	694-862	1-2	1	CPxxxxxxxxxxxxxxxxR1
R2	880-960	3-4	2	CPxxxxxxxxxxxxxxxxR2
Y1	1695-2690	5-6	3	CPxxxxxxxxxxxxxxxxY1
Y2	1695-2690	7-8	4	CPxxxxxxxxxxxxxxxxY2
Y3	1695-2690	9-10	5	CPxxxxxxxxxxxxxxxxY3
Y4	1695-2690	11-12	6	CPxxxxxxxxxxxxxxxxY4

Left Right
Bottom

(Sizes of colored boxes are not true depictions of array sizes)

Port Configuration

EGV4-65D-R6



Electrical Specifications

Impedance	50 ohm
Operating Frequency Band	1695 – 2690 MHz 694 – 862 MHz 880 – 960 MHz
Polarization	±45°
Total Input Power, maximum	800 W @ 50 °C

Electrical Specifications

Frequency Band, MHz	694–862	880–960	1695–1920	1920–2180	2300–2500	2500–2690
Gain, dBi	16.7	17	17	17.5	18.3	18.3
Beamwidth, Horizontal, degrees	66	63	63	63	61	61
Beamwidth, Vertical, degrees	8	6.9	7.3	6.5	5.7	5.3
Beam Tilt, degrees	2–12	2–12	2–12	2–12	2–12	2–12
USLS (First Lobe), dB	17	15	14	16	15	15
Front-to-Back Ratio at 180°, dB	33	35	32	35	36	35
Isolation, Cross Polarization, dB	28	28	28	28	28	28
Isolation, Inter-band, dB	30	30	30	30	30	30
VSWR Return loss, dB	1.5 14.0	1.5 14.0	1.5 14.0	1.5 14.0	1.5 14.0	1.5 14.0

EGV4-65D-R6

PIM, 3rd Order, 2 x 20 W, dBc	-150	-150	-150	-150	-150	-150
Input Power per Port, maximum, watts	250	250	300	300	300	250

Electrical Specifications, BASTA

Frequency Band, MHz	694–862	880–960	1695–1920	1920–2180	2300–2500	2500–2690
Gain by all Beam Tilts, average, dBi	16.5	16.8	16.5	17.1	17.8	17.8
Gain by all Beam Tilts Tolerance, dB	±0.3	±0.3	±0.7	±0.5	±0.5	±0.6
Gain by Beam Tilt, average, dBi	2° 16.4 7° 16.6 12° 16.4	2° 16.8 7° 16.9 12° 16.6	2° 16.4 7° 16.6 12° 16.3	2° 16.9 7° 17.2 12° 17.0	2° 17.6 7° 17.9 12° 17.7	2° 17.7 7° 17.9 12° 17.4
Beamwidth, Horizontal Tolerance, degrees	±1.7	±1.9	±3.3	±2.3	±3.2	±3.4
Beamwidth, Vertical Tolerance, degrees	±0.7	±0.4	±0.6	±0.4	±0.3	±0.3
USLS, beampeak to 20° above beampeak, dB	16	15	13	15	13	13
Front-to-Back Total Power at 180° ± 30°, dB	26	24	27	28	28	27
CPR at Boresight, dB	20	21	20	21	23	22
CPR at Sector, dB	10	11	10	11	8	8

Mechanical Specifications

Wind Loading @ Velocity, frontal	477.0 N @ 150 km/h (107.2 lbf @ 150 km/h)
Wind Loading @ Velocity, lateral	409.0 N @ 150 km/h (91.9 lbf @ 150 km/h)
Wind Loading @ Velocity, maximum	1,010.0 N @ 150 km/h (227.1 lbf @ 150 km/h)
Wind Loading @ Velocity, rear	506.0 N @ 150 km/h (113.8 lbf @ 150 km/h)
Wind Speed, maximum	241 km/h (150 mph)

Packaging and Weights

Width, packed	460 mm 18.11 in
Depth, packed	350 mm 13.78 in
Length, packed	2830 mm 111.417 in
Weight, gross	60 kg 132.277 lb

Regulatory Compliance/Certifications

Agency	Classification
---------------	-----------------------

EGV4-65D-R6

CE	Compliant with the relevant CE product directives
CHINA-ROHS	Above maximum concentration value
ISO 9001:2015	Designed, manufactured and/or distributed under this quality management system
ROHS	Compliant/Exempted
UK-ROHS	Compliant/Exempted



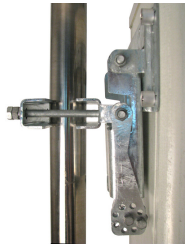
Included Products

BSAMNT-4	-	Wide Profile Antenna Downtilt Mounting Kit for 2.4 - 4.5 in (60 - 115 mm) OD round members. Kit contains one scissor top bracket set and one bottom bracket set.
----------	---	--

* Footnotes

Performance Note	Severe environmental conditions may degrade optimum performance
-------------------------	---

BSAMNT-4



Wide Profile Antenna Downtilt Mounting Kit for 2.4 - 4.5 in (60 - 115 mm) OD round members. Kit contains one scissor top bracket set and one bottom bracket set.

Product Classification

Product Type Downtilt mounting kit

General Specifications

Application Outdoor

Color Silver

Dimensions

Compatible Diameter, maximum 115 mm | 4.528 in

Compatible Diameter, minimum 60 mm | 2.362 in

Weight, net 6.5 kg | 14.33 lb

Material Specifications

Material Type Galvanized steel

Packaging and Weights

Included Brackets | Hardware

Packaging quantity 1

Regulatory Compliance/Certifications

Agency	Classification
CHINA-ROHS	Below maximum concentration value
ISO 9001:2015	Designed, manufactured and/or distributed under this quality management system
REACH-SVHC	Compliant as per SVHC revision on www.commscope.com/ProductCompliance
ROHS	Compliant
UK-ROHS	Compliant

