

F-65C-R1



2-port sector antenna, 2x 617–806 MHz, 65° HPBW, 1x RET, 600MHz-Ready Antenna Technology

OBSOLETE

This product was discontinued on: March 30, 2021

General Specifications

Antenna Type	Sector
Band	Single band
Color	Light Gray (RAL 7035)
Grounding Type	RF connector inner conductor and body grounded to reflector and mounting bracket
Performance Note	Outdoor usage Wind loading figures are validated by wind tunnel measurements described in white paper WP-112534-EN
Radome Material	Fiberglass, UV resistant
Radiator Material	Aluminum Low loss circuit board
RF Connector Interface	4.3-10 Female
RF Connector Location	Bottom
RF Connector Quantity, low band	2
RF Connector Quantity, total	2

Remote Electrical Tilt (RET) Information

RET Interface	8-pin DIN Female 8-pin DIN Male
RET Interface, quantity	1 female 1 male
Input Voltage	10–30 Vdc
Internal RET	Low band (1)
Power Consumption, idle state, maximum	1 W
Power Consumption, normal conditions, maximum	8 W

F-65C-R1

Protocol 3GPP/AISG 2.0 (Single RET)

Dimensions

Width 395 mm | 15.551 in

Depth 228 mm | 8.976 in

Length 2438 mm | 95.984 in

Net Weight, without mounting kit 28 kg | 61.729 lb

Electrical Specifications

Impedance 50 ohm

Operating Frequency Band 617 – 806 MHz

Polarization $\pm 45^\circ$

Total Input Power, maximum 500 W @ 50 °C

Electrical Specifications

Frequency Band, MHz	617–698	698–806
Gain, dBi	15.8	16.4
Beamwidth, Horizontal, degrees	66	60
Beamwidth, Vertical, degrees	10.4	9.3
Beam Tilt, degrees	2–13	2–13
USLS (First Lobe), dB	19	17
Front-to-Back Ratio at 180°, dB	30	27
Isolation, Cross Polarization, dB	30	30
VSWR Return loss, dB	1.5 14.0	1.5 14.0
PIM, 3rd Order, 2 x 20 W, dBc		-153
Input Power per Port at 50°C, maximum, watts	250	250

Electrical Specifications, BASTA

Frequency Band, MHz	617–698	698–806
Gain by all Beam Tilts, average, dBi	15.7	16.1
Gain by all Beam Tilts Tolerance, dB	± 0.2	± 0.4
Gain by Beam Tilt, average, dBi	2° 15.5 7° 15.8 13° 15.6	2° 15.9 7° 16.3 13° 16.0
Beamwidth, Horizontal Tolerance, degrees	± 1.9	± 4.0

F-65C-R1

Beamwidth, Vertical Tolerance, degrees	±0.6	±0.7
USLS, beampeak to 20° above beampeak, dB	17	14
Front-to-Back Total Power at 180° ± 30°, dB	25	22
CPR at Boresight, dB	22	24
CPR at Sector, dB	10	8

Mechanical Specifications

Wind Loading @ Velocity, frontal	510.0 N @ 150 km/h (114.7 lbf @ 150 km/h)
Wind Loading @ Velocity, lateral	374.0 N @ 150 km/h (84.1 lbf @ 150 km/h)
Wind Loading @ Velocity, maximum	872.0 N @ 150 km/h (196.0 lbf @ 150 km/h)
Wind Loading @ Velocity, rear	524.0 N @ 150 km/h (117.8 lbf @ 150 km/h)
Wind Speed, maximum	241 km/h (150 mph)

Packaging and Weights

Width, packed	514 mm 20.236 in
Depth, packed	372 mm 14.646 in
Length, packed	2645 mm 104.134 in
Weight, gross	44.4 kg 97.885 lb

Regulatory Compliance/Certifications

Agency	Classification
CHINA-ROHS	Above maximum concentration value
ISO 9001:2015	Designed, manufactured and/or distributed under this quality management system
ROHS	Compliant/Exempted
UK-ROHS	Compliant/Exempted



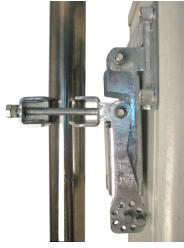
Included Products

- BSAMNT-3 – Wide Profile Antenna Downtilt Mounting Kit for 2.4 - 4.5 in (60 - 115 mm) OD round members. Kit contains one scissor top bracket set and one bottom bracket set.

* Footnotes

Performance Note Severe environmental conditions may degrade optimum performance

BSAMNT-3



Wide Profile Antenna Downtilt Mounting Kit for 2.4 - 4.5 in (60 - 115 mm) OD round members. Kit contains one scissor top bracket set and one bottom bracket set.

Product Classification

Product Type Downtilt mounting kit

General Specifications

Application Outdoor

Color Silver

Dimensions

Compatible Diameter, maximum 115 mm | 4.528 in

Compatible Diameter, minimum 60 mm | 2.362 in

Weight, net 6.2 kg | 13.669 lb

Material Specifications

Material Type Galvanized steel

Packaging and Weights

Included Brackets | Hardware

Packaging quantity 1

Weight, gross 6.4 kg | 14.11 lb

Regulatory Compliance/Certifications

Agency	Classification
CE	Compliant with the relevant CE product directives
CHINA-ROHS	Below maximum concentration value
ISO 9001:2015	Designed, manufactured and/or distributed under this quality management system
REACH-SVHC	Compliant as per SVHC revision on www.commscope.com/ProductCompliance
ROHS	Compliant
UK-ROHS	Compliant

BSAMNT-3

