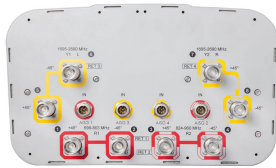


JCVV-65A-R4



8-port sector antenna, 2x 698–803, 2x 824–960 and 4x 1695–2690 MHz, 65° HPBW, 4x IntRET.

- Uses the 4.3-10 connector which is 40 percent smaller than the 7-16 DIN connector

OBSOLETE

This product was discontinued on: **March 30, 2024**

General Specifications

Antenna Type	Sector
Band	Multiband
Grounding Type	RF connector inner conductor and body grounded to reflector and mounting bracket
Performance Note	Outdoor usage Wind loading figures are validated by wind tunnel measurements described in white paper WP-112534-EN
Radome Material	Fiberglass, UV resistant
Reflector Material	Aluminum
RF Connector Interface	4.3-10 Female
RF Connector Location	Bottom
RF Connector Quantity, high band	4
RF Connector Quantity, low band	4
RF Connector Quantity, total	8

Remote Electrical Tilt (RET) Information

RET Interface	8-pin DIN Male
RET Interface, quantity	4 male
Input Voltage	10–30 Vdc
Internal RET	High band (2) Low band (2)
Power Consumption, idle state, maximum	1 W
Power Consumption, normal conditions, maximum	10 W

JCVV-65A-R4

Protocol 3GPP/AISG 2.0 (Single RET)

Dimensions

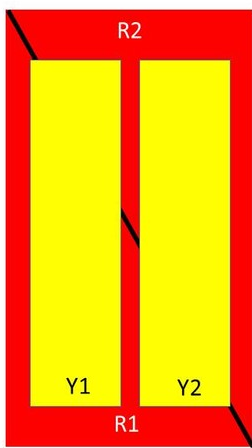
Width 350 mm | 13.78 in

Depth 208 mm | 8.189 in

Length 1400 mm | 55.118 in

Net Weight, without mounting kit 24.3 kg | 53.572 lb

Array Layout



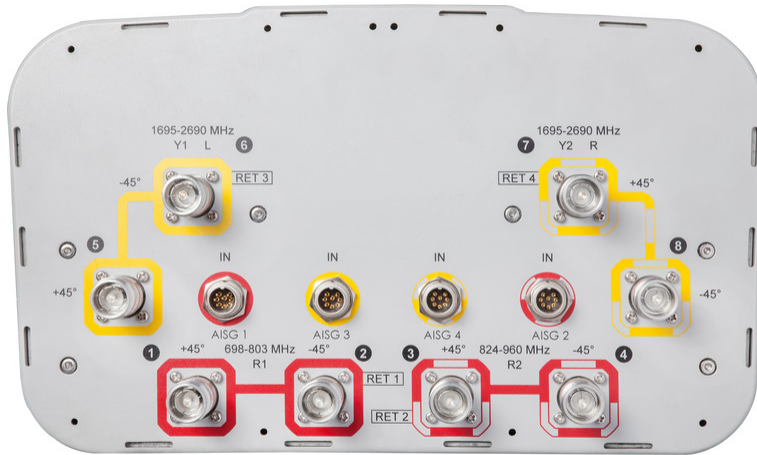
Array	Freq (MHz)	Conns	RET (SRET)	AISG RET UID
R1	698-803	1-2	1	ANxxxxxxxxxxxxxxxxx1
R2	824-960	3-4	2	ANxxxxxxxxxxxxxxxxx2
Y1	1695-2690	5-6	3	ANxxxxxxxxxxxxxxxxx3
Y2	1695-2690	7-8	4	ANxxxxxxxxxxxxxxxxx4

Left Right
Bottom

(Sizes of colored boxes are not true depictions of array sizes)

Port Configuration

JCVV-65A-R4



Electrical Specifications

Impedance	50 ohm
Operating Frequency Band	1695 – 2690 MHz 698 – 803 MHz 824 – 960 MHz
Polarization	±45°
Total Input Power, maximum	800 W @ 50 °C

Electrical Specifications

Frequency Band, MHz	698–803	824–896	880–960	1695–1880	1850–1990	1920–2180	2300–2690
Gain, dBi	13.6	14	14.2	17.3	17.6	17.9	18.3
Beamwidth, Horizontal, degrees	68	65	63	61	60	61	59
Beamwidth, Vertical, degrees	17.1	14.9	13.7	7.3	7	6.6	5.6
Beam Tilt, degrees	2–18	2–18	2–18	2–12	2–12	2–12	2–12
USLS (First Lobe), dB	19	21	18	15	16	16	17
Front-to-Back Ratio at 180°, dB	30	31	30	33	39	39	35
Isolation, Cross Polarization, dB	28	28	28	28	28	28	28
Isolation, Inter-band, dB	30	30	30	30	30	30	30
VSWR Return loss, dB	1.5 14.0	1.5 14.0	1.5 14.0	1.5 14.0	1.5 14.0	1.5 14.0	1.5 14.0

JCVV-65A-R4

PIM, 3rd Order, 2 x 20 W, dBc	-150	-150	-150	-150	-150	-150	-150
Input Power per Port at 50°C, maximum, watts	300	300	300	250	250	250	200

Electrical Specifications, BASTA

Frequency Band, MHz	698–803	824–896	880–960	1695–1880	1850–1990	1920–2180	2300–2690
Gain by all Beam Tilts, average, dBi	13.3	13.8	14	16.8	17.4	17.6	17.9
Gain by all Beam Tilts Tolerance, dB	±0.4	±0.4	±0.4	±0.7	±0.3	±0.5	±0.5
Gain by Beam Tilt, average, dBi	2° 12.9 10° 13.4 18° 13.2	2° 13.4 10° 14.0 18° 13.7	2° 13.5 10° 14.2 18° 13.8	2° 16.8 7° 17.0 12° 16.8	2° 17.3 7° 17.5 12° 17.2	2° 17.3 7° 17.7 12° 17.5	2° 17.6 7° 18.0 12° 17.6
Beamwidth, Horizontal Tolerance, degrees	±1.9	±1.6	±1.4	±4.9	±3.4	±4.2	±3.9
Beamwidth, Vertical Tolerance, degrees	±1.4	±0.6	±0.9	±0.5	±0.3	±0.5	±0.4
USLS, beampeak to 20° above beampeak, dB	19	22	18	15	15	15	14
Front-to-Back Total Power at 180° ± 30°, dB	24	24	22	26	31	28	26
CPR at Boresight, dB	15	15	17	18	21	21	16
CPR at Sector, dB	10	9	7	12	12	11	7

Mechanical Specifications

Wind Loading @ Velocity, frontal	221.0 N @ 150 km/h (49.7 lbf @ 150 km/h)
Wind Loading @ Velocity, lateral	185.0 N @ 150 km/h (41.6 lbf @ 150 km/h)
Wind Loading @ Velocity, maximum	469.0 N @ 150 km/h (105.4 lbf @ 150 km/h)
Wind Loading @ Velocity, rear	234.0 N @ 150 km/h (52.6 lbf @ 150 km/h)
Wind Speed, maximum	241 km/h (150 mph)

Packaging and Weights

Width, packed	477 mm 18.78 in
Depth, packed	354 mm 13.937 in
Length, packed	1544 mm 60.787 in
Weight, gross	36.7 kg 80.91 lb

Regulatory Compliance/Certifications

Agency	Classification
---------------	-----------------------

JCVV-65A-R4

CHINA-ROHS	Above maximum concentration value
ISO 9001:2015	Designed, manufactured and/or distributed under this quality management system
ROHS	Compliant/Exempted
UK-ROHS	Compliant/Exempted



Included Products

- BSAMNT-3 – Wide Profile Antenna Downtilt Mounting Kit for 2.4 - 4.5 in (60 - 115 mm) OD round members. Kit contains one scissor top bracket set and one bottom bracket set.

* Footnotes

Performance Note Severe environmental conditions may degrade optimum performance

BSAMNT-3



Wide Profile Antenna Downtilt Mounting Kit for 2.4 - 4.5 in (60 - 115 mm) OD round members. Kit contains one scissor top bracket set and one bottom bracket set.

Product Classification

Product Type Downtilt mounting kit

General Specifications

Application Outdoor

Color Silver

Dimensions

Compatible Diameter, maximum 115 mm | 4.528 in

Compatible Diameter, minimum 60 mm | 2.362 in

Weight, net 6.2 kg | 13.669 lb

Material Specifications

Material Type Galvanized steel

Packaging and Weights

Included Brackets | Hardware

Packaging quantity 1

Weight, gross 6.4 kg | 14.11 lb

Regulatory Compliance/Certifications

Agency	Classification
CE	Compliant with the relevant CE product directives
CHINA-ROHS	Below maximum concentration value
ISO 9001:2015	Designed, manufactured and/or distributed under this quality management system
REACH-SVHC	Compliant as per SVHC revision on www.commscope.com/ProductCompliance
ROHS	Compliant
UK-ROHS	Compliant

